

# FESCOLO



## FESCOLO

Fescolo Pneumatic Co.,Ltd.

Sales Manager: Jeffrey Bu

Postal code: 315100

Tel.: +86 574 89258005

Cell phone.: +86 0 15057491870

Email: sales@fescolo.com

Web.: www.fescolo.com

Add.: #98 Tiangao Lane, Yinzhou, Ningbo, Zhejiang, China



Fescolo Pneumatic Co.,Ltd.

# Company Profile

Fescolo pneumatic Co., Ltd. , found in 2001, which specializes in pneumatic products such as air cylinders, solenoid valves, pneumatic control valves, filter regulators, air hose, fittings and so on. We have an excellent technical research department, first-class production technology and equipments. All our workshops are in accordance with 6S principles. At present, we have 18 production lines, more than 2,000 production equipments, annual turnover of more than 20 million US dollars.

Until now, our customers are more than 80 countries around the world. Our major products include air cylinders, solenoid valves, pneumatic control valves, filter regulators, air hoses and fittings. The applications involve industrial automation, medical treatment, sanitary ware, automobile manufacturing, wire and cable, horticulture and agricultural irrigation etc. Furthermore, we accept ODM and OEM customization services, and can design logo and label for our customers.

Our chief technical engineer, Antonio Bonifazi from Italy, had worked as a technical engineer in Aigiro Group and NSG Group for many years. He has fruitful experience and unique technology in mechanical automation industry. Each product from Fescolo will go through 3 inspections at least before shipping, in order to guarantee every product you receive is perfect. The raw materials we use are the best and latest, never recycled or old materials. Basically, all our molds are developed and designed by ourselves, which ensures the stability of product quality. At present, 70% workshops realize automatic production, which greatly increases the production capacity. Compared with last year, the annual production capacity has increased by more than 50%. In addition, there are a large number of workblanks and semi-finished products available in stock. From order confirmation to delivery, usually it takes only 3~10 working days. We have stable freight forwarders by sea, air and train, so that we can deliver the goods to our customers with the best price and service.

Most of our products includes a one-year or 6-month warranty. Many replacement parts are available in stocked they can be shipped within 3days. Our technical sales team experienced and reliable can provide best services from pre-sales to after-sale, as well as technical support and consultancy. We are on a mission to create a green and healthy production environment for our employees, to provide our customers with professional and efficient services, energy-saving and stable quality products.

Warmly welcome and opening up the boundaries of our communication. Sincerely, we are looking forward to your cooperation in the near future. FESCOLO, your trusted partner forever.



# CONTENTS

- ZFB series Vacuum Filter ----- 05
- VFR Vacuum Filter ----- 05
- ZFC100 series Mini type vacuum filter ----- 06
- VFC series Mini type vacuum filter ----- 07
- ZFC5/7 series Mini type vacuum filter ----- 08
- ZU series Straight type vacuum generator ----- 09
- EV series vacuum generator ----- 10
- ZH series vacuum generator ----- 11
- Cassette type(Muffler inside)Dimension(mm) ----- 12
- BM series vacuum generator ----- 13
- BX series vacuum generator ----- 14
- KS series high speed rotary joint ----- 15
- VHK series 2/3ways hand valve ----- 16
- AKH series check valve ----- 18
- KC series self-styled fitting ----- 19
- KC series self-styled fitting ----- 20
- QDS series pneumatic lock Pneumatically control check valve ----- 20
- AQ240F/340F series Quick exhaust valve ----- 21
- ASN2 series throttle valve(with air muffler) ----- 21
- AS series speed controller ----- 22
- ASV series exhaust type speed controller ----- 26
- KQ2 ( KJ )series white push-in tube fittings ----- 27
- KJ series mini type push-in fittings ----- 28
- KQ2 series push-in tube fittings ----- 31
- KQ-U series Universal thread fitting ----- 41
- KQ series black push-in tube fittings ----- 42
- M series micro fittings ----- 43
- KG series corrosion-resistant fittings ----- 44
- Full copper series (thickened) shoe machine ----- 45



**Ordering cautions for push-in fittings, speed controllers, vacuum generators and filters.**

- 1.The selection of fittings should be demonstrated or verified to avoid danger.
- 2.The tolerance of O.D. of applicable tube should be within ±0.10mm
- 3.The insertion end of the tubing should be cut flatly and smoothly along the vertical section with special equipment. When pulled out and reused, the damaged part should be removed, and the tubing should be smooth and free of deformation and foreign objects to ensure the seal.
- 4.When the tubing is inserted, make sure that it is in place. The exposed part of the tubing should be parallel with the fitting as much as possible to avoid any leakage caused by the hard bending of the tubing.
- 5.The thread should be tightened by a wrench on the metal hexagon of the fitting. The rotation of the plastic housing is only for the adjustment of the direction of the tubing.
6. Imperial threads are with pre-coating sealant, but when the thread is too large, it can be sealed with Teflon tape, especially for the second-hand fittings.
- 7.The end face of metric thread should be sealed with a gasket or rubber O ring.

**Working condition**

Max.operating pressure	1.0MPa
Min.operating pressure	0.1MPa
Ambient and liquid temp.	-5~60°C(not freezing)
Adjustable circle(AS series)	About 10circle(M3,M5&1001F about 8circle)
Applicable tubing material	Nylon hose, PU hose, PVC hose

**New utility patent for full series push-in tube fittings**

Name: A kind of tube fittings with a locking clamping jaw.

Patent No.: ZL 2013 2 0430578.1

**Summary:**

The new utility patent discloses a type of pneumatic fittings with a locking clamping jaw structure, which includes body, base, sealing gasket, release button, metal bushing, cone locking bushing, jaw body and so on. The clamping jaw includes Jaw body, sleeve, Jaw teeth etc. A plurality of claw teeth are arranged toward the axis of the ring body, and claw teeth sleeves are provided between the two adjacent claw teeth. The sleeve on the clamping jaw facilitates the setting of the claw teeth toward the axis of the ring body, which is easy to be disengaged from the ring, so that the clamping jaw has a greater tightening force: the clamping jaw is cylindrical to ensure that it can be firmly set inside the connector body.

**Other instructions:**

- 1.Please specify the model when ordering. e.g. : KQ2H08-02S;
- 2.For nonstandard thread, please specify its outer diameter and pitch.
- 3.Applicable Tube for KJ series includes Φ3, Φ3.2, Φ4, Φ6 only;  
For KQ series, includes Φ4, Φ6, Φ8, Φ10, Φ12, Φ16.
- 4.For AS series, the outer housing and the needle valve are made of brass with nickel plated, and the inner sleeve is copper natural passivation. Please specify when nickel plating is required
- 5.The dimensions marked in this catalogue are for reference only, the actual size shall be confirmed with us when selecting.
- 6.The applicable Tube marked in the data sheet means the outer diameter of the tubing.

**Appropriate torque for connecting thread**

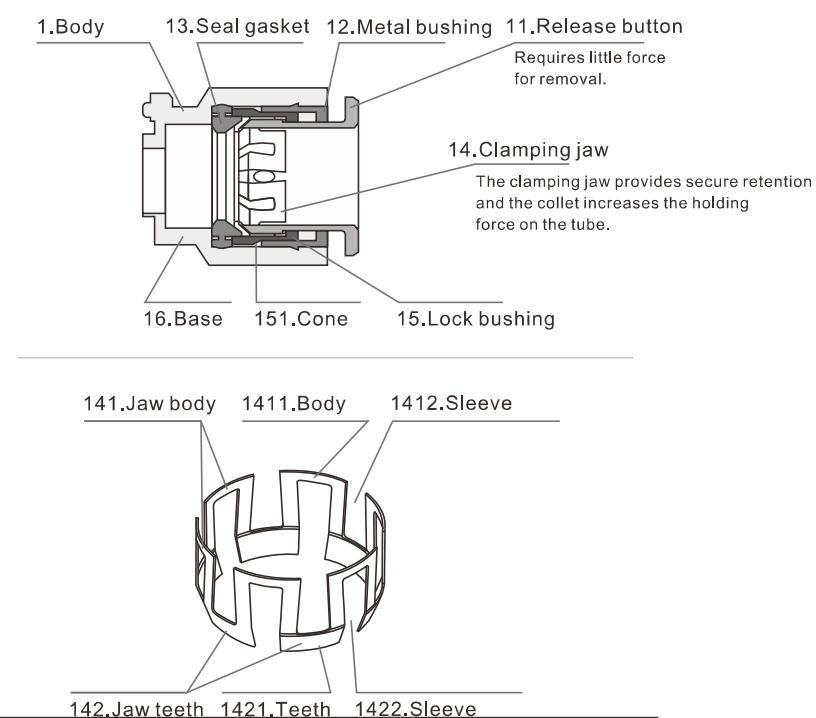
Thread	Appropriate torque N.M(kgf.cm)	Thread	Appropriate torque N.M(kgf.cm)
M3	0.3-0.5(3-5)	1/4"	12-14(120-140)
M5	1.5-2(15-20)	3/8"	22-24(220-240)
1/8"	7-9(70-90)	1/2"	28.30(280-300)

Cautions: Excessive screwing to the thread may cause thread breaking or leakage from gasket deformation.

For face seal type(sealed with O ring or gasket), 1/6~1/4 of a rotation for tool-tightening after hand-tightening.

For sealant type, 2~3 rotations for tool-tightening after hand-tightening

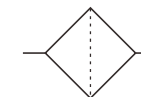
**Structure**



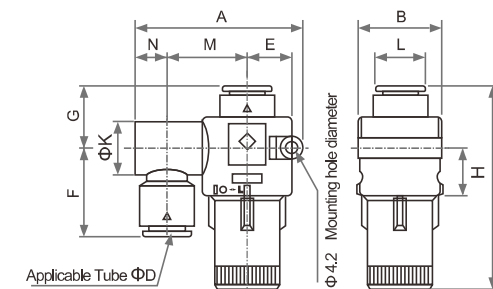
**ZFB series Vacuum Filter**



**Graphic symbol**



**Dimension(mm)**



**Specification**

Model	ZFB100-04	ZFB100-06	ZFB200-06	ZFB200-08	ZFB300-08	ZFB300-10
O.D. of tube	Φ4	Φ6	Φ6	Φ8	Φ8	Φ10
Flow/min(ANR)	10	20	30	50	75	75
Working medium	Air, Nitrogen					
Press.difference	0.5MPa					
Working pressure	-100~0kPa					
Ambient temp.	5~60°C					
Filtration rating	30 μm					

**Ordering Code:**

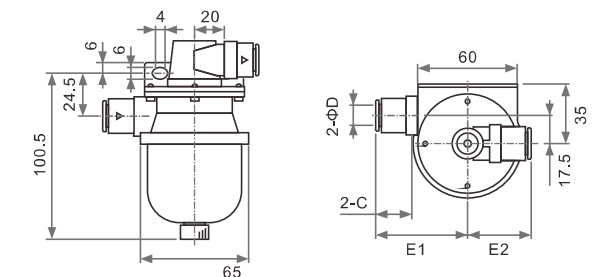
ZFB	100	04	Tube size
			Size O.D. Used for
			04 Φ4 ZFB100
			06 Φ6 ZFB100 ZFB200
			08 Φ8 ZFB200 ZFB300
			10 Φ10 ZFB300

Model	A	B	C	E	F	G	H	J	K	L	N	M	ΦD
ZFB100-04	48	26	53	12.5	24	17.5	15	15.5	14.4	12.8	8.5	22.5	Φ4
ZFB100-06			54										Φ6
ZFB200-06	52	28	65	13.5	27	19.5	16	17.5	16.6	15.2	9.5	24.5	Φ6
ZFB200-08													Φ8
ZFB300-08	57	30	69.5	14.5	29.5	21	17	21.5	18	18.5	11	27	Φ8
ZFB300-10			70										Φ10

**VFR Vacuum Filter**



**Dimension(mm)**



Model	TubeΦD	C	E1	E2	Filtered Area(cm2)	Weight(g)
VFR20-6-6	Φ6	17	48	38		232
VFR20-8-8	Φ8	18.5	48	38		230.5
VFR20-10-10	Φ10	21	48.5	38.5	20	224.5
VFR20-12-12	Φ12	23.5	48	38		217
VFR20-16-16	Φ16	25	55.5	43.5		240

### ZFC100 series Mini type vacuum filter

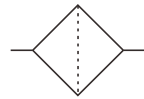


Patent No.:  
ZL 2013 3 0338590.5

#### Specification

Model	ZFC050-04B	ZFC100-04B	ZFC100-06B	ZFC200-06B	ZFC200-08B	ZFC200-10B	ZFC300-12B
O.D. of tube	Φ4	Φ4	Φ6	Φ6	Φ8	Φ10	Φ12
Flow/min(ANR)	08	10	20	30	50	80	100
Working medium	Air, Nitrogen						
Working pressure	-100~0kpa						
Filtration rating	1μm						
Ambient temp.	0~60°C(not frozen)						
Press.difference	0.15MPa						
Applicable hose	Nylon hose, PU hose, PVC hose						
Filter element	I-60S	I-62S	I-63S		I-64S		

#### Graphic symbol



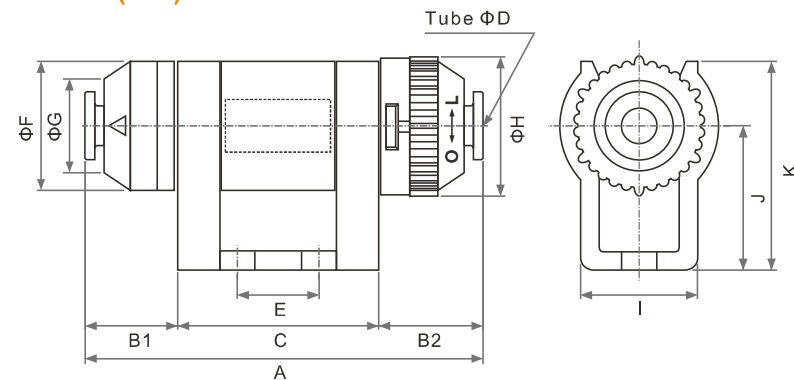
#### Characteristics

1. Small size and light weight
2. Easy to connect with push in tube fitting
3. Replaceable filter element
4. Easy to replace the element
5. Inlet and outlet in one line
6. Standard type with bracket

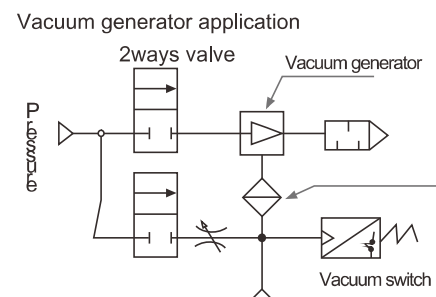
#### Ordering Code:

ZFC		100	04	B
		Recommended flow rate	Tube size	With bracket
50	Max.8L/min(ANR)			
100	Max.20L/min(ANR)			
200	Max.80L/min(ANR)			
300	Max.100L/min(ANR)			
Size	Tube	Used for		
04	Φ4	ZFB50		
		ZFB100		
06	Φ6	ZFB100		
		ZFB200		
08	Φ8	ZFB200		
10	Φ10	ZFB200		
12	Φ12	ZFB300		

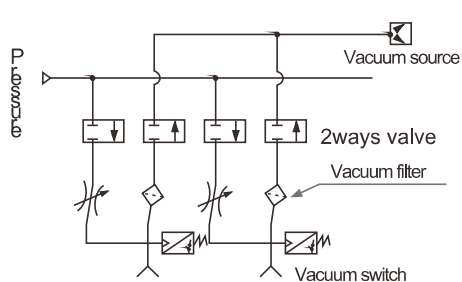
#### Dimension(mm)



#### Standard stroke



#### Vacuum pump application



Model	A	B1	C	B2	E	F	G	H	I	J	K	ΦD
ZFC050-04B	57	10.2	35	11.8	24.6	9.8	9.8	9.8	14.8	9.6	14.6	Φ4
ZFC100-04B	53.2	91	30	14.1	10	18	11.6	19.5	23	20	29	Φ4
ZFC100-06B	53.2	91	30	14.1	10	18	11.6	19.5	23	20	29	Φ6
ZFC200-06B	67	15.5	34	17.5	14	22	15.6	23.1	27	24	35	Φ6
ZFC200-08B	67	15.5	34	17.5	15	22	15.6	23.1	27	24	35	Φ8
ZFC200-10B	74.4	14.55	43.5	16.35	26.1	22	18.45	23.4	27	23	34	Φ10
ZFC300-12B	89.65	20.23	48.1	21.32	30.1	25.81	19	25.81	31.9	28	41	Φ12

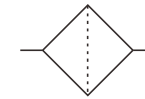
### VFC series Mini type vacuum filter



#### Specification

Model	VFC050-04B	VFC100-04B	VFC100-06B	VFC200-06B	VFC200-08B	VFC200-10B
O.D. of tube	Φ4	Φ4	Φ6	Φ6	Φ8	Φ10
Flow/min(ANR)	08	10	20	30	50	80
Working medium	Air, Nitrogen					
Working pressure	0~1MPa					
Filtration rating	1μm					
Ambient temp.	0~60°C(not frozen)					
Press.difference	0.15MPa					
	Nylon hose, PU hose, PVC hose					
Filter element	I-60S	I-62S	I-63S		I-64S	

#### Graphic symbol



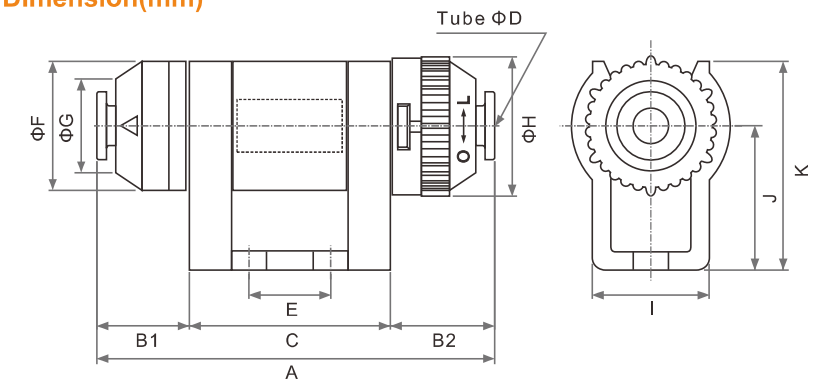
#### Characteristics

1. Small size and light weight
2. Easy to connect with push in tube fitting
3. Replaceable filter element
4. Easy to replace the element
5. Inlet and outlet in one line
6. Standard type with bracket

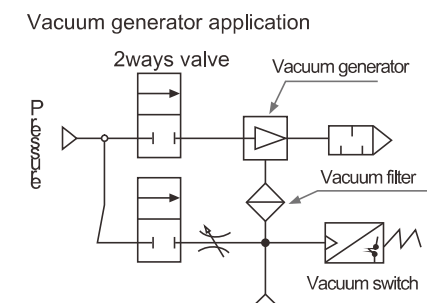
#### Ordering Code:

VFC		100	04	B
		Recommended flow rate	Tube size	With black bracket
50	Max.8L/min(ANR)			
100	Max.20L/min(ANR)			
200	Max.80L/min(ANR)			
Size	Tube	Used for		
04	Φ4	VFC50		
		VFC100		
06	Φ6	VFC100		
		VFC200		
08	Φ8	VFC200		
10	Φ10	VFC200		

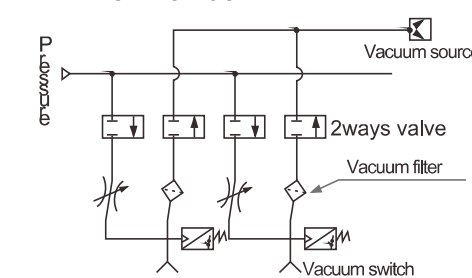
#### Dimension(mm)



#### Standard stroke



#### Vacuum pump application



Model	A	B1	C	B2	E	F	G	H	I	J	K	ΦD
VFC050-04B	57	10.2	35	11.8	24.6	9.8	9.8	9.8	14.8	9.6	14.6	Φ4
VFC100-04B	53.2	91	30	14.1	10	18	11.6	19.5	23	20	29	Φ4
VFC100-06B	53.2	91	30	14.1	10	18	11.6	19.5	23	20	29	Φ6
VFC200-06B	67	15.5	34	17.5	14	22	15.6	23.1	27	24	35	Φ6
VFC200-08B	67	15.5	34	17.5	15	22	15.6	23.1	27	24	35	Φ8
VFC200-10B	74.4	14.55	43.5	16.35	26.1	22	18.45	23.4	27	23	34	Φ10



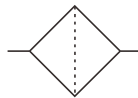
ZFC5/7 series  
Mini type vacuum filter



Specification

Model	ZFC53B	ZFC54B	ZFC74B	ZFC75B	ZFC76B	ZFC77B
O.D. of tube	Φ4	Φ6	Φ6	Φ8	Φ10	Φ12
F (Pressure) L/min	45	100	120	250	300	350
W (Vacuum) L/min	10	20	30	70	80	100
Working medium	Air, Nitrogen					
Working pressure	-100kPa~1MPa					
Filtration rating	5μm					
Ambient temp.	0~60°C(not frozen)					
Press.difference	0.1MPa(Vacuum 20kPa)					
Application	Nylon hose, PU hose, PVC hose					

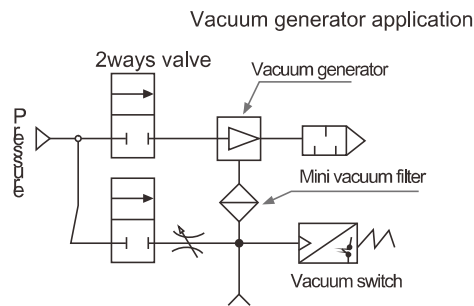
Graphic symbol



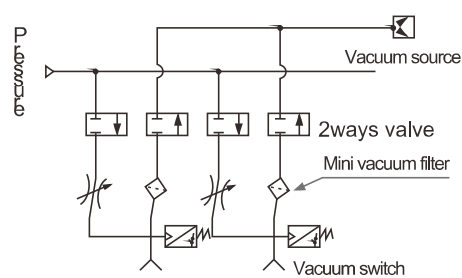
Characteristics

- Used for both pressure and vacuum
- Easy to connect with push in tube fitting
- Replaceable filter element
- Rotation-proof structure against loosening
- Inlet and outlet in one line
- Standard type with bracket

Standard stroke



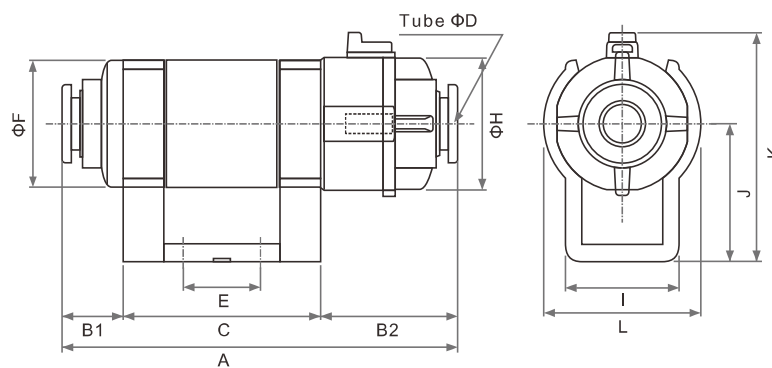
Vacuum pump application



Ordering Code:

ZFC	5	04	B		
	Body size	Tube size	With bracket		
Size	Max.flow rate	Filter area	Size	Tube	Used for
5	20L/min(ANR)	750mm <sup>2</sup>	3	Φ4	Zf5
7	100L/min(ANR)	1260mm <sup>2</sup>	4	Φ6	ZF5/7
			5	Φ8	Zf7
			6	Φ10	Zf7
			7	Φ12	Zf7

Dimension(mm)



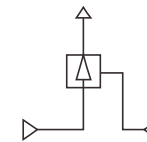
Model	A	B1	C	B2	E	F	H	I	L	J	K	ΦD
ZFC53B	53.9	18	30	5.9	10	18	19	18	23	20	33.4	Φ4
ZFC54B	53.9	18	30	5.9	10	18	19	18	23	20	33.4	Φ6
ZFC74B	68.4	11.5	34	22.9	14	22.6	23.6	20	27.3	24	39.8	Φ6
ZFC75B	68.4	11.5	34	22.9	14	22.6	23.6	20	27.3	24	39.8	Φ8
ZFC76B	79.7	29	34	16.7	14	22.6	23.6	20	27.3	24	39.8	Φ10
ZFC77B	79.7	29	34	16.7	14	22.6	23.6	20	27.3	24	39.8	Φ12

ZU series  
Straight type vacuum generator

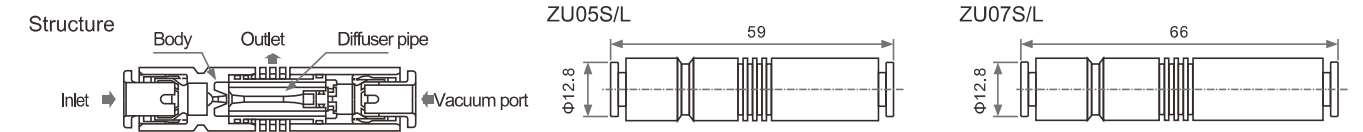


Patent No.  
ZL 2013 3 0338584.X

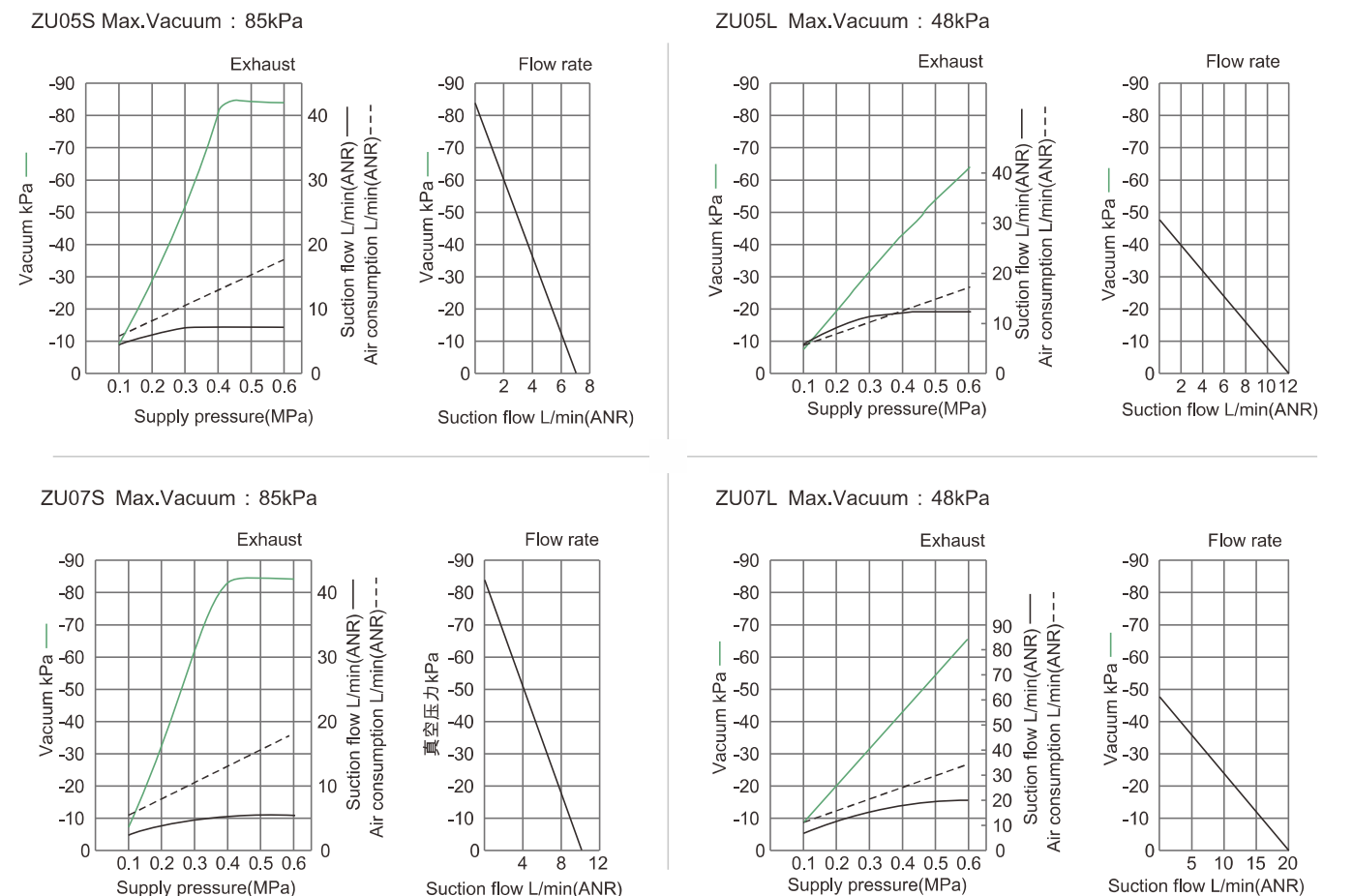
Graphic symbol



Dimension(mm)



Exhaust characteristic/Flow characteristic diagram



**EV series**  
vacuum generator



**Specification**

Model	EV-05	EV-10	EV-15	EV-20	EV-25	EV-30
Working medium	Air					
Ambient temperature	0-60					
Lubrication	Needless					
Supply pressure(Mpa)	0.1~1.6[1.0~6.0Kg/cm <sup>2</sup> ]					
Nozzle dia.(mm)	Φ0.5	Φ1.0	Φ1.5	Φ2.0	Φ2.5	Φ3.0
Vacuum degree	-91.8Kpa[-690mmHg]					

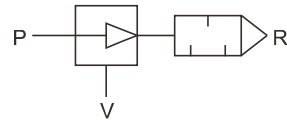
**Vacuum performance**

Model	Nozzle dia. (Φmm)	Vacuum deg.	Max.Suction (L/min)	Air consumption (L/min)	Supply pressure -Mpa[Kg/cm <sup>2</sup> ]
EV-05	0.5	86.7[650]	6	13	0.5[5]
EV-10	1.0	91.8[690]	27	44	0.5[5]
EV-15	1.5	91.8[690]	62	100	0.5[5]
EV-20	2.0	91.8[690]	105	180	0.5[5]
EV-25	2.5	91.8[690]	150	270	0.5[5]
EV-30	3.0	91.8[690]	220	390	0.5[5]

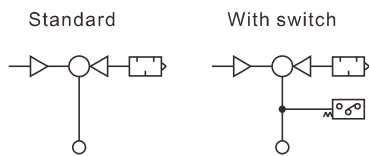
  

Model	Nozzle dia. (Φmm)	Inlet thread (BSPP)	Vacuum port (BSPP)	Exhaust thread (BSPP)	Air muffler model
EV-05	0.5	1/8"	1/8"	1/8"	AN100-01
EV-10	1.0	1/8"	1/8"	1/8"	AN100-01
EV-15	1.5	1/4"	1/4"	1/4"	AN200-02
EV-20	2.0	1/4"	3/8"	3/8"	AN300-03
EV-25	2.5	3/8"	1/2"	3/4"	AN400-06
EV-30	3.0	1/2"	3/4"	3/4"	AN400-06

**Graphic symbol**



**Vacuum generator application**



**Ordering Code:**

EV **10** - **S** **K**

Nozzle dia.

05	05mm
10	10mm
15	15mm
20	20mm
25	25mm
30	30mm

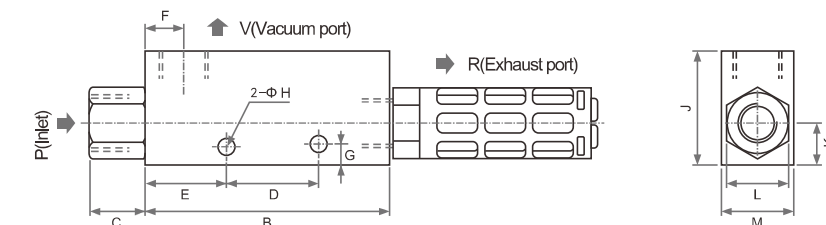
Adjustable

blank	Standard
K	Adjustable

Microswitch

blank	Standard
S	With microswitch

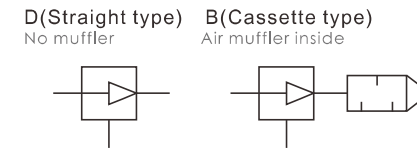
**Dimension(mm)**



Model	B	C	D	E	F	G	H	J	K	L	M	P (BSPP)	V (BSPP)	R (BSPP)
EV-05	45	10	20	14	8	4.5	4.2	33	10	14	16	1/8"	1/8"	1/8"
EV-10	45	10	20	14	8	4.5	4.2	33	10	14	16	1/8"	1/8"	1/8"
EV-15	63	15	25	20	10	5	4.5	35	11	17	20	1/4"	1/4"	1/4"
EV-20	85	20	32	28	13	7	6	40	15	22	30	1/4"	3/8"	3/8"
EV-25	100	17	50	20	16	5.5	6	60	20	28	40	3/8"	1/2"	3/4"
EV-30	118	20	50	33	20	5.5	6	60	20	30	40	1/2"	3/4"	3/4"

**ZH series**  
vacuum generator

**Graphic symbol**



**Connecting type**

Body type	SUP	VAC	EXH
Cassette type (Muffler inside)	① Push in fitting	Push in fitting	—
	② Push in fitting	Thread	—
	③ Thread	Thread	—
Straight type (No muffler)	① Push in fitting	Push in fitting	Push in fitting
	② Push in fitting	Thread	Push in fitting
	③ Thread	Thread	Thread

**Connecting port**

Model	(Push in fitting/thread)		
	SUP	VAC	EXH
ZH05B □	Φ6/Rc1/8"	Φ6/Rc1/8"	—
ZH07B □	Φ6/Rc1/8"	Φ6/Rc1/8"	—
ZH10B □	Φ6/Rc1/8"	Φ6/Rc1/8"	—
ZH13B □	Φ8/Rc1/8"	Φ10/Rc1/4"	—
ZH05D □	Φ6/Rc1/8"	Φ6/Rc1/8"	Φ6/Rc1/8"
ZH07D □	Φ6/Rc1/8"	Φ6/Rc1/8"	Φ6/Rc1/8"
ZH10D □	Φ6/Rc1/8"	Φ6/Rc1/8"	Φ8/Rc1/8"
ZH13D □	Φ8/Rc1/8"	Φ10/Rc1/4"	Φ10/Rc1/4"
ZH15D □	Φ10/Rc1/4"	Φ12/Rc3/8"	Φ12/Rc3/8"
ZH18D □	Φ12/Rc3/8"	Φ12/Rc3/8"	Φ12/Rc3/8"
ZH20D □	Φ12/Rc3/8"	Φ16/Rc1/2"	Φ6/Rc1/2"

**Cassette type(air muffler inside)Dimension(mm)**

Connect with push in tube fitting



Patent No.: ZL 2013 3 0338589.2

**Ordering Code:**

ZH **07** B **S** - **06** - **06**

ZH **07** D **S** - **06** - **06** - **06**

Nozzle Dia. Max.vacuum VAC.□ EXH.□

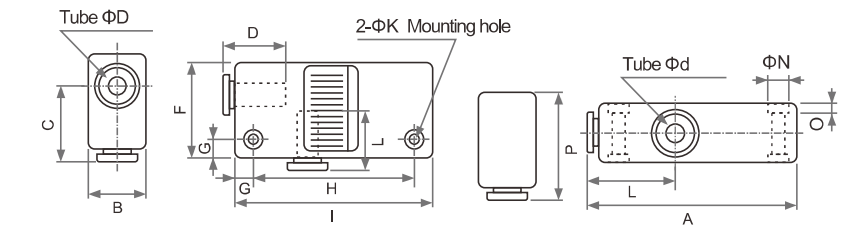
Size	Tube	Type
05	0.5mm	B Cassette S +88kpa
07	0.7mm	D Straight type L +48kpa
10	1.0mm	
13	1.3mm	
15	1.5mm	
18	1.8mm	
20	2.0mm	

Size	Tube	Type
06	Φ6	Push in fitting
10	Φ10	Push in fitting
12	Φ12	Push in fitting
16	Φ16	Push in fitting
01	Rc1/8"	Female thread
02	Rc1/4"	Female thread
03	Rc3/8"	Female thread
04	Rc1/2"	Female thread

Size	Tube	Type
06	Φ6	Push in fitting
08	Φ8	Push in fitting
10	Φ10	Push in fitting
12	Φ12	Push in fitting
01	Rc1/8"	Female thread
02	Rc1/4"	Female thread
03	Rc3/8"	Female thread

**Specification**

Model	Nozzle Dia. Φmm	Body type	Max.vacuum deg. KPa		Max.suction l/min(ANR)		Air consumption l/min(ANR)		
			S	L	S	L	S	L	
ZH05B	0.5	Cassette type (Muffler inside)	+88	+48	5	8	13		
ZH07B	0.7				12	20	23		
ZH10B	1.0				24	34	46		
ZH13B	1.3					40	70	78	
ZH05D	0.5	Straight type (no muffler)	+88	+48	5	8	13		
ZH07D	0.7				12	20	23		
ZH10D	1.0				24	34	46		
ZH13D	1.3					40	70	78	
ZH15D	1.5	Straight type (no muffler)	+88	+53	55	75	95		
ZH18D	1.8				65	110	150		
ZH20D	2.0				85	135	185		



Model	A	B	C	ΦD	E	F	G	H	I	J	ΦK	L	Φd	ΦN	O	P
ZH05B <sub>c</sub> 06-06	60	16	22	Φ6	12.8	28	5	47	57	12.8	3.2	24	Φ6	5.8	2	31
ZH07B <sub>c</sub> 06-06	60	16	22	Φ6	12.8	28	5	47	57	12.8	3.2	24	Φ6	5.8	2	31
ZH10B <sub>c</sub> 06-06	63	18	23	Φ6	12.8	29	5	50	60	12.8	3.2	26	Φ6	5.8	2	32
ZH13B <sub>c</sub> 08-10	78	23	27.5	Φ8	13.7	35	7	61	75	15.3	4.2	28	Φ10	7.5	3	38.5

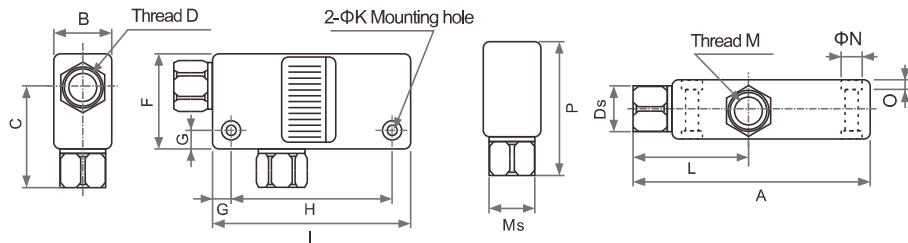


### Cassette type(Muffler inside)Dimension(mm)

Thread connecting



Patent No.:  
ZL 2013 3 0338498.9



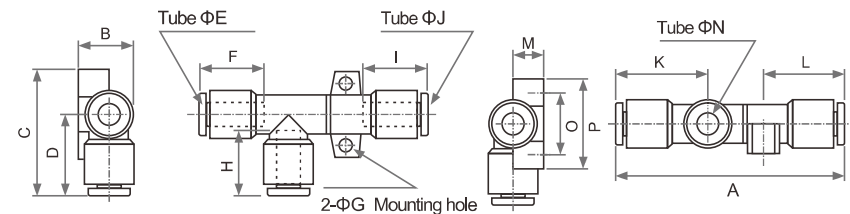
Model	A	B	C	D	Ds	F	G	H	I	ΦK	L	M	Ms	ΦN	O	P
ZH05B <sub>T</sub> 01-01	67.5	16	29.5	Rc1/8"	12	28	5	47	57	3.2	31.5	Rc1/8"	12	5.8	2	38.5
ZH07B <sub>T</sub> 01-01	67.5	16	29.5	Rc1/8"	12	28	5	47	57	3.2	31.5	Rc1/8"	12	5.8	2	38.5
ZH10B <sub>T</sub> 01-01	70.5	18	30.5	Rc1/8"	12	29	5	50	60	3.2	33.5	Rc1/8"	12	5.8	2	39.5
ZH13B <sub>T</sub> 01-02	86.5	23	39	Rc1/8"	14	35	7	61	75	4.2	36.5	Rc1/4"	17	7.5	3	50

### Cassette type(Muffler inside)Dimension(mm)

Push in tube fitting connecting



Patent No.:  
ZL 2013 3 0340205.0

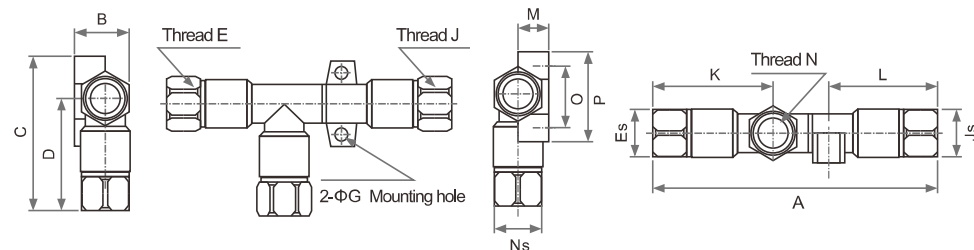


Model	A	B	C	D	ΦE	F	ΦG	H	I	ΦJ	K	L	M	ΦN	O	P
ZH05D <sub>T</sub> 06-06-06	58.5	14.2	34	22	Φ6	12.8	3.2	12.8	12.8	Φ6	24	21	7.8	Φ6	17	24
ZH07D <sub>T</sub> 06-06-06	61	14.2	34	22	Φ6	12.8	3.2	12.8	12.8	Φ6	24	22	7.8	Φ6	17	24
ZH10D <sub>T</sub> 06-06-08	66,70	17.2	37	23	Φ6	12.8	4.2	12.8	13.7	Φ6	26	24.5	9.6	Φ8	20	28
ZH13D <sub>T</sub> 08-10-10	74,79.5	20	42.5	27.5	Φ8	13.7	4.2	15.3	15.3	Φ10	28	27	10.7	Φ10	22	30
ZH15D <sub>T</sub> 10-12-12	93.3	22.45	47	29.5	Φ12	15.3	4.2	15.8	15.8	Φ12	31.5	32.8	12	Φ12	27	35
ZH18D <sub>T</sub> 12-12-12	114	21	41	30.5	Φ12	15.8	3.5	15.8	15.8	Φ12	35.5	50	17	Φ12	10	-
ZH20D <sub>T</sub> 12-16-16	124.6	26.8	16	32.5	Φ12	15.8	3.5	17.2	17.2	Φ16	38.5	54.3	21.7	Φ16	12	-

Thread connecting



Patent No.:  
ZL 2013 3 0338505.5



Model	A	B	C	D	E	Es	ΦG	J	Js	K	L	M	N	Ns	O	P
ZH05D <sub>T</sub> 01-01-01	73.5	14.2	41.5	29.5	Rc1/8"	12	3.2	Rc1/8"	12	31.5	28.5	7.8	Rc1/8"	12	17	24
ZH07D <sub>T</sub> 01-01-01	76	14.2	41.5	29.5	Rc1/8"	12	3.2	Rc1/8"	12	31.5	29.5	7.8	Rc1/8"	12	17	24
ZH10D <sub>T</sub> 01-01-01	82,86	17.2	44.5	30.5	Rc1/8"	12	4.2	Rc1/8"	14	33.5	33	9.6	Rc1/8"	12	20	28
ZH13D <sub>T</sub> 01-02-02	94.5,99.5	20	54	39	Rc1/8"	14	4.2	Rc1/4"	17	36.5	38.5	10.7	Rc1/4"	17	22	30
ZH15D <sub>T</sub> 02-03-03	116.5	22.5	58.5	41	Rc1/4"	17	4.2	Rc3/8"	19	43	44.5	12	Rc3/8"	19	27	35
ZH18D <sub>T</sub> 03-03-03	133	21	52.5	42	Rc3/8"	19	3.5	Rc3/8"	19	47	57.5	17	Rc3/8"	19	10	-
ZH20D <sub>T</sub> 03-04-04	151.1	26.8	61	47.7	Rc3/8"	19	3.5	Rc1/2"	24	50	69.3	22	Rc1/2"	24	12	-

### BM series vacuum generator



### Specification

Model	BM10	BM20	BM30
Supply pressure	4-6bar(Max.:7bar)		
Optimal supply pressure	4.5bar		
Working medium	Dried compressed air		
Ambient temperature	-20°C~+80°C		
Nosie (dBA)	55-68	60-68	60-68
Max.Vacuum deg (kPa)	85		
Max.Vacuum flow (l/min)	75	150	220
Air consumption(l/min)	28-42	55-85	87-125
Min. I.D. of hose (Length of vacuum pipe: less than 2m)	Supply	>2	>4
	Vacuum	>8	>10
	Exhaust	>10	>12

### Characteristics

- 1.Small size and light weight,can be installed easily
- 2.Multi-stage generator can provide larger vacuum flow
- 3.Special plastic materials can bear mostharmful gases
- 4.If sealed with EPDM or FKM, it can be used in an acid or alkali condition

### Flow rate in different vacuum degree(l/min)

Model	Supply pressure	Vacuum degree								
		0	10	20	30	40	50	60	70	80
BM10	4.5bar	70	40.5	25	21	18	14	9.5	5	1.3
BM20	4.5bar	141	77	45	39.5	29.5	25	17.5	12	3
BM30	4.5bar	175	105	70	63	53	40	26	14	6.5
BM10	6bar	75	55	27	20	18	12	9	5	2
BM20	6bar	150	100	55	38	30	24	16	11	3.5
BM30	6bar	220	150	81	65	50	38	27	18	5

### Ordering Code:

BM 10 - B - V

Generator size \*Port Sealing

10	0.10KW	Blank	NBR
20	0.20KW	V	FKM(Viton)
30	0.30KW	K	EPDM

### \*Connecting port

Mark	Inlet	Vacuum	Exhaust
A	M5-Φ6	G1/8"	Inner muffler
NA	M5-Φ6	NPSF1/8"	Inner muffler
B	G1/8"	G3/8"	Inner muffler
BA	G1/8"	G3/8"	Inner muffler Aluminum plate
NB	NPSF1/8"	NPSF3/8"	Inner muffler
NBA	NPSF1/8"	NPSF3/8"	Inner muffler Aluminum plate
C	G1/8"	G3/8"	External muffler
NC	NPSF1/8"	NPSF3/8"	External muffler

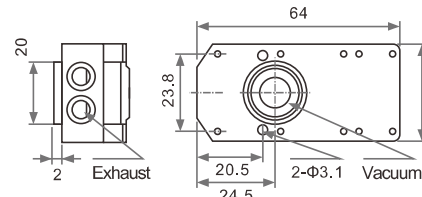
### Suction time in different vacuum degree(s/l)

Model	Supply pressure	Vacuum degree							
		10	20	30	40	50	60	70	80
BM10	4.5bar	0.08	0.2	0.44	0.8	1.24	1.8	2.55	3.8
BM20	4.5bar	0.04	0.12	0.23	0.41	0.65	0.93	1.33	2.03
BM30	4.5bar	0.03	0.09	0.16	0.27	0.43	0.66	0.95	1.43
BM10	6bar	0.029	0.23	0.53	0.92	1.37	1.95	2.77	4.62
BM20	6bar	0.023	0.15	0.28	0.46	0.71	1.02	1.48	2.55
BM30	6bar	0.015	0.077	0.138	0.308	0.49	0.69	1.02	1.75

### Dimension(mm)

BM-B

BA  
NB  
NBA

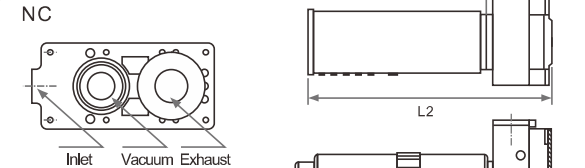


Model	L1(mm)
BM10	20.7
BM20	28
BM30	35

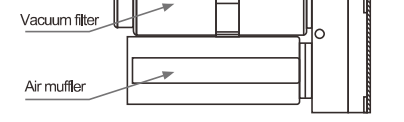
BM-C

NC

\*Other dimension same as B type



Model	L2(mm)
BM10	87
BM20	94.2
BM30	101.5



**BX series**  
vacuum generator



**Specification**

Model	BX10	BX20	BX30
Supply pressure		4-6bar最大7bar	
Optimal supply pressure		4.5bar/5bar(BX30)	
Working medium		干燥的压缩空气	
Ambient temperature		-20°C~+80°C	
Nosie(dBA)	55-68	60-69	60-69
Max.Vacuum deg (kPa)		93	
Max.Vacuum flow (l/min)	63	125	185
Air consumption (l/min)	31-40	79-89	128-137

**Characteristics**

- 1.Small size and light weight,can be installed easily
- 2.Multi-stage generator can provide larger vacuum flow
- 3.With higher vacuum degree than BM series.
- 4.Special plastic materials can bear mostharmful gases
- 5.If sealed with EPDM or FKM, it can be used in an acid or alkali condition

**Ordering Code:**



10	0.10KW	Blank	NBR
20	0.20KW	V	FKM(Viton)
30	0.30KW	K	EPDM

**\*Connecting port**

Mark	Inlet	Vacuum	Exhaust
A	M5-Φ6	G1/8"	Inner muffler
NA	M5-Φ6	NPSF1/8"	Inner muffler
B	G1/8"	G3/8"	Inner muffler
BA	G1/8"	G3/8"	Inner muffler Aluminum plate
NB	NPSF1/8"	NPSF3/8"	Inner muffler
NBA	NPSF1/8"	NPSF3/8"	Inner muffler Aluminum plate
C	G1/8"	G3/8"	External muffler
NC	NPSF1/8"	NPSF3/8"	External muffler

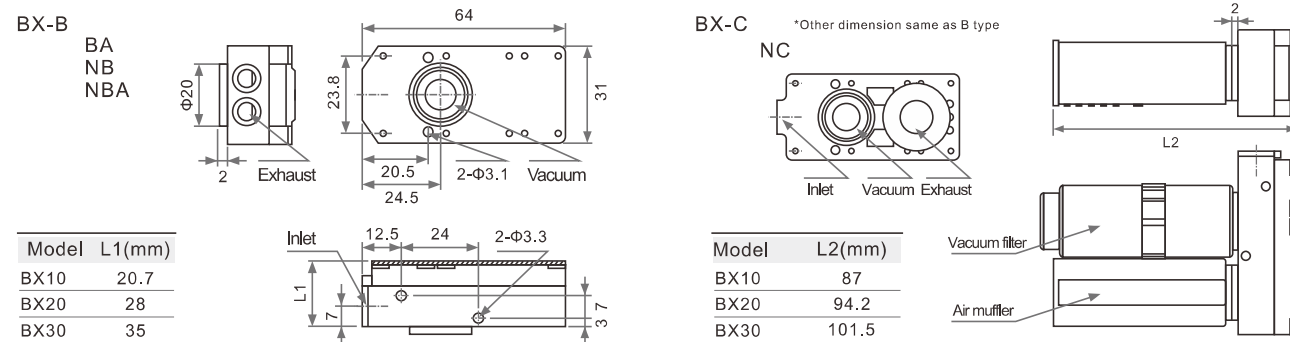
**Flow rate in different vacuum degree(l/min)**

Model	Supply pressure	Vacuum degree									
		0	10	20	30	40	50	60	70	80	90
BX10	4.5bar	52	24	18	15	13	10.5	8	6	2.5	0.8
		100	46	34	30.5	25	21	17	10.5	5	1.6
		180	95	55	45.5	40.5	30.5	25	19	11.5	3
BX20	6bar	63	36	18	16	12.5	10.5	8.5	6	3.5	0.5
		125	73	35	30	25	22	18	12	7	0.9
		185	103	51	46	38	31	25	19	12	1.8
BX30	5bar	63	36	18	16	12.5	10.5	8.5	6	3.5	0.5
		125	73	35	30	25	22	18	12	7	0.9
		185	103	51	46	38	31	25	19	12	1.8

**Suction time in different vacuum degree(s/l)**

Model	Supply pressure	Vacuum degree									
		10	20	30	40	50	60	70	80	90	
BX10	4.5bar	0.11	0.3	0.65	1.1	1.55	2.15	2.85	4.7	10.2	
		0.09	0.16	0.32	0.55	0.8	1.5	1.8	2.7	5	
		0.06	0.12	0.23	0.36	0.53	0.76	1.1	1.6	2.9	
BX20	6bar	0.09	0.32	0.71	1.18	1.74	2.4	3.26	4.55	10.2	
		0.046	0.15	0.31	0.52	0.77	1.08	1.54	2.15	4.92	
		0.025	0.123	0.23	0.38	0.58	0.82	1.11	1.54	3	
BX30	5bar	0.09	0.32	0.71	1.18	1.74	2.4	3.26	4.55	10.2	
		0.046	0.15	0.31	0.52	0.77	1.08	1.54	2.15	4.92	
		0.025	0.123	0.23	0.38	0.58	0.82	1.11	1.54	3	

**Dimension(mm)**



**KS series**  
high speed rotary joint

**Specification**

1. Built-in bearing, can rotate 360° around the central axis at high speed
2. Body material : Brass
3. Max.working pressure : 1.0MPa
4. Can be used in vacuum systems (below100kPa)
5. Applicable tube : PU tube, Nylon tube
6. Standard type with sealant,metric thread with sealing gasket

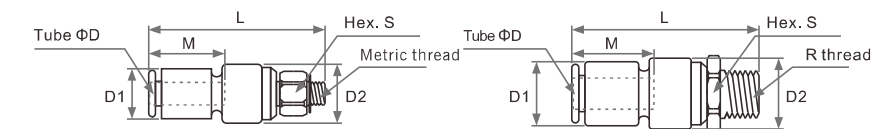
Rotating torque/Rotating speed

Applicable tube O.D.(mm)	Φ4	Φ6	Φ8	Φ10	Φ12
Rotating torque (N.m)	0.006	0.012	0.014	0.020	0.022
Max. allowable speed (rpm)	500	500	400	300	250

Nickel plated for surface treatment, does not produce copper ions

**KSH series rotary straight joint**

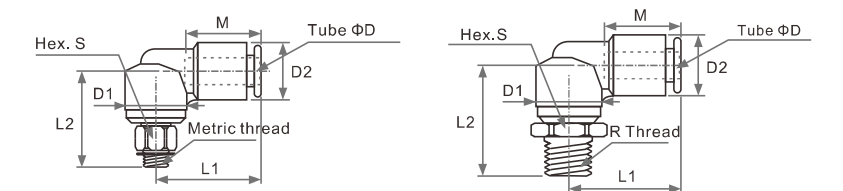
Patent No.:  
ZL 2013 3 0340206.5



Model	ΦD	Thread	S	D1	D2	L	M
KSH04-M5	Φ4	M5X0.8	8	10.4	12	36.5	16
KSH04-M6		M6X1.0					
KSH04-01S	Φ6	1/8"	12	12.8	14	37.5	17
KSH06-M5		M5X0.8					
KSH06-M6	Φ6	M6X1.0	14	12.8	14	38	17
KSH06-01S		1/8"					
KSH06-02S	Φ8	1/4"	17	15.2	17	42.5	18.5
KSH08-01S		1/8"					
KSH08-02S	Φ8	1/4"	17	15.2	17	44	18.5
KSH08-03S		3/8"					
KSH10-02S	Φ10	1/4"	22	18.5	22	54	21
KSH10-03S		3/8"					
KSH10-04S	Φ12	1/2"	24	20.9	24	57.5	22
KSH12-03S		3/8"					
KSH12-04S	Φ12	1/2"	24	20.9	24	57	22
KSH12-04S		1/2"					

**KSL series rotary elbow joint**

Patent No.:  
ZL 2013 3 0338056.4



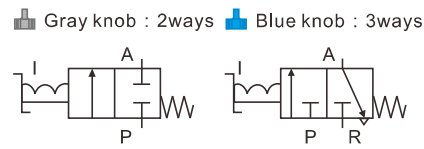
Model	ΦD	Thread	S	D1	D2	L1	L2	M
KSL04-M5	Φ4	M5X0.8	8	10.4	12	21	20.5	16
KSL04-M6		M6X1.0						
KSL04-01S	Φ6	1/8"	12	12.8	14	23	21	17
KSL06-M5		M5X0.8						
KSL06-M6	Φ6	M6X1.0	14	12.8	14	23	21.5	17
KSL06-01S		1/8"						
KSL06-02S	Φ8	1/4"	17	15.2	17	26	26.5	18.5
KSL08-01S		1/8"						
KSL08-02S	Φ8	1/4"	17	15.2	17	26	29.5	18.5
KSL08-03S		3/8"						
KSL10-02S	Φ10	1/4"	22	18.5	22	31.5	34	21
KSL10-03S		3/8"						
KSL10-04S	Φ12	1/2"	24	20.9	24	34	36.5	22
KSL12-03S		3/8"						
KSL12-04S	Φ12	1/2"	24	20.9	24	34	39.5	22
KSL12-04S		1/2"						



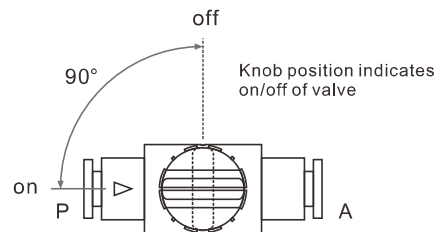
VHK series  
2/3ways hand valve

Ordering Code:

Graphic symbol



Operational approach

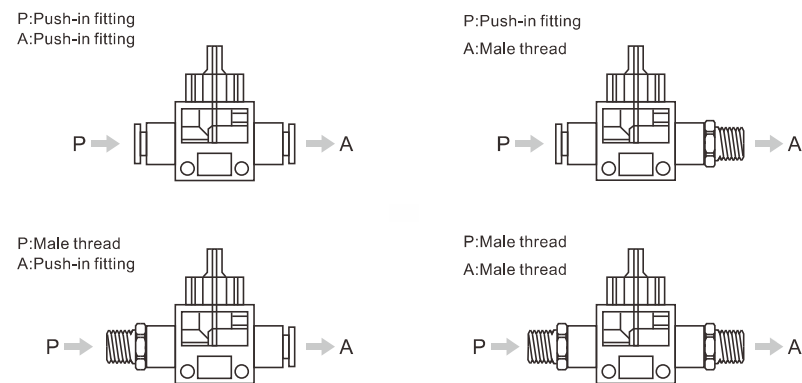


Specification

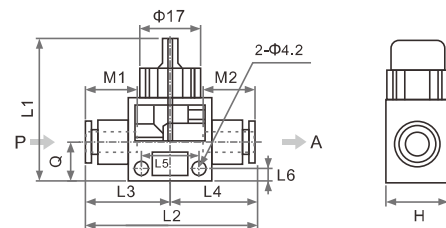
Valve type	2ways , 3ways
Working medium	Air
Max.work pressure	1.0MPa
Vacuum pressure	-100kpa{10Torr}
Ambient temperature	0-60°C
Applicable tube	Nylon tube, PU tube

1. Max. net sectional area (mm<sup>2</sup>): 2.0~17.5mm<sup>2</sup>
2. Min. operating torque: 0.04~0.14N.m
3. There are four connection methods available
4. 3ways valve exhausts residual air from port A through the knob when it is closed.

Connecting type

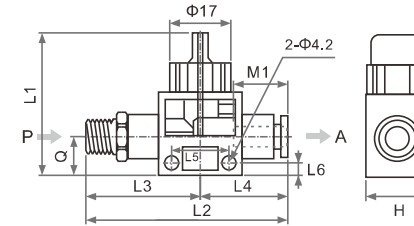


P:Push-in fitting A:Push-in fitting Dimension(mm)

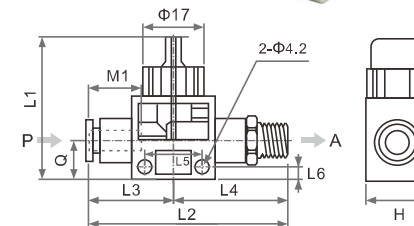


Model	P□	A□	H	L1	L2	L3	L4	L5	L6	M1	M2	Q	有效截面积(mm <sup>2</sup> )	
													P→A	A→R
VHK□-04F-04F	φ4	φ4	18	41	47.6	23.8	23.8	16.5	3.5	15.8	15.8	11	3.4	1.2
VHK□-06F-04F	φ6	φ4	18	41	48	24.3	23.7	16.5	3.5	16.8	15.8	11	5.1	1.2
VHK□-06F-06F	φ6	φ6	18	41	48.6	24.3	24.3	16.5	3.5	16.8	16.8	11	7.2	1.2
VHK□-08F-06F	φ8	φ6	18	41	50.5	24.3	24.3	16.5	3.5	18.7	16.8	11	9	1.2
VHK□-08F-08F	φ8	φ8	18	41	52.4	26.2	26.2	16.5	3.5	18.7	18.7	11	9.7	1.2
VHK□-10F-08F	φ10	φ8	22	46	58.5	28	28	21.5	4	20.8	18.7	14	13.7	3.2
VHK□-10F-10F	φ10	φ10	22	46	61	30.5	30.5	21.5	4	20.8	20.8	14	16.1	3.2
VHK□-12F-10F	φ12	φ10	22	46	62	31.5	30.5	21.5	4	21.8	20.8	14	17	3.2
VHK□-12F-12F	φ12	φ12	22	46	63	31.5	31.5	21.8	4	21.8	21.8	14	17.5	3.2

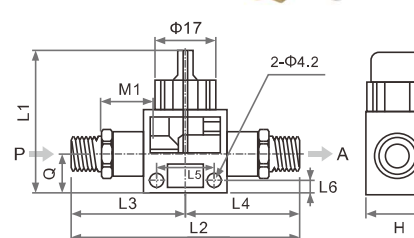
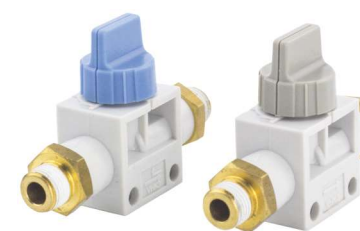
P:Male thread A:Push-in fitting Dimension(mm)



P:Push-in fitting A:Male thread Dimension(mm)



P:Male thread A:Male thread Dimension(mm)



Model	P□	A□	H	L1	L2	L3	L4	L5	L6	M1	Q	Net sectional area (mm <sup>2</sup> )	
												P→A	A→R
VHK□-M5-04F	M5	φ4	18	41	52.9	23.8	29.1	16.5	3.5	15.8	11	2.0	1.2
VHK□-M5-06F	φ6	φ6	18	41	53.9	24.3	29.6	16.5	3.5	16.8	11	3.4	1.2
VHK□-01S-04F	1/8"	φ4	18	41	55.4	23.8	31.6	16.5	3.5	15.8	11	2.0	1.2
VHK□-01S-06F	1/8"	φ6	18	41	56.9	24.3	32.6	16.5	3.5	16.8	11	7.2	1.2
VHK□-01S-08F	1/8"	φ8	18	41	62.2	26.2	36	16.5	3.5	18.7	11	9.7	1.2
VHK□-02S-06F	1/4"	φ6	18	41	60.4	24.3	36.1	16.5	3.5	16.8	11	7.2	1.2
VHK□-02S-08F	1/4"	φ8	18	41	65.2	26.2	39	16.5	3.5	18.7	11	9.7	1.2
VHK□-02S-10F	1/4"	φ10	22	46	73.8	30.5	43.3	21.5	4	20.8	14	16.1	3.2
VHK□-02S-12F	1/4"	φ12	22	46	76.3	31.5	44.8	21.5	4	21.8	14	17.5	3.2
VHK□-03S-06F	3/8"	φ6	18	41	62.4	24.3	38.1	16.5	3.5	16.8	11	7.2	1.2
VHK□-03S-08F	3/8"	φ8	18	41	66.2	26.2	40	16.5	3.5	18.7	11	9.7	1.2
VHK□-03S-10F	3/8"	φ10	22	46	74.8	30.5	44.3	21.5	4	20.8	14	16.1	3.2
VHK□-03S-12F	3/8"	φ12	22	46	77.3	31.5	45.8	21.5	4	21.8	14	17.5	3.2
VHK□-04S-10F	1/2"	φ10	22	46	78.2	30.5	47.7	21.5	4	20.8	14	16.1	3.2
VHK□-04S-12F	1/2"	φ12	22	46	80.2	31.5	48.7	21.5	4	21.8	14	17.5	3.2

Model	P□	A□	H	L1	L2	L3	L4	L5	L6	M1	Q	Net sectional area (mm <sup>2</sup> )	
												P→A	A→R
VHK□-04F-M5	φ4	M5	18	41	52.9	23.8	29.1	16.5	3.5	15.8	11	2.0	1.2
VHK□-04F-01S	φ4	1/8"	18	41	55.4	23.8	31.6	16.5	3.5	15.8	11	3.4	1.2
VHK□-06F-M5	φ6	M5	18	41	53.9	24.3	29.6	16.5	3.5	16.8	11	2.0	1.2
VHK□-06F-01S	φ6	1/8"	18	41	56.9	24.3	32.6	16.5	3.5	16.8	11	7.2	1.2
VHK□-06F-02S	φ6	1/4"	18	41	60.4	24.3	36.1	16.5	3.5	16.8	11	7.2	1.2
VHK□-06F-03S	φ6	3/8"	18	41	62.4	24.3	38.1	16.5	3.5	16.8	11	7.2	1.2
VHK□-08F-01S	φ8	1/8"	18	41	62.2	26.2	36	16.5	3.5	18.7	11	9.7	1.2
VHK□-08F-02S	φ8	1/4"	18	41	65.2	26.2	39	16.5	3.5	18.7	11	9.7	1.2
VHK□-08F-03S	φ8	3/8"	18	41	66.2	26.2	40	16.5	3.5	18.7	11	9.7	1.2
VHK□-10F-02S	φ10	1/4"	22	46	73.8	30.5	43.3	21.5	4	20.8	14	16.1	3.2
VHK□-10F-03S	φ10	3/8"	22	46	74.8	30.5	44.3	21.5	4	20.8	14	16.1	3.2
VHK□-10F-04S	φ10	1/2"	22	46	78.2	30.5	47.7	21.5	4	20.8	14	16.1	3.2
VHK□-12F-02S	φ12	1/4"	22	46	76.3	31.5	44.8	21.5	4	21.8	14	17.5	3.2
VHK□-12F-03S	φ12	3/8"	22	46	77.3	31.5	45.8	21.5	4	21.8	14	17.5	3.2
VHK□-12F-04S	φ12	1/2"	22	46	80.2	31.5	48.7	21.5	4	21.8	14	17.5	3.2

Model	P□	A□	H	L1	L2	L3	L4	L5	L6	M1	Q	Net sectional area (mm <sup>2</sup> )	
												P→A	A→R
VHK□-M5-M5	M5	M5	18	41	58.2	29.1	29.1	16.5	3.5	11	11	2.0	1.2
VHK□-01S-M5	1/8"	M5	18	41	61.6	29	29	16.5	3.5	11	11	2.0	1.2
VHK□-01S-01S	1/8"	1/8"	18	41	65.2	32.6	32.6	16.5	3.5	11	11	8.6	1.2
VHK□-02S-01S	1/4"	1/8"	18	41	71.6	39	32.6	16.5	3.5	11	11	9.0	1.2
VHK□-02S-02S	1/4"	1/4"	18	41	78	39	39	16.5	3.5	11	11	9.7	1.2
VHK□-03S-02S	3/8"	1/4"	22	46	85.1	44.3	40.8	21.5	4	14	14	13.7	3.2
VHK□-03S-03S	3/8"	3/8"	22	46	88.6	44.3	44.3	21.5	4	14	14	16.1	3.2
VHK□-04S-03S	1/2"	3/8"	22	46	93	48.7	44.3	21.5	4	14	14	15.1	3.2
VHK□-04S-04S	1/2"	1/2"	22	46	97.4	48.7	48.7	21.5	4	14	14	17.5	3.2

### AKH series

check valve

#### Graphic symbol



#### Characteristics:

- 1.Prevent air reverse flow
- 2.Applied for vacuum system(-100KPa)
- 3.Small size and light weight,can be installed easily

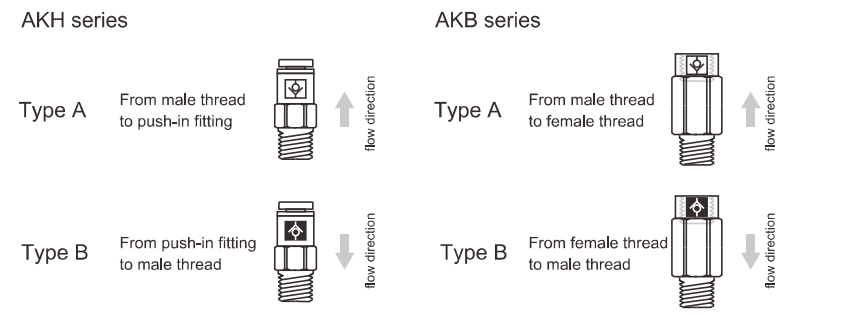
#### Connecting port:

Push-in fitting		Thread	
Mark	Tube	Mark	Thread
04	Φ4	M5	M5x0.8
06	Φ6	1/8	Rc1/8"
08	Φ8	1/4	Rc1/4"
10	Φ10	3/4	Rc3/8"
12	Φ12	1/2	Rc1/2"

#### Specification

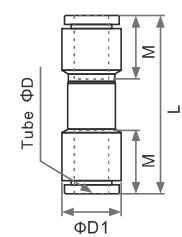
Working medium	Compressed air
Working pressure	-100KPa-1MPa
Cracking pressure	0.005MPa
Ambient temperature	~5-60 (not frozen)
Applicable tube	Nylon tube, PU tube

#### Air flow direction



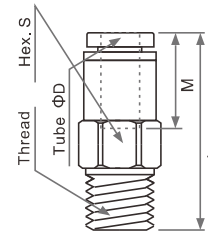
Available color for cover ● Available color for body ●

#### AKH Push-in fitting on both side Dimension(mm)



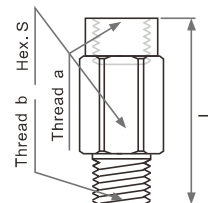
Model	Tube ΦD	ΦD1	L	M
AKH04-00	Φ4	9.3	33.5	12.7
AKH06-00	Φ6	11.6	37.1	13.5
AKH08-00	Φ8	15.2	53.3	18.5
AKH10-00	Φ10	18.5	63.6	21
AKH12-00	Φ12	21.7	70.2	22

#### AKH One side push-in fitting one side thread Dimension(mm)



Model	ΦD	Thread	S	L	M
AKH04□-M5	Φ4	M5X0.8	8	24.3	12.7
AKH04□-01S		1/8"	10	24.6	
AKH06□-M5	Φ6	M5X0.8	10	25.8	13.6
AKH06□-01S		1/8"	10	26.9	
AKH06□-02S	Φ6	1/4"	14	31	17
AKH08□-01S		1/8"	14	31.7	
AKH08□-02S	Φ8	1/4"	14	42	18.5
AKH08□-03S		3/8"	17	54.2	
AKH10□-02S	Φ10	1/4"	17	47.2	21
AKH10□-03S		3/8"	17	49.2	
AKH12□-03S	Φ12	3/8"	19	60.5	
AKH12□-04S		1/2"	22	54.5	22

#### AKB One side female one side male thread Dimension(mm)

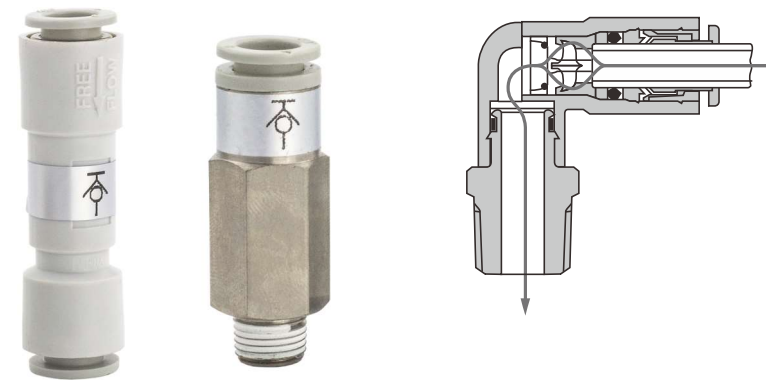


Model	Thread		S	L
	a	b		
AKB01□-01S	1/8"	1/8"	14	23.7
AKB02□-02S	1/4"	1/4"	17	39.8
AKB03□-03S	3/8"	3/8"	22	45.2
AKB04□-04S	1/2"	1/2"	14	56.2

### KC series

self-styled fitting

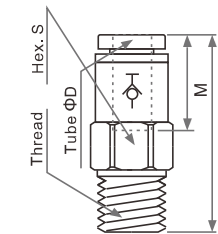
#### Specification



#### Characteristics

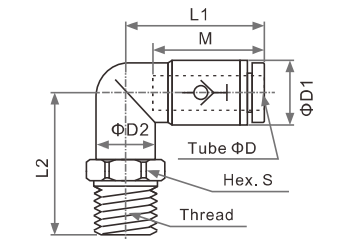
1. When removing the tube, it can prevent air out from the fitting
2. Materials of body: Brass
3. Max. working pressure: 1.0MPa
4. Applicable tube: Nylon tube, PU tube
5. Standard type with sealant
6. Nickel plated surface treatment, does not produce copper ions.

#### KCH Male straight self-styled fitting



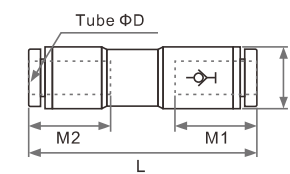
Model	ΦD	Thread	Hex.S	L	M
KCH04-M5	Φ4	M5X0.8	8	30.8	18
KCH04-01S		1/8"	10	26.1	
KCH06-M5	Φ6	M5X0.8	8	32.4	19.5
KCH06-01S		1/8"	12	37.4	
KCH06-02S	Φ6	1/4"	14	28.9	19
KCH08-01S		1/8"	14	42.4	
KCH08-02S	Φ8	1/4"	14	45.7	21.5
KCH08-03S		3/8"	17	34	
KCH10-02S	Φ10	1/4"	17	50.5	
KCH10-03S		3/8"	17	51.5	24
KCH12-03S	Φ12	3/8"	19	54.2	
KCH12-04S		1/2"	22	41.6	25.5

#### KCL Male elbow self-styled fitting



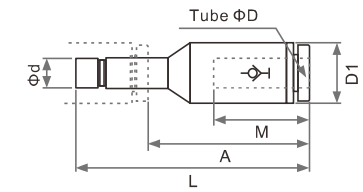
Model	ΦD	Thread	S	ΦD1	ΦD2	L1	L2	M
KCL04-M5	Φ4	M5X0.8	8	10.4	8	25.3	16.7	18
KCL04-01S		1/8"	10	10	23			
KCL06-M5	Φ6	M5X0.8	8	12.8	8	26.8	17.4	19.5
KCL06-01S		1/8"	12	12	25.1			
KCL06-02S	Φ6	1/4"	14	14	28	29.1	19	
KCL08-01S		1/8"	14	15.2	14	34.1	27.1	21.5
KCL08-02S	Φ8	1/4"	14	14	31.1			
KCL08-03S		3/8"	17	17	38	33.9	24	
KCL10-02S	Φ10	1/4"	17	18.5	17	38	35.9	24
KCL10-03S		3/8"	17	18.5	17	38	35.9	24
KCL12-03S	Φ12	3/8"	22	20.9	22	40.7	40.3	25.5
KCL12-04S		1/2"	22	20.9	22	40.7	43.2	

#### KCH Straight self-styled fitting



Model	ΦD	ΦD1	L	M1	M2
KCH04-00	Φ4	10.4	42.1	18	16
KCH06-00	Φ6	12.8	45.8	19	17
KCH08-00	Φ8	15.2	52.8	21.5	18.5
KCH10-00	Φ10	18.5	59.8	24	21
KCH12-00	Φ12	20.9	63.5	25.5	22

#### KCJ Plug-in self-styled fitting

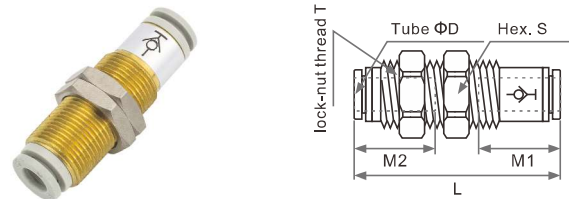


Model	ΦD	Φd	ΦD1	L	A	M
KCJ04-99	Φ4	Φ4	9.8	48.5	33.5	18
KCJ06-99	Φ6	Φ6	11.8	54	37	19
KCJ08-99	Φ8	Φ8	14	61	42.5	21.5
KCJ10-99	Φ10	Φ10	17	70.4	49.4	24
KCJ12-99	Φ12	Φ12	19	74.4	52.4	25.5



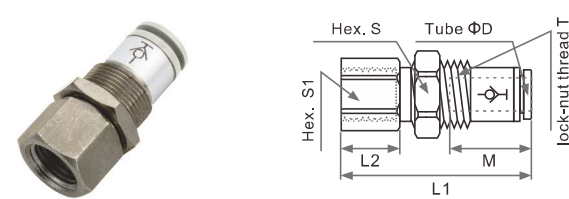
**KC series**  
self-styled fitting

**KCE Bulkhead self-styled fitting**



	ΦD	T	S	L	M1	M2	Mounting hole
KCE04-00	Φ4	M12X1	14	42	18	16	13
KCE06-00	Φ6	M14X1	17	45.5	19	17	15
KCE08-00	Φ8	M16X1	19	52.5	21.5	18.5	17
KCE10-00	Φ10	M20X1	24	59.5	24	21	21
KCE12-00	Φ12	M22X1	27	63.2	25.5	22	23

**KCE Female bulkhead self-styled fitting**



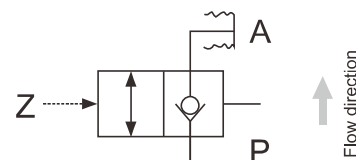
Model	ΦD	Thread	T	S1	S2	L1	L2	M	M1	M2	Mounting hole
KCE04-02	Φ4	1/4"	M12X1	17	14	40.5	14.7	16	13		13
KCE06-02	Φ6	1/4"	M14X1	17	17	42.7	14.7	17	15		15
KCE08-03	Φ8	3/8"	M16X1	19	19	49.4	15	18.5	17		17
KCE10-03	Φ10	3/8"	M20X1	22	24	53.9	14.2	21	21		21
KCE12-03	Φ12	3/8"	M22X1	24	27	56.1	13.7	22	23		23

**QDS series**

pneumatic lock Pneumatically control check valve



**Graphic symbol**



**Specification**

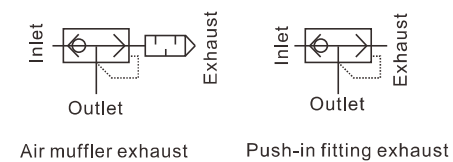
Model	P female thread	A male thread
QDS-G1/8-01	1/8"	1/8"
QDS-G1/4-02	1/4"	1/4"
QDS-G3/8-03	3/8"	3/8"
QDS-G1/2-04	1/2"	1/2"

**AQ240F/340F series**

Quick exhaust valve



**Graphic symbol**



**Specification**

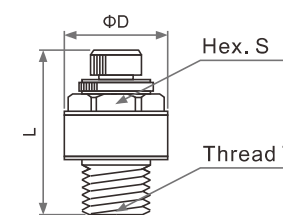
Max. work pressure	1MPa
Min. work pressure	0.1MPa
Ambient temp.	~5-60
Applicable tube	Nylon tube, PU tube
Standard type: with push-in fitting exhaust	
Fixed directly for mounting, save space	

**ASN2 series**

throttle valve(with air muffler)



**Dimension(mm)**



**Ordering Code:**

AQ	2	4	0	F	-	04	-	04
	body valve	push-in fitting	Inlet tube O.D.	Exhaust tube O.D.				
2	M5(base)		04 φ4	00 built-in muffler				
3	1/8(base)		06 φ6	04 φ4				
				06 φ6				

**Specification**

	Model	Tube ΦD		Net sectional area (mm <sup>2</sup> )	
		Inlet	Exhaust	in→out	out→in
with air muffler	AQ240F-04-00	φ4	—	1.7	2.5
	AQ240F-06-00	φ6	—	2.4	2.7
	AQ340F-06-00	φ6	—	4	4
with push in fitting	AQ240F-04-04	φ4	φ4	1.7	2.5
	AQ240F-06-06	φ6	φ6	2.4	2.7
	AQ340F-06-06	φ6	φ6	4	4

**Dimension(mm)**

		with air muffler		push-in fitting exhaust						
		ΦD1	ΦD2	ΦD3	L1	L2	L3	L4	L5	M1
with air muffler	with push-in fitting									
AQ240F-04-00	AQ240F-04-04	9.5	8.9	10	39.3	5.2	14.3	13.7	23.5	13
AQ240F-06-00	AQ240F-06-06	11.5	11	10	40.7	6.2	15.4	14.7	26.7	13.7
AQ340F-06-00	AQ340F-06-06	11.5	11	11.8	44.8	6.3	19.5	19.6	31.7	13.7

**Graphic symbol**



**Specification**

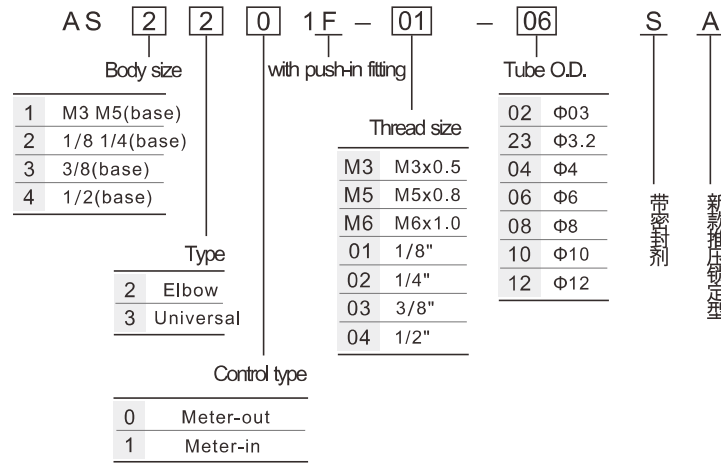
Model	ASN2-M5	ASN2-01	ASN2-02	ASN2-03	ASN2-04
Working medium	Compressed air				
Max.work pressure	1.0MPa				
Ambient temp.	-5~6°C (not frozen)				
Thread	M5X0.8	1/8	1/4	3/8	1/2
Net sec.area(mm <sup>2</sup> )	1.8	3.6	6.5	16.6	24.5

**Dimension(mm)**

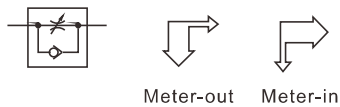
Model	T	D	L		Hex. S
			Max.	Min.	
ASN2-M5	M5X0.8	10	20.5	23.3	8
ASN2-01	1/8"	15	30	35	12
ASN2-02	1/4"	20	34.2	39.2	17
ASN2-03	3/8"	25	37	42	19
ASN2-04	1/2"	30	49	54	24

AS series speed controller

Ordering Code:



Graphic symbol



Characteristics

- Small size and light weight
- Easy to connect with push in tube fitting
- With high net sectional area
- Installation direction of tube can be free angle
- Max.operating pressure can reach 1.0MPa

Specification

Working medium	Air
Proof pressure	1.5MPa(1.05MPa for metric size)
Max.operating pressure	1MPa( 0.7MPa for metric size)
Min.operating pressure	0.1MPa
Ambient and fluid temperature	- 5~60°C(not freezing)
Applicable tubing	Nylon tube, PU tube

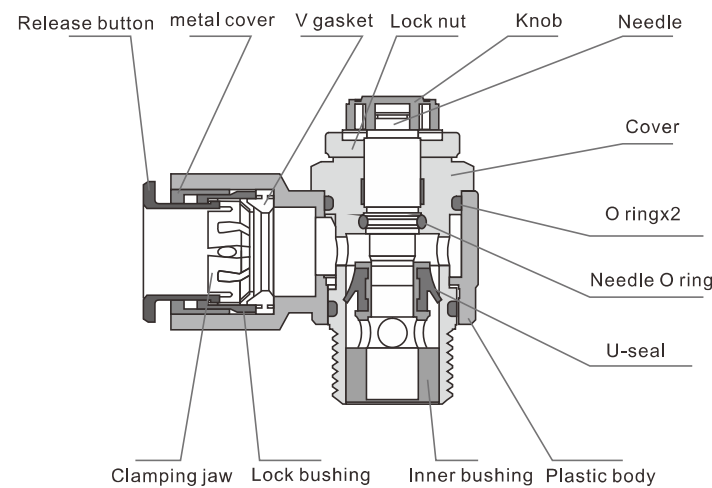
Structure patent description

New name : speed controller with needle inner bushing sealing

Patent No.: ZL 2013 2 0430580.9

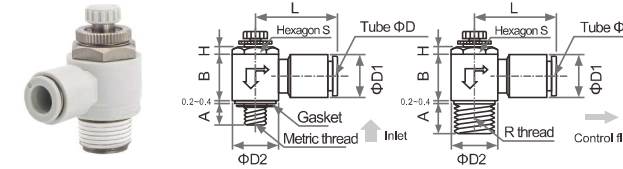
Summary:

The new utility patent discloses a kind of speed controller with needle valve sealing equipment,which includes valve body, element,and base. The valve element and the base are located inside the valve body. An adjustment hand wheel is designed at the top of the element. The element is consisted of stem and disc. The disc is set to the cone surface of the truncated cone. The connecting part between the valve seat and valve disc is provided with a groove matching with the cone surface of the truncated cone. Conical seal is designed between the element and base. This utility model reduces the cost of the speed controller with the needle valve inner sleeve sealing device, and



AS series speed controller

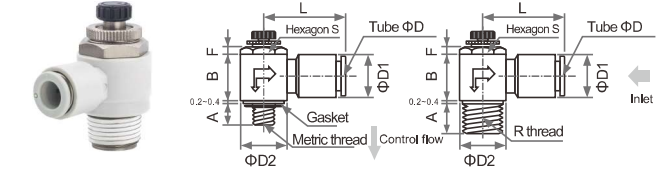
AS\*201F Meter-out



Model	ΦD	Thread Size	Hexagon			L	D1	D2	B
			A	S	H				
AS1201F-M3-04	Φ4	M3X0.5	3.1	8	3.2	17.8		9.6	12
AS1201F-M5-04		M5X0.8	4	8	3.2	17.8	9.6	9.6	12
AS2201F-01-04S		1/8"	7.5	12	3.5	20		14.2	13
AS2201F-02-04S		1/4"	10.5	17	4	25	10.8	18.4	14
AS1201F-M3-06	Φ6	M3X0.5	3.1	8	3.2	18		9.6	12
AS1201F-M5-06		M5X0.8	4	8	3.2	18		9.6	12
AS2201F-01-06S		1/8"	7.5	12	3.5	21	11.8	14.2	13
AS2201F-02-06S		1/4"	10.5	17	4	24.2		18.4	14
AS3201F-03-06S		3/8"	11	19	4	28.8	13.3	22.5	18
AS2201F-01-08S	Φ8	1/8"	7.5	12	3.5	24.5		14.2	13
AS2201F-02-08S		1/4"	10.5	17	4	26	15.8	18.4	14
AS3201F-03-08S		3/8"	11	19	4	32.6		22.5	18
AS2201F-01-10S	Φ10	1/8"	7.5	12	3.5	29.6		14.5	12
AS2201F-02-10S		1/4"	10.5	17	4	35.2	19	18.4	14
AS3201F-03-10S		3/8"	11	19	4	31.6		22.5	18
AS4201F-04-10S		1/2"	14.5	24	4	33.3		28	21.6
AS3201F-03-12S	Φ12	3/8"	11	19	4	32.3	21.3	22.5	18
AS4201F-04-12S		1/2"	14.5	24	4	34.6		28	21.6

Available color for cassette ●●● Available color for body ●●●

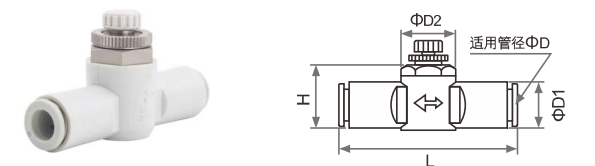
AS\*211F Meter-in



Model	ΦD	Thread Size	Hexagon			L	D1	D2	B
			A	S	H				
AS1211F-M3-04	Φ4	M3X0.5	3.1	8	3.2	17.8		9.6	12
AS1211F-M5-04		M5X0.8	4	8	3.2	17.8	9.6	9.6	12
AS2211F-01-04S		1/8"	7.5	12	3.5	20		14.2	13
AS2211F-02-04S		1/4"	10.5	17	4	25	10.8	18.4	14
AS1211F-M3-06	Φ6	M3X0.5	3.1	8	3.2	18		9.6	12
AS1211F-M5-06		M5X0.8	4	8	3.2	18		9.6	12
AS2211F-01-06S		1/8"	7.5	12	3.5	21	11.8	14.2	13
AS2211F-02-06S		1/4"	10.5	17	4	24.2		18.4	14
AS3211F-03-06S		3/8"	11	19	4	28.8	13.3	22.5	18
AS2211F-01-08S	Φ8	1/8"	7.5	12	3.5	24.5		14.2	13
AS2211F-02-08S		1/4"	10.5	17	4	26	15.8	18.4	14
AS3211F-03-08S		3/8"	11	19	4	32.6		22.5	18
AS2211F-01-10S	Φ10	1/8"	7.5	12	3.5	29.6		14.2	12
AS2211F-02-10S		1/4"	10.5	17	4	35.2	19	18.4	14
AS3211F-03-10S		3/8"	11	19	4	31.6		22.5	18
AS4211F-04-10S		1/2"	14.5	24	4	33.3		28	21.6
AS3211F-03-12S	Φ12	3/8"	11	19	4	32.3	21.3	22.5	18
AS4211F-04-12S		1/2"	14.5	24	4	34.6		28	21.6

Available color for cassette ●●● Available color for body ●●●

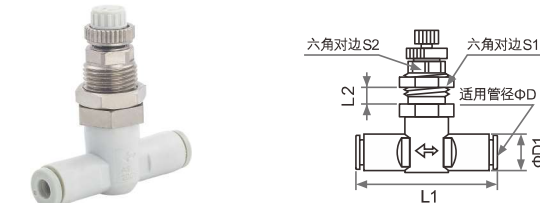
AS\*\*1F Duct type speed controller



Model	ΦD	L	H	ΦD1	ΦD2
AS1001F-04	Φ4	39.2	14.8	10.2	9.6
AS2001F-04		40.3	20	12	
AS1001F-06	Φ6	40.7	15.7	10.2	11.8
AS2001F-06		45.2	21	12	
AS2051F-06		53.3	22.3	15.1	13
AS3001F-06		60.2	24.4	20.3	
AS2051F-08	Φ8	60.8	19.8	15.1	15.6
AS3001F-08		65	25.3	20.4	
AS3001F-10	Φ10	71	26.6	20.4	19
AS4001F-10		77	31.2	18.5	
AS3001F-12	Φ12	76.2	32.5	20.3	21.4
AS4001F-12		82	32.2	27.3	

Available color for cassette ●●● Available color for body ●●●

AS\*\*1F-3 Bulkhead type speed controller



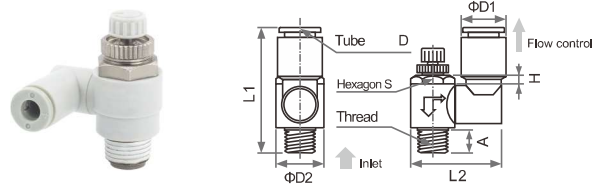
Model	ΦD	L1	L2	S1	S2	ΦD1
AS1001F-04-3	Φ4	9.3	12	8	39.2	3.5
AS2001F-04-3		9.3	14	10	40.7	3.5
AS1001F-06-3	Φ6	11.6	12	8	40.7	3.5
AS2001F-06-3		11.6	14	10	44.8	3.5
AS2051F-06-3		12.8	17	13	53.2	3.5
AS3001F-06-3		12.8	17	13	59	3.5
AS2051F-08-3	Φ8	15.2	17	13	59.8	3.5
AS3001F-08-3		15.2	17	13	64.4	3.5
AS3001F-10-3	Φ10	18.5	21	16	71.6	3.5
AS3001F-12-3	Φ12	20.9	21	16	76	3.5

Available color for cassette ●●● Available color for body ●●●



AS series  
speed controller

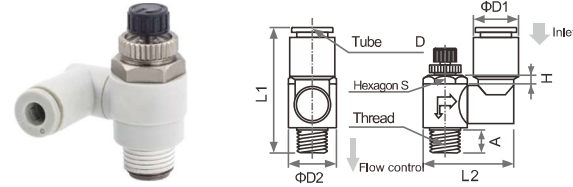
AS\*301F Meter-out Universal speed controller



Model	ΦD	Thread Size	Hexagon			L1	L2	D1	D2
			A	S	H				
AS1301F-M3-04	Φ4	M3X0.5	3.1	8	3.2	28.7	22.1	9.6	
AS1301F-M5-04		M5X0.8	4	8	3.2	28.7	22.1	9.3	9.6
AS2301F-01-04S		1/8"	7.5	12	3.5	31.8	27.5		14.2
AS2301F-02-04S		1/4"	10.5	17	4	40.1	34.4	10.4	18.5
AS1301F-M3-06	Φ6	M3X0.5	3.1	8	3.2	31.8	22.9	9.6	
AS1301F-M5-06		M5X0.8	4	8	3.2	31.8	22.9		9.6
AS2301F-01-06S		1/8"	7.5	12	3.5	37.2	27.5	11.6	14.2
AS2301F-02-06S		1/4"	10.5	17	4	42.6	34.4		18.5
AS3301F-03-06S	3/8"	11	19	4	46.1	39.3	12.8	23	
AS2301F-01-08S	Φ8	1/8"	7.5	12	3.5	41.7	32.4		14.2
AS2301F-02-08S		1/4"	10.5	17	4	45.6	36.4	15.2	18.5
AS3301F-03-08S		3/8"	11	19	4	49.1	41		23
AS2301F-01-10S	Φ10	1/8"	7.5	12	3.5	43.6	40.2		14.2
AS2301F-02-10S		1/4"	10.5	17	4	48.4	43.2	18.5	18.5
AS3301F-03-10S		3/8"	11	19	4	53.5	43.3		23
AS4301F-04-10S	1/2"	14.5	24	4	58	47.9		28	
AS3301F-03-12S	Φ12	3/8"	11	19	4	55.3	44.3	20.9	23
AS4301F-04-12S		1/2"	14.5	24	4	61.7	48.9		28

Available color for cassette ● Available color for body ●

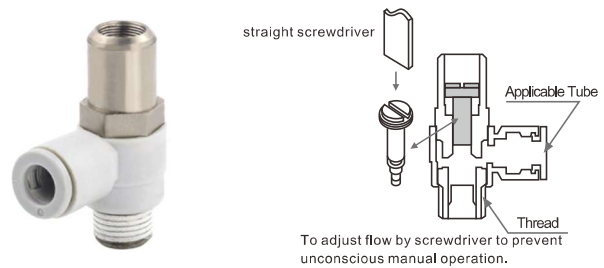
AS\*311F Meter-in Universal speed controller



Model	ΦD	Thread Size	Hexagon			L1	L2	D1	D2
			A	S	H				
AS1311F-M3-04	Φ4	M3X0.5	3.1	8	3.2	28.7	22.1	9.6	
AS1311F-M5-04		M5X0.8	4	8	3.2	28.7	22.1	9.3	9.6
AS2311F-01-04S		1/8"	7.5	12	3.5	31.8	27.5		14.2
AS2311F-02-04S		1/4"	10.5	17	4	40.1	34.4	10.4	18.5
AS1311F-M3-06	Φ6	M3X0.5	3.1	8	3.2	31.8	22.9	9.6	
AS1311F-M5-06		M5X0.8	4	8	3.2	31.8	22.9		9.6
AS2311F-01-06S		1/8"	7.5	12	3.5	37.2	27.5	11.6	14.2
AS2311F-02-06S		1/4"	10.5	17	4	42.6	34.4		18.5
AS3211F-03-06S	3/8"	11	19	4	46.1	39.3	12.8	23	
AS2311F-01-08S	Φ8	1/8"	7.5	12	3.5	41.7	32.4		14.2
AS2311F-02-08S		1/4"	10.5	17	4	45.6	36.4	15.2	18.5
AS3211F-03-08S		3/8"	11	19	4	49.1	41		23
AS2311F-01-10S	Φ10	1/8"	7.5	12	3.5	43.6	40.2		14.2
AS2311F-02-10S		1/4"	10.5	17	4	48.4	43.2	18.5	18.5
AS3311F-03-10S		3/8"	11	19	4	53.5	43.3		23
AS4311F-04-10S	1/2"	14.5	24	4	58	47.9		28	
AS3311F-03-12S	Φ12	3/8"	11	19	4	55.3	44.3	20.9	23
AS4311F-04-12S		1/2"	14.5	24	4	61.7	48.9		28

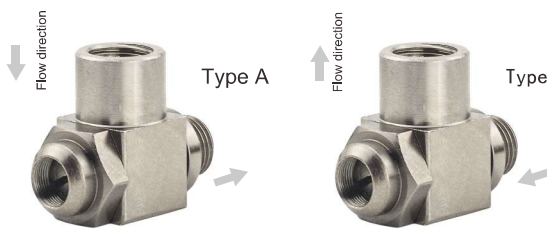
Available color for cassette ● Available color for body ●

AS\*\*01F-D Straight screwdriver adjusting speed controller



Thread	1/8"	1/4"	3/8"	1/2"
Φ4	AS2201F-01-04S-D	AS2201F-02-04S-D		
Φ6	AS2201F-01-06S-D	AS2201F-02-06S-D	AS2201F-03-06S-D	
Φ8	AS2201F-01-08S-D	AS2201F-02-08S-D	AS2201F-03-08S-D	
Φ10	AS2201F-01-10S-D	AS2201F-02-10S-D	AS2201F-03-10S-D	AS2201F-04-10S-D
Φ12			AS2201F-03-12S-D	AS2201F-04-12S-D

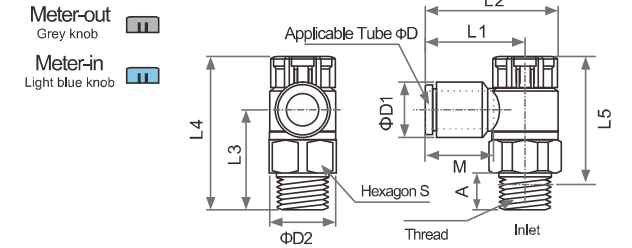
GRLA Full metal precision speed controller



Model	
GRLA-G1/8-A	GRLA-G1/8-B
GRLA-G1/4-A	GRLA-G1/4-B
GRLA-G3/8-A	GRLA-G3/8-B
GRLA-G1/2-A	GRLA-G1/2-B

AS series  
speed controller

New style AS\*A Push lock type speed controller



Model	Tube ΦD	Thread M	Thread Size	A	S	D1	D2	L1	L2	L3	L4		L5		
											unlock	Lock	unlock	Lock	
AS1201F-M5-04A	AS1211F-M5-04A	Φ4	M5X0.8	4	8	8.2	9.4	17.2	21.7	16.5	26.5	25.4	23.5	22.4	
AS2201F-01-04SA	AS2211F-01-04SA	Φ4	13.3	1/8"	7.5	13	8.2	12	19.1	26.2	19.1	30.6	29.2	27.5	26.1
AS2201F-02-04SA	AS2211F-02-04SA			1/4"	10.5	17	8.2	13	20.9	30.2	22.6	36.6	35	31.1	29.5
AS1201F-M5-06A	AS1211F-M5-06A	Φ6	13.3	M5X0.8	4	8	10.4	9.4	18.6	23.1	16.5	26.5	25.4	23.5	22.4
AS2201F-01-06SA	AS2211F-01-06SA			1/8"	7.5	13	10.4	12	19.1	26.2	19.1	30.6	29.2	27.5	26.1
AS2201F-02-06SA	AS2211F-02-06SA			1/4"	10.5	17	10.4	13	23.4	32.7	22.6	36.6	35	31.1	29.5
AS3201F-02-06SA	AS3211F-02-06SA			1/4"	10.5	19	10.4	16.6	21.8	32.1	36.4	50	48.4	44.5	42.9
AS3201F-03-06SA	AS3211F-03-06SA	3/8"	11	19	10.4	16.6	21.8	32.1	28.7	42.3	40.7	37.1	35.5		
AS2201F-01-08SA	AS2211F-01-08SA	Φ8	14.2	1/8"	7.5	13	13.2	12	22.4	29.5	19.1	30.6	29.2	27.5	26.1
AS2201F-02-08SA	AS2211F-02-08SA			1/4"	10.5	17	13.2	13	23.9	33.2	22.6	36.6	35	31.1	29.5
AS3201F-02-08SA	AS3211F-02-08SA			1/4"	10.5	19	13.2	16.6	22.7	33	36.4	50	48.4	44.5	42.9
AS3201F-03-08SA	AS3211F-03-08SA			3/8"	11	19	13.2	16.6	22.7	33	28.7	42.3	40.7	37.1	35.5
AS2201F-01-10SA	AS2211F-01-10SA	Φ10	15.6	1/8"	7.5	13	15.9	12	25.3	32.4	19.1	30.6	29.2	27.5	26.1
AS2201F-02-10SA	AS2211F-02-10SA			1/4"	10.5	17	15.9	13	26.9	36.2	22.6	36.6	35	31.1	29.5
AS3201F-02-10SA	AS3211F-02-10SA			1/4"	10.5	19	15.9	16.6	26.7	37	35.7	50	48.4	44.5	42.9
AS3201F-03-10SA	AS3211F-03-10SA			3/8"	11	19	15.9	16.6	26.7	37	28	42.3	40.7	37.1	35.5
AS4201F-04-10SA	AS4211F-04-10SA	1/2"	14.5	24	15.9	18.8	27.4	40.3	36.2	50.8	49.2	43.7	42.1		
AS3201F-02-12SA	AS3211F-02-12SA	Φ12	17	1/4"	10.5	19	18.5	16.6	29.7	40	34.5	50	48.4	44.5	42.9
AS3201F-03-12SA	AS3211F-03-12SA			3/8"	11	19	18.5	16.6	29.7	40	26.8	42.3	40.7	37.1	35.5
AS4201F-04-12SA	AS4211F-04-12SA			1/2"	14.5	24	18.5	18.8	30.8	43.7	35.1	50.8	49.2	43.7	42.1
AS4201F-04-16SA	AS4211F-04-16SA			Φ16	20.6	1/2"	14.5	24	23.8	18.8	34.8	47.7	32.7	50.8	49.2

\*L5 is the reference length after screwing the thread

ASV series exhaust type speed controller

Ordering Code:

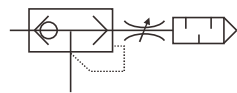


ASV	3	1	0	F	-	01	-	06	S	K
	Body size		Type					Applicable tube		Available nut
2	M5(base)	1	T type					04 Φ4		Blank None
3	1/8(base)	2	Elbow					06 Φ6		C with splash guard nut
4	1/4(base)							08 Φ8		K Hexagon nut
5	3/8(base)							10 Φ10		
6	1/2(base)							12 Φ12		
						Thread				
						M3	M3X0.5			
						M5	M5X0.8			
						01	1/8"			
						02	1/4"			
						03	3/8"			
						04	1/2"			

Characteristics

- 1.Quick exhaust valve is integrated with throttle valve, which contributes to high-speed movement of air cylinder.
- 2.About 2times net sectional area than speed controller.
- 3.Built in air muffler and push-in tube fittings
- 4.For standard type,the material of body is flame retardant resin(UL-V-0).
- 5.Electroless nickel plated for all brass parts

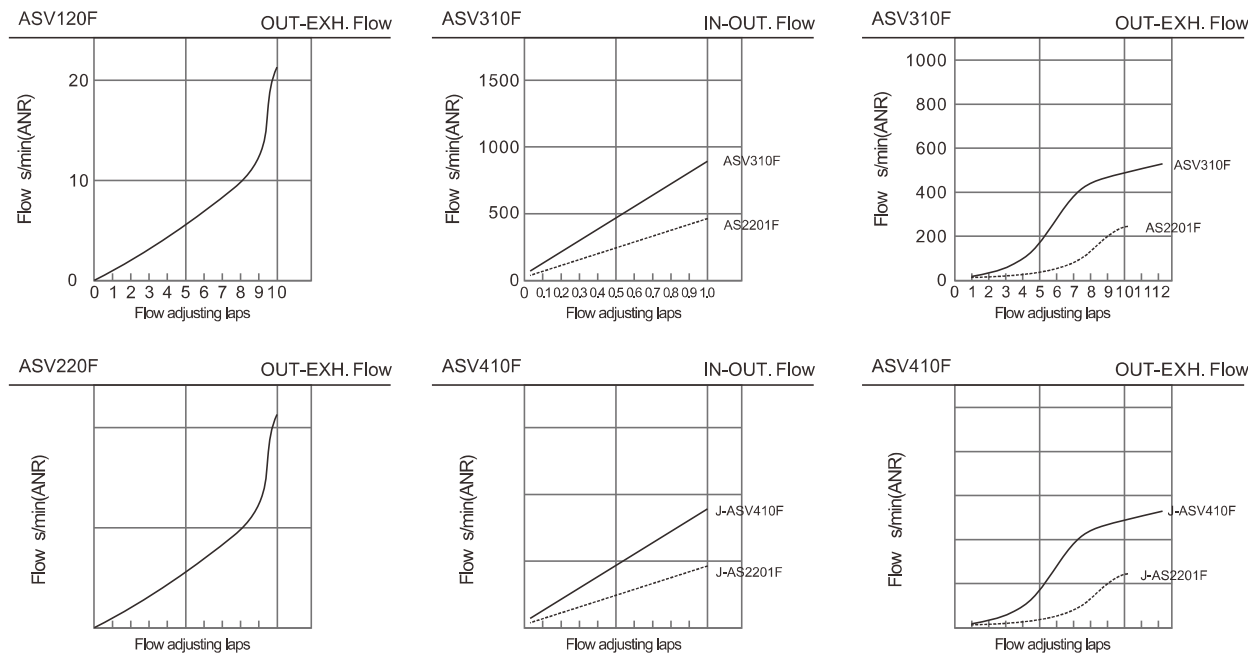
Graphic symbol



Specification

Model	ASV120F	ASV220F	ASV310F/410F	ASV510F
Working medium	Air			
Proof pressure	1.5MPa			
Max.operating pressure	1MPa			
Min.operating pressure	0.1MPa			
Ambient&liquid temperature	0~60°C(not frozen)			
Needle turning laps	10	8	12	15
Applicable hose	Nylon hose, PU hose, PVC hose			
Available nut	Hexagon nut	with splash guard nut and hexagon nut		

Flow characteristic diagram



KQ2 ( KJ )series white push-in tube fittings

Ordering Code:

KQ	2	H	08	-	02	(00)	S
Code		Code	Thread code				Available nut
KQ Common type		C Tube cap	M3	M3X0.5			Blank None
KJ Mini type		D Delta union	M5	M5X0.8			C with splash guard nut
		E Bulkhead	M6	M6X1.0			K Hexagon nut
		F Female adapter	01	1/8"			
		H Straight union	02	1/4"			
		L 90°elbow	03	3/8"			
		N Nipple	04	1/2"			
		P Plug					
		R Plug-in reducer					
		S Hex.socket head					
		T Tee branch					
		U Y branch					
		V Universal male elbow					
		W Extended plug-in elbow					
		X Plug-in Y branch					
		Y Male run tee					
		Z Branch universal male elbow					
		LE Bulkhead 90°elbow	03	Φ3			
		LF Female 90°elbow	23	Φ3.2			
		LU Branch union elbow	04	Φ4			
		VD Double universal male elbow	06	Φ6			
		VF Universal female elbow	08	Φ8			
		VS Hex.socket head universal male elbow	10	Φ10			
		VT Triple universal male elbow	12	Φ12			
		TW Cross	16	Φ16			
		TX Reducing cross 1	00	equal dia.			
		TY Reducing cross 2	99	equal dia. plug-in			
		TZ Reducing cross 3					
		UD Five way adapter					
		ZD Double branch universal male elbow					
		ZF Branch universal female elbow					
		ZT Triple branch universal male elbow					
		XD Double plug-in Y branch					

Body color	
2	white
blank	black

Specification

Working medium	Air
Working pressure range	- 100kPa~1.0MPa
Proof pressure	3.0MPa(23°C)
Ambient&liquid temperature	- 5~60°C For water: 0~40°C (not freezing)

Structure patent:

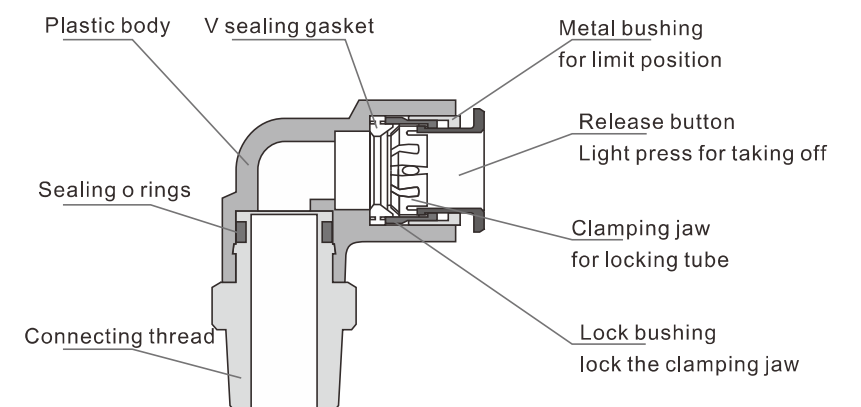
New name : Push-in fitting locating device

Patent No. : ZL 2013 2 0430595.5

Summary:

The new utility patent discloses a kind of quick push-in fittings.The valve body includes the thread and adapts to closed joints provided in the housing.A clamping jaw close to the joint housing.The quick connector positioning device of this utility model has a simple structure,and is easy to be installed and produced, and effectively

KQ2L(for example)



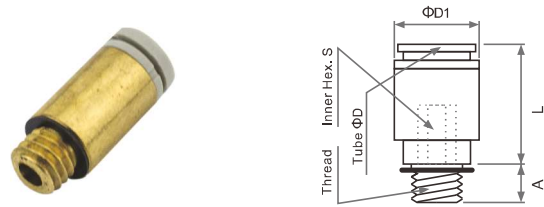
KJ series mini type push-in fittings

KJH Male straight



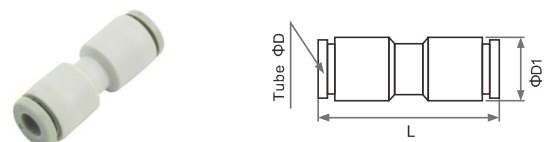
Model	ΦD	Thread	A	Hex. S	L
KJH03-M3	Φ3	M3X0.5	3.1	7	14.5
KJH03-M5		M5X0.8	4	7	14.5
KJH03-M6		M6X1.0	4.8	8	14.5
KJH03-01S		1/8"	7.5	10	12
KJH23-M3	Φ3.2	M3X0.5	3.1	7	13.8
KJH23-M5		M5X0.8	4	7	13.8
KJH23-M6		M6X1.0	4.8	8	13.8
KJH23-01S		1/8"	7.5	10	11.8
KJH04-M3	Φ4	M3X0.5	3.1	7	13.8
KJH04-M5		M5X0.8	4	7	13.8
KJH04-M6		M6X1.0	4.8	8	13.8
KJH04-01S		1/8"	7.5	10	11.8
KJH06-M5	Φ6	M5X0.8	4	7	15.3
KJH06-M6		M6X1.0	4.8	8	16.2
KJH06-01S		1/8"	7.5	10	12.3

KJS Hex.socket head male round straight



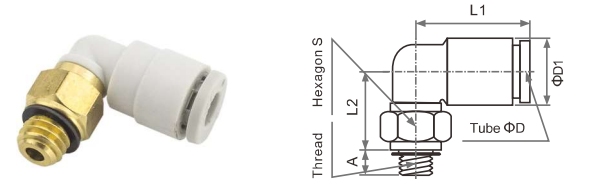
Model	ΦD	Thread	A	Inner Hex. S	L	ΦD1
KJS03-M3	Φ3	M3X0.5	3.1	1.5	14.2	7
KJS03-M5		M5X0.8	4	2	13.6	
KJSH23-M3	Φ3.2	M3X0.5	3.1	1.5	14.2	7
KJS23-M5		M5X0.8	4	2	13.6	
KJS04-M3	Φ4	M3X0.5	3.1	1.5	13.3	8
KJS04-M5		M5X0.8	4	2	15.3	
KJS04-M6		M6X1.0	4.8	2.5	14.3	
KJS04-01S		1/8"	7.5	4	12.5	
KJS06-M5	Φ6	M5X0.8	4	2	15.3	10
KJS06-M6		M6X1.0	4.8	2.5	14.3	
KJS06-01S		1/8"	7.5	4	12.5	

KJH Straight union



Model	ΦD	ΦD1	L
KJH03-00	Φ3	8.6	26.3
KJH23-00	Φ3.2	8.6	26.3
KJH04-00	Φ4	9.6	26.3
KJH06-00	Φ6	11.8	28

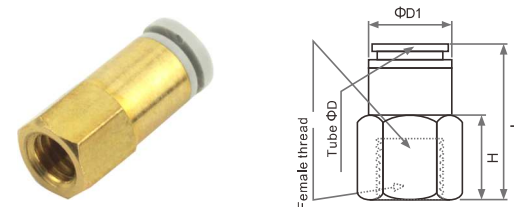
KJL Male 90°elbow



Available color for release button ● Available color for body ●

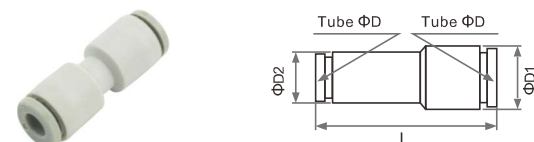
Model	ΦD	Thread	A	S	L1	L2	ΦD1
KJL03-M3	Φ3	M3X0.5	3.1	7	15.3	10.3	8.8
KJL03-M5		M5X0.8	4	7			
KJL03-M6		M6X1.0	4.8	8			
KJL03-01S		1/8"	7.5	10			
KJL23-M3	Φ3.2	M3X0.5	3.1	7	16	10.8	9.6
KJL23-M5		M5X0.8	4	7			
KJL23-M6		M6X1.0	4.8	8			
KJL23-01S		1/8"	7.5	10			
KJL04-M3	Φ4	M3X0.5	3.1	7	15.5	11.3	11.8
KJL04-M5		M5X0.8	4	7			
KJL04-M6		M6X1.0	4.8	8			
KJL04-01S		1/8"	7.5	10			
KJL06-M5	Φ6	M5X0.8	4	7	16.5	11.6	18
KJL06-M6		M6X1.0	4.8	8			
KJL06-01S		1/8"	7.5	10			

KJF Female straight



Model	ΦD	Female thread	Hex. S	H	L
KJF03-M3	Φ3	M3X0.5	7	6.8	16.4
KJF03-M5		M5X0.8	7	7.5	18.3
KJF23-M3	Φ3.2	M3X0.5	7	6.8	16.4
KJF23-M5		M5X0.8	7	7.5	18.3
KJF04-M3	Φ4	M3X0.5	8	6.8	19.3
KJF04-M5		M5X0.8	8	7.5	18.7
KJF04-M6		M6X1.0	8	7.5	19
KJF04-01S		1/8"	14	11	23.3
KJF06-M5	Φ6	M5X0.8	10	7.5	19.5
KJF06-M6		M6X1.0	10	7.5	18.5
KJF06-01S		1/8"	14	11	18.5

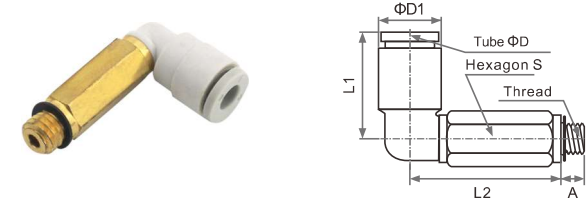
KJH Reducing straight



Model	ΦD	Φd	ΦD1	ΦD2	L
KJH03-04	Φ3	Φ4	9.6	8.6	27
KJH03-06		Φ6	11.8	8.6	27.5
KJH23-04	Φ3.2	Φ4	9.6	8.6	27
KJH23-06		Φ6	11.8	8.6	27.5
KJH04-06	Φ4	Φ6	11.8	9.6	28.7

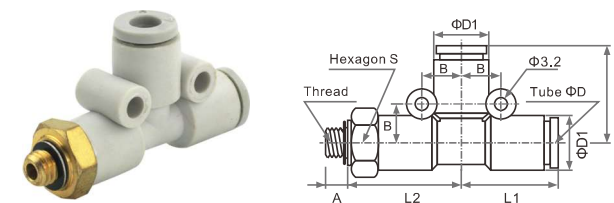
KJ series mini type push-in fittings

KJW Extended male elbow



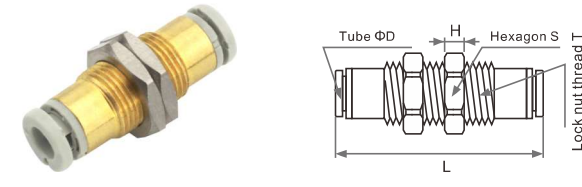
Model	ΦD	Thread	A	S	L2	L1	ΦD1
KJW03-M3	Φ3	M3X0.5	3.1	7	19.4	15.3	8.8
KJW03-M5		M5X0.8	4	7	21.2		
KJW03-M6		M6X1.0	4.8	8	21.2		
KJW03-01S		1/8"	7.5	10	17.7		
KJW23-M3	Φ3.2	M3X0.5	3.1	7	19.4	16	9.6
KJW23-M5		M5X0.8	4	7	21.2		
KJW23-M6		M6X1.0	4.8	8	21.2		
KJW23-01S		1/8"	7.5	10	17.7		
KJW04-M3	Φ4	M3X0.5	3.1	7	19.9	15.5	11.8
KJW04-M5		M5X0.8	4	7	21.7		
KJW04-M6		M6X1.0	4.8	8	21.7		
KJW04-01S		1/8"	7.5	10	18.2		
KJW06-M5	Φ6	M5X0.8	4	7	22.7	18	11.8
KJW06-M6		M6X1.0	4.8	8	22.7		
KJW06-01S		1/8"	7.5	10	21.2		

KJY Male Run Tee



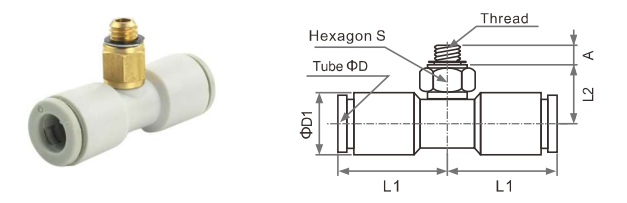
Model	ΦD	Thread	A	S	L2	L1	ΦD1	B
KJY04-M3	Φ4	M3X0.5	3.1	10	18.8	13.5	9.6	6.3
KJY04-M5		M5X0.8	4	19.1				
KJY04-M6		M6X1.0	4.8	19.1				
KJY04-01S		1/8"	7.5	19.8				
KJY06-M5	Φ6	M5X0.8	4	12	19.1	15	11.8	7.3
KJY06-M6		M6X1.0	4.8	19.1				
KJY06-01S		1/8"	7.5	19.8				

KJE Bulkhead fitting



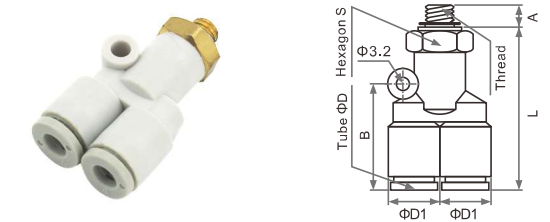
Model	ΦD	Thread T	S	H	L
KJE03-00	Φ3	M8X0.75	10	2	26
KJE23-00	Φ3.2	M8X0.75	10	2	26
KJE04-00	Φ4	M9X0.75	12	2	26
KJE06-00	Φ6	M11X0.75	14	2	27.7

KJT Male Tee branch



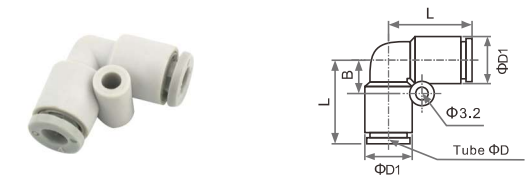
Model	ΦD	Thread	A	S	L2	L1	ΦD1
KJT03-M3	Φ3	M3X0.5	3.1	7	10	15.3	8.8
KJT03-M5		M5X0.8	4	7	10		
KJT03-M6		M6X1.0	4.8	8	10		
KJT03-01S		1/8"	7.5	10	7.8		
KJT23-M3	Φ3.2	M3X0.5	3.1	7	10	15.6	9.6
KJT23-M5		M5X0.8	4	7	10		
KJT23-M6		M6X1.0	4.8	8	10		
KJT23-01S		1/8"	7.5	10	7.8		
KJT04-M3	Φ4	M3X0.5	3.1	7	10.5	17.5	11.8
KJT04-M5		M5X0.8	4	7	10.5		
KJT04-M6		M6X1.0	4.8	8	10.5		
KJT04-01S		1/8"	7.5	10	8.5		
KJT06-M5	Φ6	M5X0.8	4	7	11.8	17.5	11.8
KJT06-M6		M6X1.0	4.8	8	11.8		
KJT06-01S		1/8"	7.5	10	10		

KJU Male Y branch



Model	ΦD	Thread	A	S	L	ΦD1	B
KJU04-M3	Φ4	M3X0.5	3.1	10	29.3	9.6	18
KJU04-M5		M5X0.8	4	29.3			
KJU04-M6		M6X1.0	4.8	29.3			
KJU04-01S		1/8"	7.5	30			
KJU06-M5	Φ6	M5X0.8	4	12	33.1	11.8	19.5
KJU06-M6		M6X1.0	4.8	33.1			
KJU06-01S		1/8"	7.5	33.8			

KJL 90° elbow

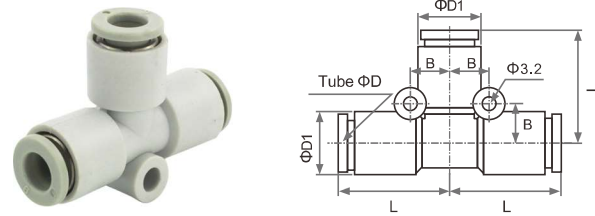


Model	ΦD	L	ΦD1	B
KJL03-00	Φ3	15	8.5	5.8
KJL23-00	Φ3.2	15	8.5	5.8
KJL04-00	Φ4	15.8	9.6	6.3
KJL06-00	Φ6	17.1	11.8	7.3



**KJ series**  
mini type push-in fittings

**KJT Tee branch**



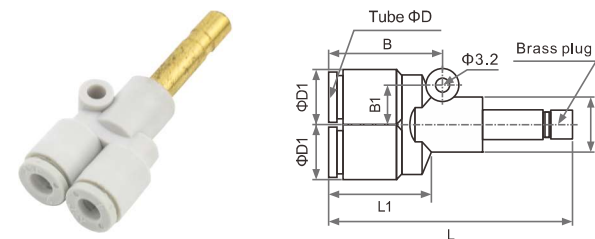
Model	ΦD	L	ΦD1	B
KJT04-00	Φ4	15.8	9.6	6.3
KJT06-00	Φ6	17.1	11.8	7.3

**KJU Y branch**



Model	ΦD	L	L1	ΦD1	B	B1
KJU04-00	Φ4	27	18	9.6	17.7	5.8
KJU06-00	Φ6	32.4	17.5	11.8	—	—

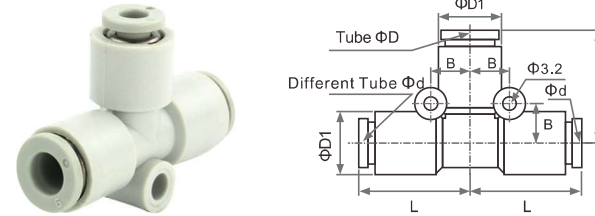
**KJU Equal plug-in Y branch**



Model	ΦD	Φd	L	L1	ΦD1	B	B1
KJU04-99	Φ4	Φ4	43.3	26	9.6	17.7	5.8
KJU06-99	Φ6	Φ6	50.9	29.8	11.8	—	—

Material of brass plug: Brass C3604

**KJT Reducing Tee branch**



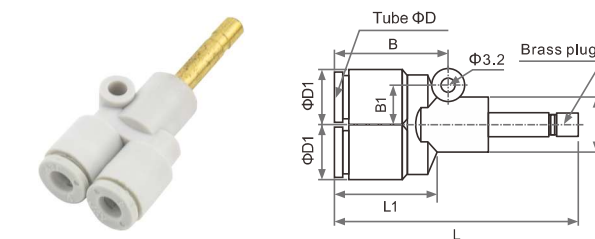
Model	ΦD	Φd	L	ΦD1	B
KJT04-06	Φ6	Φ4	17.1	11.8	7.3

**KJU Reducing Y branch**



Model	ΦD	Φd	L	L1	ΦD1
KJU04-06	Φ6	Φ4	32.4	17.5	11.8

**KJX Reducing plug-in Y branch**

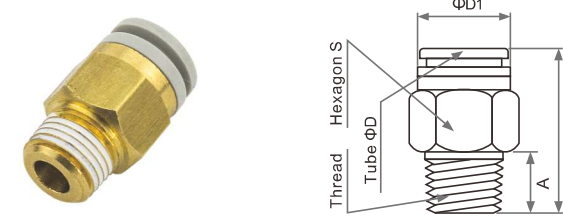


Model	ΦD	Φd	L	L1	ΦD1	B	B1
KJX04-06	Φ4	Φ3	43.3	26	9.6	17.7	5.8
KJX04-06	Φ4	Φ3.2	43.3	26	9.6	17.7	5.8
KJX04-06	Φ4	Φ6	43.3	26	9.6	17.7	5.8
KJX06-04	Φ6	Φ4	50.9	29.8	11.8	—	—

Material of brass plug: Brass C3604

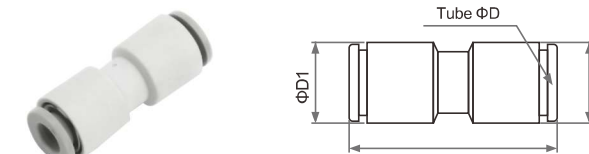
**KQ2 series push-in tube fittings**

**KQ2H Male straight**



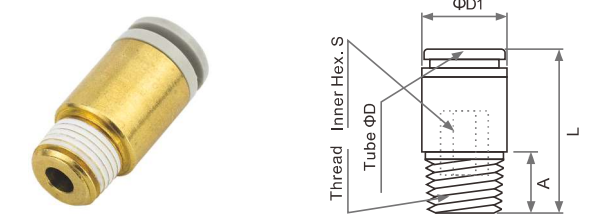
Model	ΦD	Thread	A	L	S	ΦD1
KQ2H04-M5	Φ4	M5x0.8	4	17	8	7.9
KQ2H04-M6		M6x1.0	4.8	18	—	—
KQ2H04-01S		1/8"	7.5	22	10	9.9
KQ2H04-02S		1/4"	10.5	19.5	14	—
KQ2H06-M5	Φ6	M5x0.8	4	17.8	10	9.9
KQ2H06-M6		M6x1.0	4.8	19	—	—
KQ2H06-01S		1/8"	7.5	22.5	12	11.9
KQ2H06-02S		1/4"	10.5	23	14	—
KQ2H06-03S	3/8"	11	22	17	—	—
KQ2H08-01S	Φ8	1/8"	7.5	28	14	13.8
KQ2H08-02S		1/4"	10.5	26.5	—	—
KQ2H08-03S		3/8"	11	22	—	—
KQ2H10-01S	Φ10	1/8"	7.5	30	17	16.9
KQ2H10-02S		1/4"	10.5	33.5	—	—
KQ2H10-03S		3/8"	11	29	—	—
KQ2H10-04S		1/2"	14.2	27	22	—
KQ2H12-02S	Φ12	1/4"	10.5	34.5	19	18.9
KQ2H12-03S		3/8"	11	30	—	—
KQ2H12-04S		1/2"	14.2	30	22	—
KQ2H16-02S	Φ16	1/4"	10.5	39.5	24	25.7
KQ2H16-03S		3/8"	11	39.5	—	—
KQ2H16-04S		1/2"	14.2	35.5	—	—

**KQ2H Straight union**



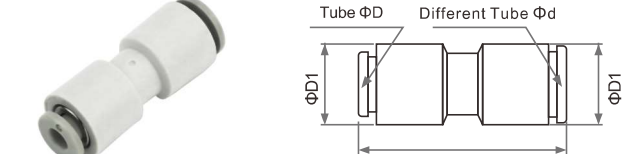
Model	ΦD	L	ΦD1
KQ2H04-00	Φ4	32.5	11
KQ2H06-00	Φ6	34.5	13.2
KQ2H08-00	Φ8	38.5	15.6
KQ2H10-00	Φ10	42.5	18.8
KQ2H12-00	Φ12	44.5	21.3
KQ2H16-00	Φ16	51.5	26.5

**KQ2S Hex.socket head male round straight**



Model	ΦD	Thread	A	L	S	ΦD1
KQ2S04-M5	Φ4	M5x0.8	4	18.7	2.5	8
KQ2S04-M6		M6x1.0	4.8	18.2	—	—
KQ2S04-01S		1/8"	7.5	23	3	9.9
KQ2S04-02S		1/4"	10.5	21	—	11.9
KQ2S06-M5	Φ6	M5x0.8	4	19.5	2.5	10
KQ2S06-M6		M6x1.0	4.8	19.1	3	—
KQ2S06-01S		1/8"	7.5	24	4	11.9
KQ2S06-02S		1/4"	10.5	24	—	—
KQ2S08-01S	Φ8	1/8"	7.5	28	5	13.8
KQ2S08-02S		1/4"	10.5	25.5	6	—
KQ2S08-03S		3/8"	11	27.5	—	—
KQ2S10-01S	Φ10	1/8"	7.5	30	5	16.9
KQ2S10-02S		1/4"	10.5	27.5	6	—
KQ2S10-03S		3/8"	11	27.5	—	—
KQ2S10-04S		1/2"	14.2	28	8	22
KQ2S12-02S	Φ12	1/4"	10.5	33.5	—	18.9
KQ2S12-03S		3/8"	11	29	10	—
KQ2S12-04S		1/2"	14.2	28	—	22
KQ2S16-02S	Φ16	1/4"	10.5	39	8	—
KQ2S16-03S		3/8"	11	39	10	25.7
KQ2S16-04S		1/2"	14.2	35	12	—

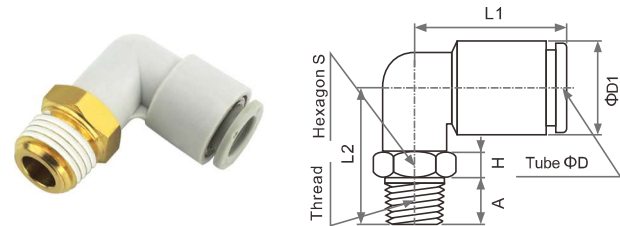
**KQ2H Reducing straight**



Model	ΦD	Φd	L	ΦD1
KQ2H04-06	Φ4	Φ6	34.5	13.2
KQ2H04-08		Φ8	38.5	15.6
KQ2H06-08	Φ6	Φ8	38.5	15.6
KQ2H06-10		Φ10	42.5	18.8
KQ2H08-10	Φ8	Φ10	42.5	18.8
KQ2H08-12		Φ12	44.5	21.3
KQ2H10-12	Φ10	Φ12	44.5	21.3
KQ2H12-16		Φ16	51.5	26.5

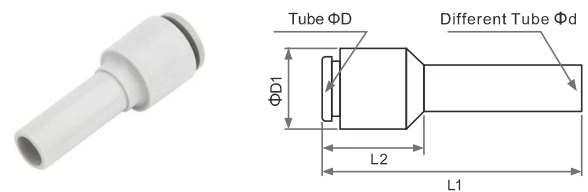
KQ2 series  
push-in tube fittings

KQ2L Male elbow



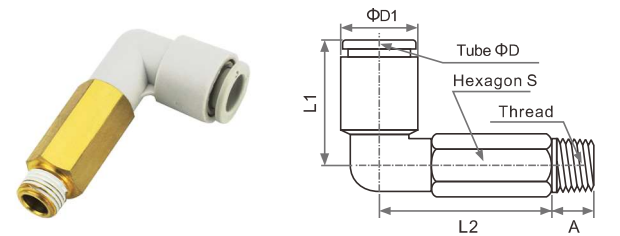
Model	ΦD	Thread	A	H	S	L2	L1	ΦD1
KQ2L04-M5	Φ4	M5x0.8	4	7	3.3	13.7	15.6	9.3
KQ2L04-M6		M6x1.0	4.8	8	3.3	14.7		
KQ2L04-01S		1/8"	7.5	10	4	22		
KQ2L04-02S		1/4"	10.5	14	5.5	26		
KQ2L06-M5	Φ6	M5x0.8	4	7	3.3	14.7	16.1	11.6
KQ2L06-M6		M6x1.0	4.8	8	3.3	15.7		
KQ2L06-01S		1/8"	7.5	10	4	23		
KQ2L06-02S		1/4"	10.5	14	5.5	27		
KQ2L06-03S	3/8"	11	17	6	29	20	13.2	
KQ2L08-01S	Φ8	1/8"	7.5	12	4	24	23	15.6
KQ2L08-02S		1/4"	10.5	14	5.5	28.5		
KQ2L08-03S		3/8"	11	17	6	30.5		
KQ2L10-01S	Φ10	1/8"	7.5	17	4	27	26.5	18.8
KQ2L10-02S		1/4"	10.5	17	5.5	30		
KQ2L10-03S		3/8"	11	17	6	32		
KQ2L10-04S		1/2"	14.2	22	7	36		
KQ2L12-02S	Φ12	1/4"	10.5	17	5.5	31	28.5	21.3
KQ2L12-03S		3/8"	11	17	6	33		
KQ2L12-04S		1/2"	14.2	22	7	37		
KQ2L16-02S	Φ16	1/4"	10.5	22	5.5	36	34	26.5
KQ2L16-03S		3/8"	11	22	6	38		
KQ2L16-04S		1/2"	14.2	22	7	41		

KQ2R Plug-in reducer



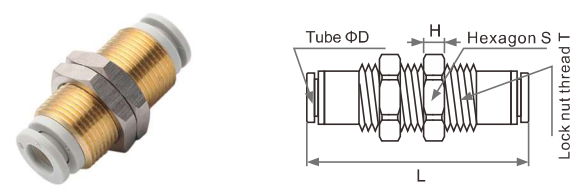
Model	ΦD	Φd	L1	L2	ΦD1
KQ2R04-06	Φ4	Φ6	31.5	13.7	11
KQ2R04-08		Φ8	31.5		
KQ2R04-10		Φ10	34.5		
KQ2R06-04	Φ6	Φ4	32	14	13.2
KQ2R06-08		Φ8	34		
KQ2R06-10		Φ10	36.5		
KQ2R06-12		Φ12	39		
KQ2R08-10	Φ8	Φ10	37.8	16.8	15.6
KQ2R08-12		Φ12	40.2		
KQ2R10-12	Φ10	Φ12	43.5	18	18.8

KQ2W Extended male elbow



Model	ΦD	Thread	A	S	L2	L1	ΦD1
KQ2W04-M5	Φ4	M5x0.8	4	10	30	18	11
KQ2W04-M6		M6x1.0	4.8	10	30		
KQ2W04-01S		1/8"	7.5	37.5			
KQ2W04-02S		1/4"	10.5	43.5			
KQ2W06-M5	Φ6	M5x0.8	4	10	30.5	20	13.2
KQ2W06-M6		M6x1.0	4.8	10	30.5		
KQ2W06-01S		1/8"	7.5	40			
KQ2W06-02S		1/4"	10.5	46			
KQ2W06-03S	3/8"	11	48	17	48	23	15.6
KQ2W08-01S	Φ8	1/8"	7.5	12	43.5	23	15.6
KQ2W08-02S		1/4"	10.5	49.5			
KQ2W08-03S		3/8"	11	51.5			
KQ2W10-01S	Φ10	1/8"	7.5	17	53.5	26.5	18.8
KQ2W10-02S		1/4"	10.5	56.5			
KQ2W10-03S		3/8"	11	58.5			
KQ2W10-04S		1/2"	14.2	65			
KQ2W12-02S	Φ12	1/4"	10.5	17	57.5	28.5	21.3
KQ2W12-03S		3/8"	11	59.5			
KQ2W12-04S		1/2"	14.2	66			
KQ2W16-02S	Φ16	1/4"	10.5	22	69	34	26.5
KQ2W16-03S		3/8"	11	69.5			
KQ2W16-04S		1/2"	14.2	75			

KQ2E Bulkhead fitting

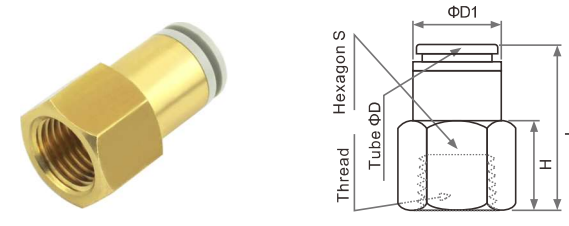


Model	ΦD	L	T	S	H
KQ2E04-00	Φ4	32.5	M12X1	14	3.5
KQ2E06-00	Φ6	34.5	M14X1	17	3.5
KQ2E08-00	Φ8	38	M16X1	19	3.5
KQ2E10-00	Φ10	42.5	M20X1	24	4.5
KQ2E12-00	Φ12	44	M22X1	27	4.5
KQ2E16-00	Φ16	51	M28X1.5	32	5.5

Diameter of mounting hole=Diameter of lock thread+0.5

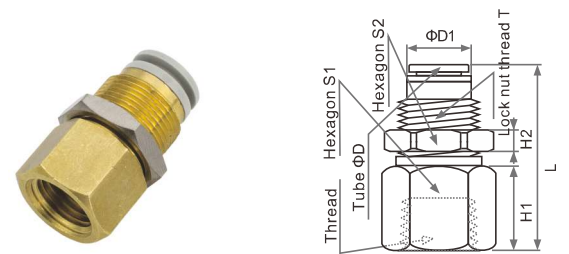
KQ2 series  
push-in tube fittings

KQ2F Female straight



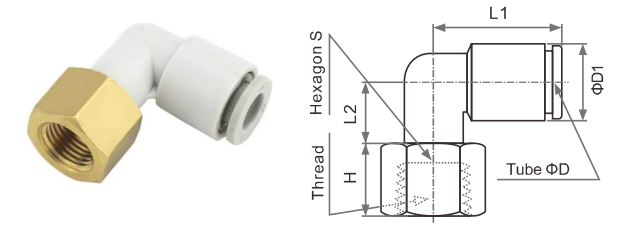
Model	ΦD	Thread	S	H	L	ΦD1
KQ2F04-M5	Φ4	M5x0.8	10	8	24	9.9
KQ2F04-01		1/8"	14	11	27	
KQ2F04-02		1/4"	17	14	31	
KQ2F06-M5	Φ6	M5x0.8	12	8	24	11.9
KQ2F06-01		1/8"	14	11	27.5	
KQ2F06-02		1/4"	17	17	31	
KQ2F06-03	3/8"	19	19	33.5	13.8	
KQ2F08-01	Φ8	1/8"	17	11	29	16.9
KQ2F08-02		1/4"	17	14.5	32.5	
KQ2F08-03		3/8"	19	16.2	33.5	
KQ2F10-01	Φ10	1/8"	17	13	31.5	18.9
KQ2F10-02		1/4"	17	16	34.5	
KQ2F10-03		3/8"	19	16.7	36.5	
KQ2F10-04		1/2"	24	22.5	41	
KQ2F12-02	Φ12	1/4"	19	12.6	35	25.7
KQ2F12-03		3/8"	19	15	37	
KQ2F12-04		1/2"	24	18.6	41	
KQ2F16-02	Φ16	1/4"	24	15	37	43
KQ2F16-03		3/8"	24	15	38	
KQ2F16-04		1/2"	24	19	43	

KQ2E Female bulkhead fitting



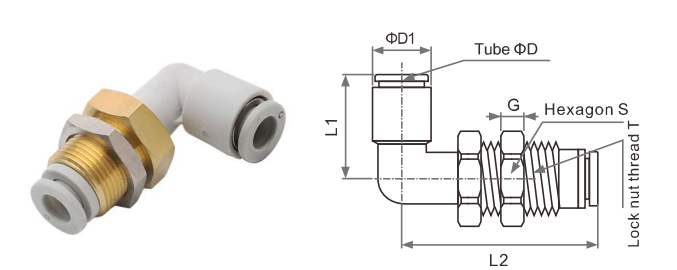
Model	ΦD	Thread	S1	H1	T	S2	H2	L
KQ2E04-M5	Φ4	M5x0.8	14	8	M12x1	14	3.5	24.5
KQ2E04-01		1/8"	14	11	M12x1	14	3.5	27.5
KQ2E04-02		1/4"	17	15	M12x1	14	3.5	31
KQ2E06-01	Φ6	1/8"	17	11	M14x1	17	3.5	28
KQ2E06-02		1/4"	17	15	M14x1	17	3.5	31.5
KQ2E06-03		3/8"	19	17	M14x1	17	3.5	33.5
KQ2E08-01	Φ8	1/8"	17	7.5	M16x1	19	3.5	27.5
KQ2E08-02		1/4"	17	13	M16x1	19	3.5	33
KQ2E08-03		3/8"	19	15	M16x1	19	3.5	35
KQ2E10-02	Φ10	1/4"	22	12.5	M20x1	24	4.5	34.5
KQ2E10-03		3/8"	22	15	M20x1	24	4.5	36.5
KQ2E12-03	Φ12	3/8"	24	14	M22x1	27	4.5	37
KQ2E12-04		1/2"	24	18	M22x1	27	4.5	41
KQ2E16-03	Φ16	3/8"	30	14	M28x1.5	32	5.5	40
KQ2E16-04		1/2"	30	18	M28x1.5	32	5.5	44

KQ2LF Female elbow



Model	ΦD	Thread	S	H	L1	L2	ΦD1
KQ2LF04-M5	Φ4	M5x0.8	10	5	18	11.6	11
KQ2LF04-01		1/8"	14	12	18	11.6	11
KQ2LF04-02		1/4"	17	14.4	18	11.6	11
KQ2LF06-M5	Φ6	M5x0.8	12	5	20	12.4	13.2
KQ2LF06-01		1/8"	14	12	20	12.4	13.2
KQ2LF06-02		1/4"	17	14.4	20	12.4	13.2
KQ2LF06-03	3/8"	19	17.9	20	12.4	13.2	15.6
KQ2LF08-01	Φ8	1/8"	17	10.7	23	13.7	15.6
KQ2LF08-02		1/4"	17	14.4	23	13.7	15.6
KQ2LF08-03		3/8"	19	15	23	13.7	15.6
KQ2LF10-01	Φ10	1/8"	17	10.7	26.5	15	18.8
KQ2LF10-02		1/4"	17	14.4	26.5	15	18.8
KQ2LF10-03		3/8"	19	15	26.5	15	18.8
KQ2LF10-04		1/2"	24	21.4	26.5	15	18.8
KQ2LF12-02	Φ12	1/4"	19	14.4	28.5	16.2	21.3
KQ2LF12-03		3/8"	19	15	28.5	16.2	21.3
KQ2LF12-04		1/2"	24	21.8	28.5	16.2	21.3
KQ2LF16-02	Φ16	1/4"	24	14.4	34	25.3	26.5
KQ2LF16-03		3/8"	24	15	34	25.3	26.5
KQ2LF16-04		1/2"	24	21.8	34	25.3	26.5

KQ2LE Bulkhead elbow



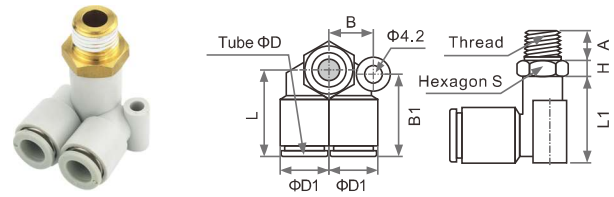
Model	ΦD	L1	L2	T	S	H	ΦD1
KQ2LE04-00	Φ4	18.5	31	M12X1	14	3.5	11
KQ2LE06-00	Φ6	20.5	34	M14X1	17	3.5	13.2
KQ2LE08-00	Φ8	23.5	38.5	M16X1	19	3.5	15.8
KQ2LE10-00	Φ10	26.5	43.5	M20X1	24	4.5	18.8
KQ2LE12-00	Φ12	28.5	45.5	M22X1	27	4.5	21.3
KQ2LE16-00	Φ16	34	50.5	M28X1.5	32	5.5	26.9

Diameter of mounting hole=Diameter of lock thread+0.5

**KQ2 series**  
push-in tube fittings

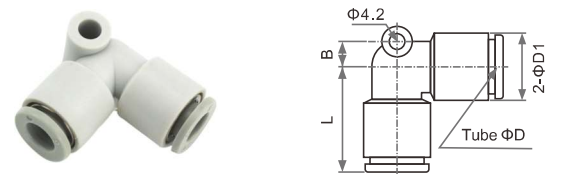
Available color for release button ● Available color for body ●

**KQ2LU Branch male elbow**



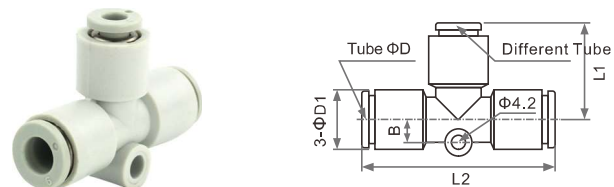
Model	ΦD	Thread	A	S	H	L	L1	B	B1	ΦD1
KQ2LU04-M5	Φ4	M5x0.8	4	3.3	3.3	18	22.5	10	18.5	11
KQ2LU04-M6		M6x1.0	4.8	3.3						
KQ2LU04-01S		1/8"	7.5	4						
KQ2LU04-02S	1/4"	10.5	5.5	4						
KQ2LU06-M5	Φ6	M5x0.8	4	3.3	3.3	21	22.5	12	20.5	13.2
KQ2LU06-M6		M6x1.0	4.8	3.3						
KQ2LU06-01S		1/8"	7.5	4						
KQ2LU06-02S	1/4"	10.5	5.5	4						
KQ2LU06-03S	3/8"	11	6	4						
KQ2LU08-01S	Φ8	1/8"	7.5	4	3.3	24	30	14	24.5	15.6
KQ2LU08-02S		1/4"	10.5	5.5						
KQ2LU08-03S		3/8"	11	6						
KQ2LU10-01S	Φ10	1/8"	7.5	4	3.3	27	34.5	16	28	18.8
KQ2LU10-02S		1/4"	10.5	5.5						
KQ2LU10-03S		3/8"	11	6						
KQ2LU10-04S		1/2"	14.2	7						
KQ2LU12-02S	Φ12	1/4"	10.5	5.5	3.3	29	38	18	30	21.3
KQ2LU12-03S		3/8"	11	6						
KQ2LU12-04S		1/2"	14.2	7						

**KQ2L 90°elbow union**



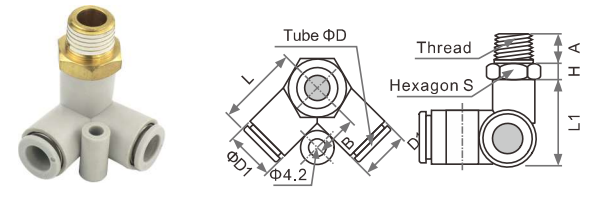
Model	ΦD	L	B	ΦD1
KQ2L04-00	Φ4	18	4.5	11
KQ2L06-00	Φ6	20	5.3	13.2
KQ2L08-00	Φ8	23	6	15.6
KQ2L10-00	Φ10	26.5	6.8	18.8
KQ2L12-00	Φ12	28.5	7.5	21.3
KQ2L16-00	Φ16	34	10	26.5

**KQ2T Reducing Tee branch 1**



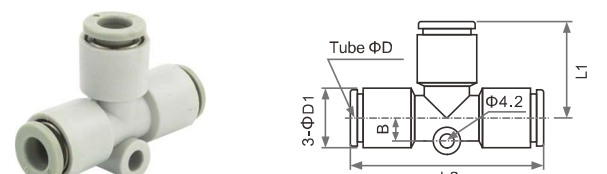
Model	ΦD	Φd	L1	L2	B	ΦD1
KQ2T06-04	Φ6	Φ4	20	40	5.3	13.2
KQ2T08-06	Φ8	Φ6	23	46	6	15.6
KQ2T10-08	Φ10	Φ8	26.5	53	6.8	18.8
KQ2T12-10	Φ12	Φ10	28.5	57	7.5	21.3
KQ2T16-12	Φ16	Φ12	34	68	10	26.5

**KQ2D Male delta union**



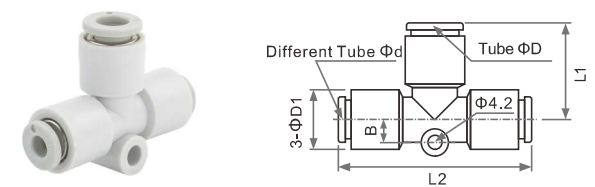
Model	ΦD	Thread	A	S	H	L	L1	B	ΦD1
KQ2D04-M5	Φ4	M5x0.8	4	3.3	3.3	18.5	17	8.7	11
KQ2D04-M6		M6x1.0	4.8	3.3					
KQ2D04-01S		1/8"	7.5	4					
KQ2D04-02S	1/4"	10.5	5.5	4					
KQ2D06-M5	Φ6	M5x0.8	4	3.3	3.3	20.5	18.5	9.9	13.2
KQ2D06-M6		M6x1.0	4.8	3.3					
KQ2D06-01S		1/8"	7.5	4					
KQ2D06-02S	1/4"	10.5	5.5	4					
KQ2D06-03S	3/8"	11	6	4					
KQ2D08-01S	Φ8	1/8"	7.5	4	3.3	23.5	21.5	11.1	15.6
KQ2D08-02S		1/4"	10.5	5.5					
KQ2D08-03S		3/8"	11	6					
KQ2D10-01S	Φ10	1/8"	7.5	4	3.3	26.5	24.5	12.8	18.8
KQ2D10-02S		1/4"	10.5	5.5					
KQ2D10-03S		3/8"	11	6					
KQ2D10-04S		1/2"	14.2	7					
KQ2D12-02S	Φ12	1/4"	10.5	5.5	3.3	28.5	26.5	13.9	21.3
KQ2D12-03S		3/8"	11	6					
KQ2D12-04S		1/2"	14.2	7					

**KQ2T Tee branch**



Model	ΦD	L1	L2	B	ΦD1
KQ2T04-00	Φ4	18	36	4.5	11
KQ2T06-00	Φ6	20	40	5.3	13.2
KQ2T08-00	Φ8	23	46	6	15.6
KQ2T10-00	Φ10	26.5	53	6.8	18.8
KQ2T12-00	Φ12	28.5	57	7.5	21.3
KQ2T16-00	Φ16	34	68	10	26.5

**KQ2T Reducing Tee branch 2**

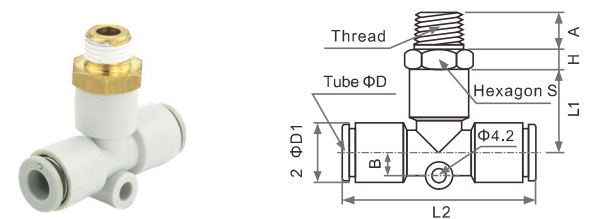


Model	ΦD	Φd	L1	L2	B	ΦD1
KQ2T04-06	Φ6	Φ4	20	40	5.3	13.2
KQ2T06-08	Φ8	Φ6	23	46	6	15.6
KQ2T08-10	Φ10	Φ8	26.5	53	6.8	18.8
KQ2T10-12	Φ12	Φ10	28.5	57	7.5	21.3
KQ2T12-16	Φ16	Φ12	34	68	10	26.5

**KQ2 series**  
push-in tube fittings

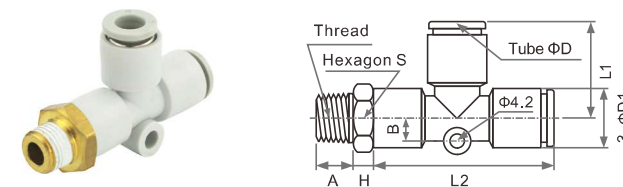
Available color for release button ● Available color for body ●

**KQ2T Male Tee branch**



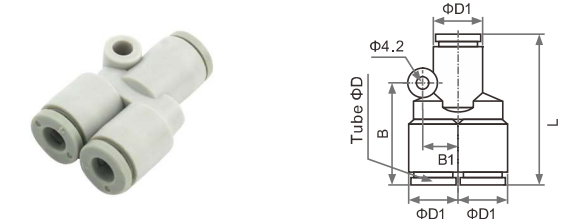
Model	ΦD	Thread	A	S	H	L1	L2	B	ΦD1
KQ2T04-M5	Φ4	M5x0.8	4	3.3	3.3	16	36	4.5	11
KQ2T04-M6		M6x1.0	4.8	3.3					
KQ2T04-01S		1/8"	7.5	4					
KQ2T04-02S	1/4"	10.5	5.5	4					
KQ2T06-M5	Φ6	M5x0.8	4	3.3	3.3	18	40	5.3	13.2
KQ2T06-M6		M6x1.0	4.8	3.3					
KQ2T06-01S		1/8"	7.5	4					
KQ2T06-02S	1/4"	10.5	5.5	4					
KQ2T06-03S	3/8"	11	6	4					
KQ2T08-01S	Φ8	1/8"	7.5	4	3.3	21	46	6	15.6
KQ2T08-02S		1/4"	10.5	5.5					
KQ2T08-03S		3/8"	11	6					
KQ2T10-01S	Φ10	1/8"	7.5	4	3.3	25	53	6.8	18.8
KQ2T10-02S		1/4"	10.5	5.5					
KQ2T10-03S		3/8"	11	6					
KQ2T10-04S		1/2"	14.2	7					
KQ2T12-02S	Φ12	1/4"	10.5	5.5	3.3	27	57	5.7	21.3
KQ2T12-03S		3/8"	11	6					
KQ2T12-04S		1/2"	14.2	7					
KQ2T16-02S	Φ16	1/4"	10.5	5.5	3.3	32	68	10	26.5
KQ2T16-03S		3/8"	11	6					
KQ2T16-04S		1/2"	14.2	7					

**KQ2Y Male Run Tee**



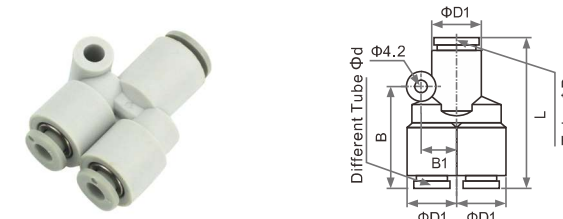
Model	ΦD	Thread	A	S	H	L1	L2	B	ΦD1
KQ2Y04-M5	Φ4	M5x0.8	4	3.3	3.3	18	34	4.5	11
KQ2Y04-M6		M6x1.0	4.8	3.3					
KQ2Y04-01S		1/8"	7.5	4					
KQ2Y04-02S	1/4"	10.5	5.5	4					
KQ2Y06-M5	Φ6	M5x0.8	4	3.3	3.3	21	37	5.3	13.2
KQ2Y06-M6		M6x1.0	4.8	3.3					
KQ2Y06-01S		1/8"	7.5	4					
KQ2Y06-02S	1/4"	10.5	5.5	4					
KQ2Y06-03S	3/8"	11	6	4					
KQ2Y08-01S	Φ8	1/8"	7.5	4	3.3	24	43	6	15.6
KQ2Y08-02S		1/4"	10.5	5.5					
KQ2Y08-03S		3/8"	11	6					
KQ2Y10-01S	Φ10	1/8"	7.5	4	3.3	27	49	6.8	18.8
KQ2Y10-02S		1/4"	10.5	5.5					
KQ2Y10-03S		3/8"	11	6					
KQ2Y10-04S		1/2"	14.2	7					
KQ2Y12-02S	Φ12	1/4"	10.5	5.5	3.3	29	53	7.5	21.3
KQ2Y12-03S		3/8"	11	6					
KQ2Y12-04S		1/2"	14.2	7					

**KQ2U Y branch**



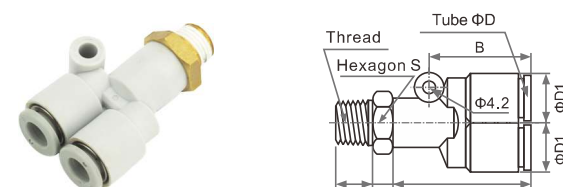
Model	ΦD	L	B	ΦD1
KQ2U04-00	Φ4	34	18	10.4
KQ2U06-00	Φ6	37	20	12.8
KQ2U08-00	Φ8	42.5	24.5	15.2
KQ2U10-00	Φ10	48	27.5	18.5
KQ2U12-00	Φ12	51	30	20.9

**KQ2U Reducing Y branch**



Model	ΦD	Φd	L	B	ΦD1
KQ2U04-06	Φ6	Φ4	34	18	10.4
KQ2U06-08	Φ8	Φ6	37	20	12.8
KQ2U08-10	Φ10	Φ8	42.5	24.5	15.2
KQ2U10-12	Φ12	Φ10	48	27.5	18.5

**KQ2U Male Y branch**

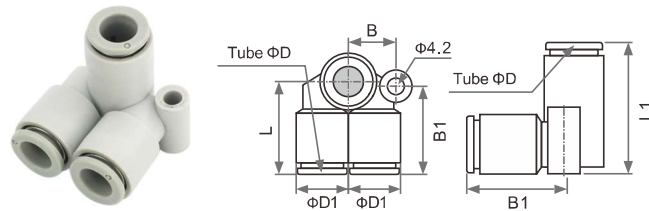


Model	ΦD	Thread	A	S	H	L	B	ΦD1
KQ2U04-M5	Φ4	M5x0.8	4	3.3	3.3	18	34	11
KQ2U04-01S		1/8"	7.5	4				
KQ2U04-02S		1/4"	10.5	5.5				
KQ2U06-03S	3/8"	11	6	4				
KQ2U06-M5	Φ6	M5x0.8	4	3.3	3.3	21	37	13.2
KQ2U06-01S		1/8"	7.5	4				
KQ2U06-02S		1/4"	10.5	5.5				
KQ2U06-03S	3/8"	11	6	4				
KQ2U08-01S	Φ8	1/8"	7.5	4	3.3	24	43	15.6
KQ2U08-02S		1/4"	10.5	5.5				
KQ2U08-03S		3/8"	11	6				
KQ2U10-01S	Φ10	1/8"	7.5	4	3.3	27	49	18.8
KQ2U10-02S		1/4"	10.5	5.5				
KQ2U10-03S		3/8"	11	6				
KQ2U10-04S		1/2"	14.2	7				
KQ2U12-02S	Φ12	1/4"	10.5	5.5	3.3	29	53	21.3
KQ2U12-03S		3/8"	11	6				
KQ2U12-04S		1/2"	14.2	7				



**KQ2 series**  
push-in tube fittings

**KQ2LU Branch union elbow**



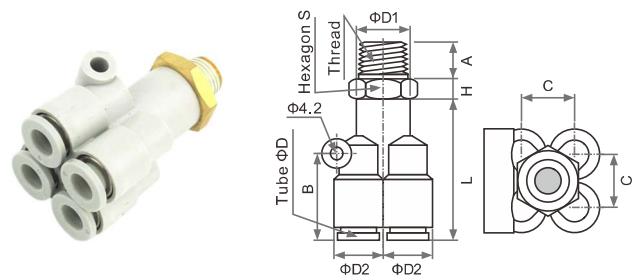
Model	ΦD	L	L1	B	B1	ΦD1
KQ2LU04-00	Φ4	18.5	24	10	18.5	11
KQ2LU06-00	Φ6	21	27.5	12	20.5	13.2
KQ2LU08-00	Φ8	24	32	14	24.5	15.6
KQ2LU10-00	Φ10	27	36.5	16	28	18.8
KQ2LU12-00	Φ12	29	40	18	30	21.3

**KQ2C Tube cap**



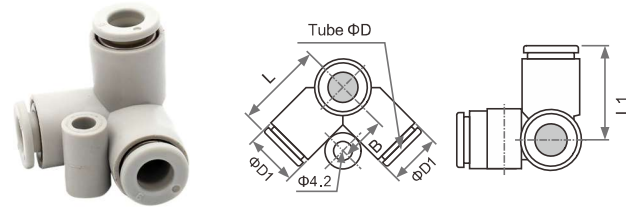
Model	ΦD	L	ΦD1	ΦD2
KQ2C04-00	Φ4	17	11	7.8
KQ2C06-00	Φ6	18.5	13.2	9.8
KQ2C08-00	Φ8	20.5	15.6	12
KQ2C10-00	Φ10	23	18.8	13.8
KQ2C12-00	Φ12	24	21.3	15.8

**KQ2UD Double male Y branch**



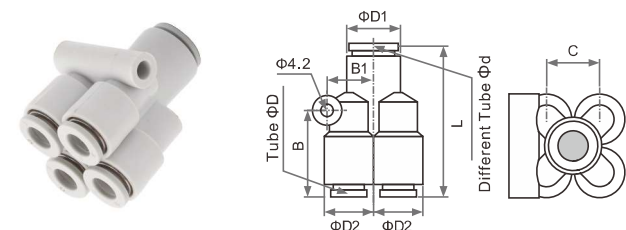
Model	ΦD	Thread	A	S	H	L	C	B	ΦD1	ΦD2
KQ2UD04-M5	Φ4	M5x0.8	4	3.3						
KQ2UD04-M6		M6x1.0	4.8	3.3						
KQ2UD04-01S		1/8"	7.5	4	31.5	10.6	17.8	13.2	11	
KQ2UD04-02S		1/4"	10.5	5.5						
KQ2UD06-M5	Φ6	M5x0.8	4	3.3						
KQ2UD06-M6		M6x1.0	4.8	3.3						
KQ2UD06-01S		1/8"	7.5	4	37.5	12.8	20.6	15.6	13.2	
KQ2UD06-02S		1/4"	10.5	5.5						

**KQ2D Delta union**



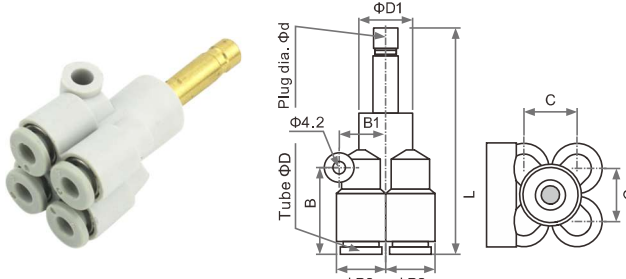
Model	ΦD	L	B	ΦD1
KQ2D04-00	Φ4	18.5	8.7	11
KQ2D06-00	Φ6	21	9.9	13.2
KQ2D08-00	Φ8	24	11.1	15.6
KQ2D10-00	Φ10	27	12.8	18.8
KQ2D12-00	Φ12	29	13.9	21.3

**KQ2UD Double Y branch**



Model	ΦD	Φd	L	C	B	B1	ΦD1	ΦD2
KQ2UD04-00	Φ4	Φ4	34.5	10.6	17.8	8.8	13.2	11
KQ2UD04-06	Φ4	Φ6	34.5	10.6	17.8	8.8	13.2	11
KQ2UD06-00	Φ6	Φ6	40	12.8	20.6	11.3	15.6	13.2
KQ2UD06-08	Φ6	Φ8	40	12.8	20.6	11.3	15.6	13.2

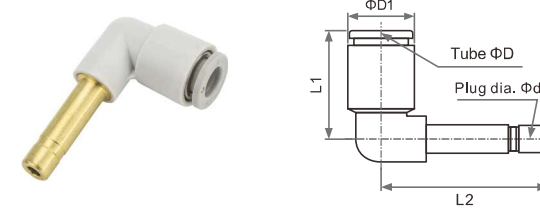
**KQ2XD Double plug-in Y branch**



Model	ΦD	Φd	L	C	B	B1	ΦD1	ΦD2
KQ2XD04-04	Φ4	Φ4	48.8					
KQ2XD04-06		Φ6	52.6	10.6	17.8	8.8	13.2	11
KQ2XD04-08		Φ	55.5					
KQ2XD06-06	Φ6	Φ6	58.3					
KQ2XD06-08		Φ8	61.2	12.8	20.6	11.3	15.6	13.2
KQ2XD06-10		Φ10	63.2					
KQ2XD06-12		Φ12	65.2					

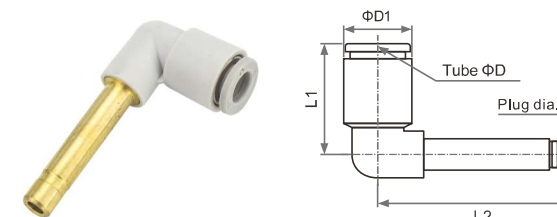
**KQ2 series**  
push-in tube fittings

**KQ2L Plug-in 90°elbow**



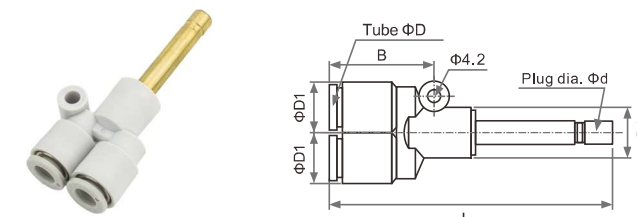
Model	ΦD	Φd	L1	L2	ΦD1
KQ2L04-99	Φ4	Φ4	18	25	11
KQ2L06-99	Φ6	Φ6	20	27.5	13.2
KQ2L08-99	Φ8	Φ8	23	31.5	15.6
KQ2L10-99	Φ10	Φ10	26.5	35.5	18.8
KQ2L12-99	Φ12	Φ12	28.5	37.5	21.3

**KQ2W Extended plug-in 90°elbow**



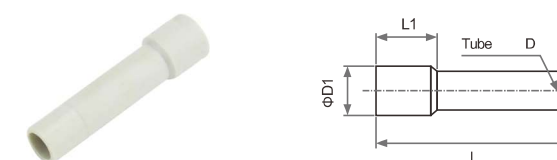
Model	ΦD	Φd	L1	L2	ΦD1
KQ2W04-99	Φ4	Φ4	18	37	11
KQ2W06-99	Φ6	Φ6	20	41.5	13.2
KQ2W08-99	Φ8	Φ8	23	48	15.6
KQ2W10-99	Φ10	Φ10	26.5	55	18.8
KQ2W12-99	Φ12	Φ12	28.5	59.5	21.3

**KQ2UW Extended plug-in Y branch**

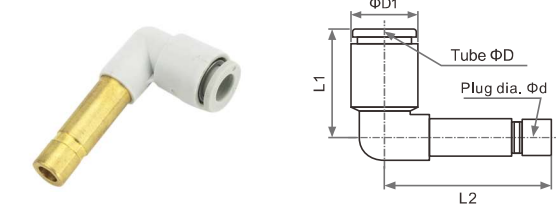


Model	ΦD	Φd	L	B	ΦD1
KQ2UW04-99	Φ4	Φ4	60.3	18	11
KQ2UW06-99	Φ6	Φ6	72.1	20	13.2
KQ2UW08-99	Φ8	Φ8	79	24.5	15.6
KQ2UW10-99	Φ10	Φ10	87.1	27.5	18.8
KQ2UW12-99	Φ12	Φ12	100.5	30	21.3

**KQ2P Plug**

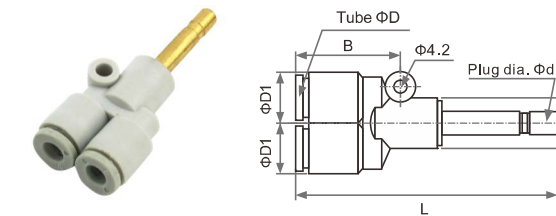


**KQ2L Reducing plug-in 90°elbow**



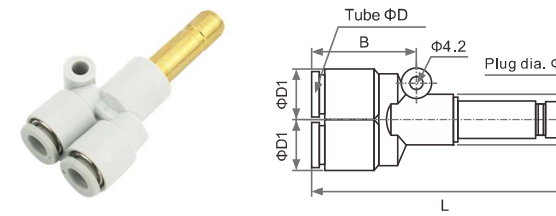
Model	ΦD	Φd	L1	L2	ΦD1
KQ2L04-06	Φ4	Φ6	18	26	11
KQ2L04-08		Φ8		35	
KQ2L06-08	Φ6	Φ8	20	30.5	13.2
KQ2L06-10		Φ10		38.5	
KQ2L08-10	Φ8	Φ10	23	33.5	15.6
KQ2L08-12		Φ12		40.5	
KQ2L10-12	Φ10	Φ12	26.5	42	18.8
KQ2L12-16	Φ12	Φ16	28.5	49.5	21.3

**KQ2U Plug-in Y branch**



Model	ΦD	Φd	L	B	ΦD1
KQ2U04-99	Φ4	Φ4	51.5	18	11
KQ2U06-99	Φ6	Φ6	55.5	20	13.2
KQ2U08-99	Φ8	Φ8	64.5	24.5	15.6
KQ2U10-99	Φ10	Φ10	71.5	27.5	18.8
KQ2U12-99	Φ12	Φ12	75.5	30	21.3

**KQ2X Reducing plug-in Y branch**



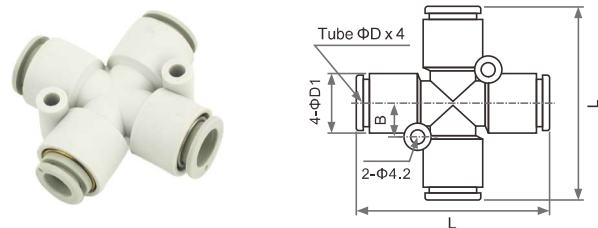
Model	ΦD	Φd	L	B	ΦD1
KQ2X04-06	Φ4	Φ6	51.5	18	11
KQ2X06-08	Φ6	Φ8	55.5	20	13.2
KQ2X08-10	Φ8	Φ10	64.5	24.5	15.6
KQ2X10-12	Φ10	Φ12	71.5	27.5	18.8

Model	ΦD	L	L1	ΦD1
KQ2P-04	Φ4	31.5		11
KQ2P-06	Φ6	35		13.2
KQ2P-08	Φ8	40	9.9	15.6
KQ2P-10	Φ10	42.6		18.8
KQ2P-12	Φ12	45.2		21.3

**KQ2 series**  
push-in tube fittings

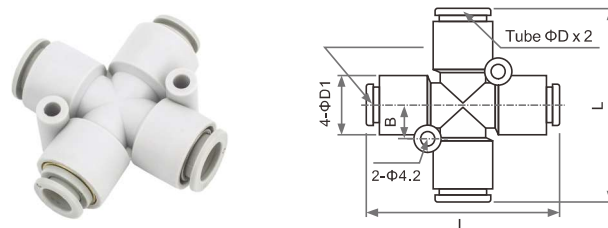
Available color for release button ● Available color for body ●

**KQ2TW Cross**



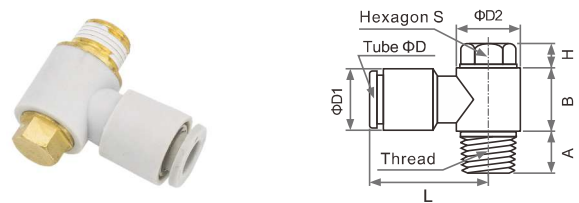
Model	ΦD	L	B	ΦD1
KQ2TW04-00	Φ4	36	8	11
KQ2TW06-00	Φ6	40	9	13.2
KQ2TW08-00	Φ8	46	10	15.6
KQ2TW10-00	Φ10	53	11.4	18.8
KQ2TW12-00	Φ12	57	12.4	21.3

**KQ2TY Reducing cross 2**



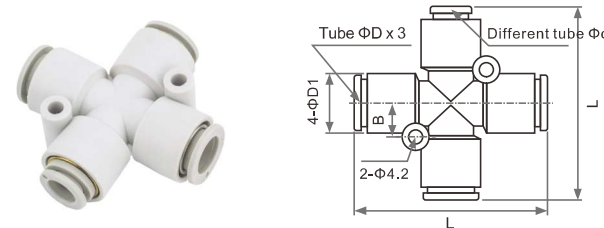
Model	ΦD	Φd	L	B	ΦD1
KQ2TY06-04	Φ6	Φ4	40	9	13.2
KQ2TY08-06	Φ8	Φ6	46	10	15.6
KQ2TY10-08	Φ10	Φ8	53	11.4	18.8
KQ2TY12-10	Φ12	Φ10	57	12.4	21.3

**KQ2V Universal male elbow**



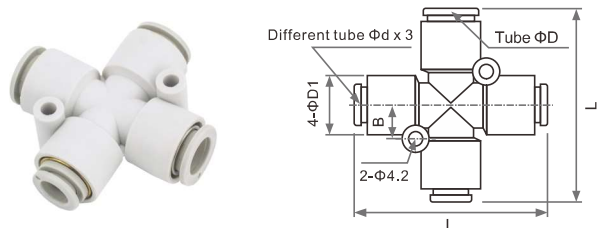
Model	ΦD	Thread	A	S	H	L	B	ΦD1	ΦD2	
KQ2V04-M5	Φ4	M5x0.8	4	12	4	22	13.4	11	13.5	
KQ2V04-M6		M6x1.0	4.8	12	4					
KQ2V04-01S		1/8"	7.5	8	4.8					
KQ2V04-02S	1/4"	10.5	10	5						
KQ2V06-M5	Φ6	M5x0.8	4	12	4	24	13.4	13.2	13.5	
KQ2V06-M6		M6x1.0	4.8	12	4					
KQ2V06-01S		1/8"	7.5	8	4.8					
KQ2V06-02S	1/4"	10.5	10	5						
KQ2V08-01S	Φ8	1/8"	7.5	8	4.8	28.5	16.2	15.6	17.6	
KQ2V08-02S		1/4"	10.5	12	5					
KQ2V08-03S		3/8"	11	12	6.7					
KQ2V10-01S	Φ10	1/8"	7.5	5.2	31	19.2	18.8	20.5		
KQ2V10-02S		1/4"	10.5	14						5.2
KQ2V10-03S		3/8"	11	5.7						
KQ2V12-03S	Φ12	3/8"	11	6.7	34	21.6	21.3	24.8		
KQ2V12-04S		1/2"	14.2	6.7						

**KQ2TX Reducing cross 1**



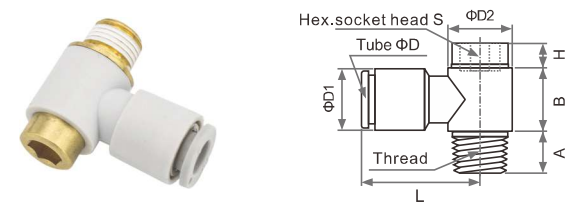
Model	ΦD	Φd	L	B	ΦD1
KQ2TX06-04	Φ6	Φ4	40	9	13.2
KQ2TX08-06	Φ8	Φ6	46	10	15.6
KQ2TX10-08	Φ10	Φ8	53	11.4	18.8
KQ2TX12-10	Φ12	Φ10	57	12.4	21.3

**KQ2TZ Reducing cross 3**



Model	ΦD	Φd	L	B	ΦD1
KQ2TZ06-04	Φ6	Φ4	40	9	13.2
KQ2TZ08-06	Φ8	Φ6	46	10	15.6
KQ2TZ10-08	Φ10	Φ8	53	11.4	18.8
KQ2TZ12-10	Φ12	Φ10	57	12.4	21.3

**KQ2VS Hex.socket head universal male elbow**

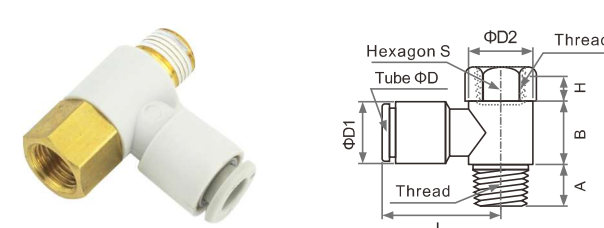


Model	ΦD	Thread	A	S	H	L	B	ΦD1	ΦD2	
KQ2VS04-M5	Φ4	M5x0.8	4	12	4	22	13.4	11	13.5	
KQ2VS04-M6		M6x1.0	4.8	12	4					
KQ2VS04-01S		1/8"	7.5	8	4.8					
KQ2VS04-02S	1/4"	10.5	10	5						
KQ2VS06-M5	Φ6	M5x0.8	4	12	4	24	13.4	13.2	13.5	
KQ2VS06-M6		M6x1.0	4.8	12	4					
KQ2VS06-01S		1/8"	7.5	8	4.8					
KQ2VS06-02S	1/4"	10.5	10	5						
KQ2VS08-01S	Φ8	1/8"	7.5	4.8	28.5	16.2	15.6	17.6		
KQ2VS08-02S		1/4"	10.5	8						5
KQ2VS08-03S		3/8"	11	6.7						
KQ2VS10-01S	Φ10	1/8"	7.5	5.2	31	19.2	18.8	20.5		
KQ2VS10-02S		1/4"	10.5	8						5.2
KQ2VS10-03S		3/8"	11	5.7						
KQ2VS12-03S	Φ12	3/8"	11	6.7	34	21.6	21.3	24.8		
KQ2VS12-04S		1/2"	14.2	6.7						

**KQ2 series**  
push-in tube fittings

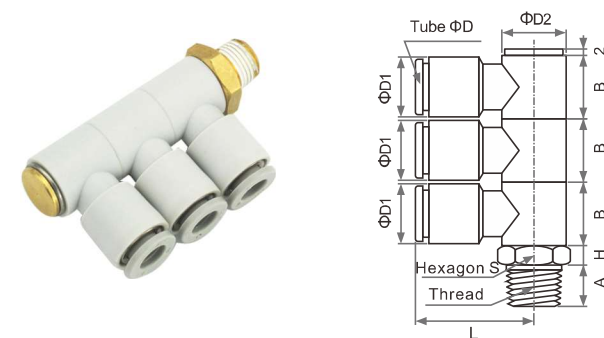
Available color for release button ● Available color for body ●

**KQ2VF Universal female elbow**



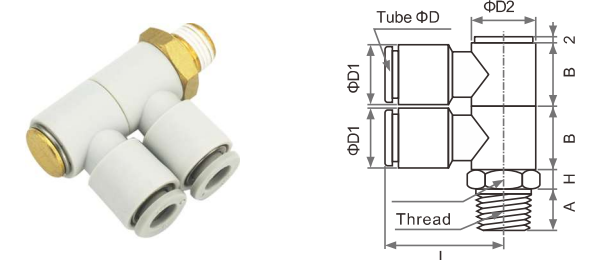
Model	ΦD	Thread	A	S	H	L	B	ΦD1	ΦD2	
KQ2VF04-M5	Φ4	M5x0.8	4	12	4	22	13.4	11	13.5	
KQ2VF04-M6		M6x1.0	4.8	12	4					
KQ2VF04-01S		1/8"	7.5	8	4.8					
KQ2VF06-M5	Φ6	M5x0.8	4	12	4	24	13.4	13.2	13.5	
KQ2VF06-M6		M6x1.0	4.8	12	4					
KQ2VF06-01S		1/8"	7.5	8	4.8					
KQ2VF08-01S	Φ8	1/8"	7.5	4.8	28.5	16.2	15.6	17.6		
KQ2VF08-02S		1/4"	10.5	8						5.5
KQ2VF10-01S		1/8"	7.5	17						10.5
KQ2VF10-02S	1/4"	10.5	19	11.8						
KQ2VF12-02S	Φ12	1/4"	10.5	22	11.8	34	21.6	21.3	24.8	
KQ2VF12-03S		3/4"	11	12.6						

**KQ2VT Triple universal male elbow**



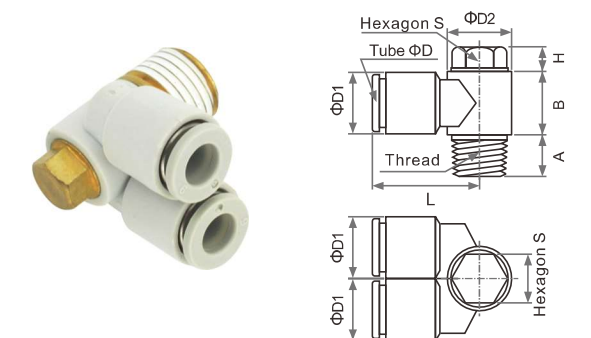
Model	ΦD	Thread	A	S	H	L	B	ΦD1	ΦD2	
KQ2VT04-01S	Φ4	1/8"	7.5	14	4	22	13.4	11	13.5	
KQ2VT04-02S		1/4"	10.5	14	5.5					
KQ2VT04-03S		3/8"	11	17	6					
KQ2VT06-01S	Φ6	1/8"	7.5	14	4	24	13.4	13.2	13.5	
KQ2VT06-02S		1/4"	10.5	14	5.5					
KQ2VT06-03S		3/8"	11	17	6					
KQ2VT08-01S	Φ8	1/8"	7.5	4	28.5	16.2	15.6	17.6		
KQ2VT08-02S		1/4"	10.5	5.5						
KQ2VT08-03S		3/8"	11	19						6
KQ2VT08-04S	1/2"	14.5	7							
KQ2VT10-02S	Φ10	1/4"	10.5	21	5.5	31	19.2	18.8	20.5	
KQ2VT10-03S		3/8"	11	21	6					
KQ2VT10-04S		1/2"	14.5	22	7					
KQ2VT12-02S	Φ12	1/4"	10.5	5.5	34	21.6	21.3	24.8		
KQ2VT12-03S		3/8"	11	27						6
KQ2VT12-04S		1/2"	14.5	7						

**KQ2VD Double universal male elbow**



Model	ΦD	Thread	A	S	H	L	B	ΦD1	ΦD2	
KQ2VD04-01S	Φ4	1/8"	7.5	14	4	22	13.4	11	13.5	
KQ2VD04-02S		1/4"	10.5	14	5.5					
KQ2VD04-03S		3/8"	11	17	6					
KQ2VD06-01S	Φ6	1/8"	7.5	14	4	24	13.4	13.2	13.5	
KQ2VD06-02S		1/4"	10.5	14	5.5					
KQ2VD06-03S		3/8"	11	17	6					
KQ2VD08-01S	Φ8	1/8"	7.5	4	28.5	16.2	15.6	17.6		
KQ2VD08-02S		1/4"	10.5	19						5.5
KQ2VD08-03S		3/8"	11	19						6
KQ2VD08-04S	1/2"	14.5	7							
KQ2VD10-02S	Φ10	1/4"	10.5	21	5.5	31	19.2	18.8	20.5	
KQ2VD10-03S		3/8"	11	21	6					
KQ2VD10-04S		1/2"	14.5	22	7					
KQ2VD12-02S	Φ12	1/4"	10.5	5.5	34	21.6	21.3	24.8		
KQ2VD12-03S		3/8"	11	27						6
KQ2VD12-04S		1/2"	14.5	7						

**KQ2Z Branch universal male elbow**



Model	ΦD	Thread	A	S	H	L	B	ΦD1	ΦD2	
KQ2Z04-M5	Φ4	M5x0.8	4	12	4	20.5	13.4	11	13.5	
KQ2Z04-M6		M6x1.0	4.8	12	4					
KQ2Z04-01S		1/8"	7.5	8	4.8					
KQ2Z04-02S	1/4"	10.5	10	5						
KQ2Z06-M5	Φ6	M5x0.8	4	12	4	22	13.4	13.2	13.5	
KQ2Z06-M6		M6x1.0	4.8	12	4					
KQ2Z06-01S		1/8"	7.5	8	4.8					
KQ2Z06-02S	1/4"	10.5	10	5						
KQ2Z08-01S	Φ8	1/8"	7.5	8	4.8	24.5	16.2	15.6	17.6	
KQ2Z08-02S		1/4"	10.5	12	5					
KQ2Z08-03S		3/8"	11	12	6.7					
KQ2Z10-01S	Φ10	1/8"	7.5	5.2	37	19.2	18.8	20.5		
KQ2Z10-02S		1/4"	10.5	14						5.2
KQ2Z10-03S		3/8"	11	5.7						
KQ2Z12-03S	Φ12	3/8"	11	6.7	31	21.6	21.3	24.8		
KQ2Z12-04S		1/2"	14.2	6.7						



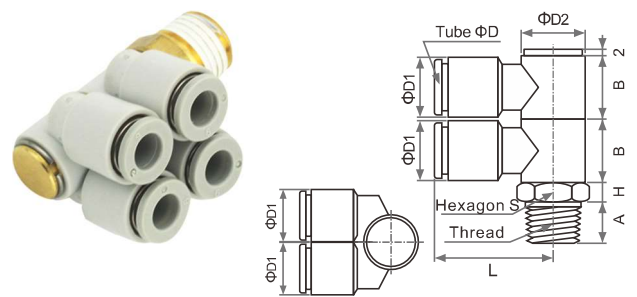
**KQ2 series**  
push-in tube fittings

**KQ2ZS Hex.socket head branch universal male elbow**



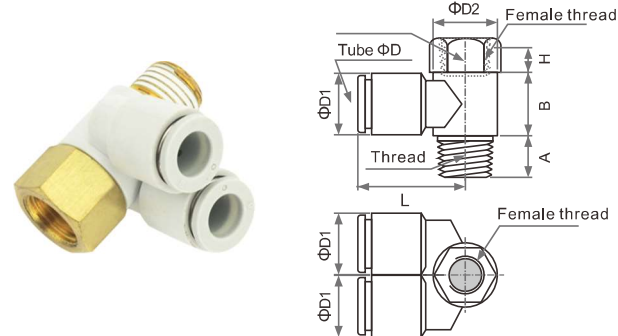
Model	ΦD	Thread	A	S	H	L	B	ΦD1	ΦD2
KQ2ZS04-M5	Φ4	M5x0.8	4	4	4	20.5	13.4	11	13.5
KQ2ZS04-M6		M6x1.0	4.8	6	4				
KQ2ZS04-01S		1/8"	7.5	4.8					
KQ2ZS04-02S		1/4"	10.5	5					
KQ2ZS06-M5	Φ6	M5x0.8	4	4	4	22	13.4	13.2	13.5
KQ2ZS06-M6		M6x1.0	4.8	6	4				
KQ2ZS06-01S		1/8"	7.5	4.8					
KQ2ZS06-02S		1/4"	10.5	5					
KQ2ZS08-01S	Φ8	1/8"	7.5	4.8	4	24.5	16.2	15.6	17.6
KQ2ZS08-02S		1/4"	10.5	8	5				
KQ2ZS08-03S		3/8"	11	6.7					
KQ2ZS10-01S	Φ10	1/8"	7.5	5.2	4	27	19.2	18.8	20.5
KQ2ZS10-02S		1/4"	10.5	8	5.2				
KQ2ZS10-03S		3/8"	11	5.7					
KQ2ZS12-03S	Φ12	3/8"	11	6.7	4	31.5	21.6	21.3	24.8
KQ2ZS12-04S		1/2"	14.2	6.7					

**KQ2ZD Double branch universal male elbow**



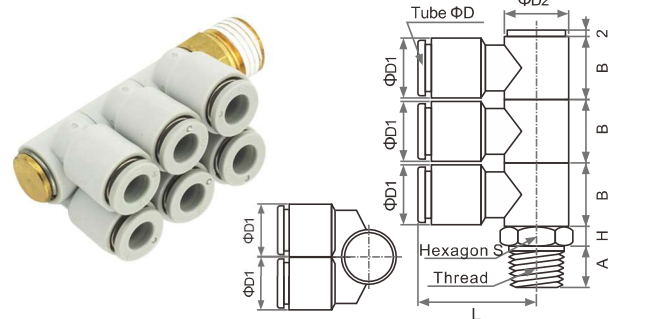
Model	ΦD	Thread	A	S	H	L	B	ΦD1	ΦD2
KQ2ZD04-01S	Φ4	1/8"	7.5	14	4	20.5	13.4	11	13.5
KQ2ZD04-02S		1/4"	10.5	14	5.5				
KQ2ZD04-03S		3/8"	11	17	6				
KQ2ZD06-01S	Φ6	1/8"	7.5	14	4	22	13.4	13.2	13.5
KQ2ZD06-02S		1/4"	10.5	14	5.5				
KQ2ZD06-03S		3/8"	11	17	6				
KQ2ZD08-01S	Φ8	1/8"	7.5	4	4	24.5	16.2	15.6	17.6
KQ2ZD08-02S		1/4"	10.5	19	5.5				
KQ2ZD08-03S		3/8"	11	6					
KQ2ZD08-04S		1/2"	14.5	7					
KQ2ZD10-02S	Φ10	1/4"	10.5	21	5.5	27	19.2	18.8	20.5
KQ2ZD10-03S		3/8"	11	21	6				
KQ2ZD10-04S		1/2"	14.5	22	7				
KQ2ZD12-02S	Φ12	1/4"	10.5	5.5	4	31.5	21.6	21.3	24.8
KQ2ZD12-03S		3/8"	11	27	6				
KQ2ZD12-04S		1/2"	14.5	7					

**KQ2ZF Branch universal female elbow**



Model	ΦD	Thread	A	S	H	L	B	ΦD1	ΦD2
KQ2ZF04-M5	Φ4	M5x0.8	4	4	4	22	13.4	11	13.5
KQ2ZF04-M6		M6x1.0	4.8	12	4				
KQ2ZF04-01S		1/8"	7.5	10.5					
KQ2ZF06-M5	Φ6	M5x0.8	4	4	4	24	13.4	13.2	13.5
KQ2ZF06-M6		M6x1.0	4.8	12	4				
KQ2ZF06-01S		1/8"	7.5	10.5					
KQ2ZF08-01S	Φ8	1/8"	7.5	8.7	4	28.5	16.2	15.6	17.6
KQ2ZF08-02S		1/4"	10.5	11.8					
KQ2ZF10-01S	Φ10	1/8"	7.5	17	10.5	31	19.2	18.8	20.5
KQ2ZF10-02S		1/4"	10.5	19	11.8				
KQ2ZF12-02S	Φ12	1/4"	10.5	11.8	4	34	21.6	21.3	24.8
KQ2ZF12-03S		3/4"	11	12.6					

**KQ2ZT Triple branch universal male elbow**



Model	ΦD	Thread	A	S	H	L	B	ΦD1	ΦD2
KQ2ZT04-01S	Φ4	1/8"	7.5	14	4	20.5	13.4	11	13.5
KQ2ZT04-02S		1/4"	10.5	14	5.5				
KQ2ZT04-03S		3/8"	11	17	6				
KQ2ZT06-01S	Φ6	1/8"	7.5	14	4	22	13.4	13.2	13.5
KQ2ZT06-02S		1/4"	10.5	14	5.5				
KQ2ZT06-03S		3/8"	11	17	6				
KQ2ZT08-01S	Φ8	1/8"	7.5	4	4	24.5	16.2	15.6	17.6
KQ2ZT08-02S		1/4"	10.5	19	5.5				
KQ2ZT08-03S		3/8"	11	6					
KQ2ZT08-04S		1/2"	14.5	7					
KQ2ZT10-02S	Φ10	1/4"	10.5	21	5.5	27	19.2	18.8	20.5
KQ2ZT10-03S		3/8"	11	21	6				
KQ2ZT10-04S		1/2"	14.5	22	7				
KQ2ZT12-02S	Φ12	1/4"	10.5	5.5	4	31.5	21.6	21.3	24.8
KQ2ZT12-03S		3/8"	11	27	6				
KQ2ZT12-04S		1/2"	14.5	7					

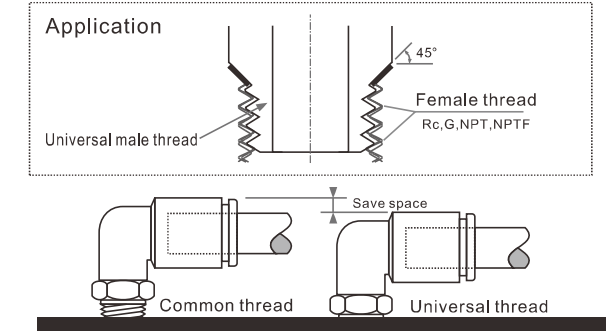
**KQ-U series Universal thread fitting**

**Characteristics**

1. Can be suitable for NPT,PT,PF and BSP thread
2. Basic material Brass
3. Max.working pressure 1.0MPa Vacuum:below 100kPa
4. Applicable tubing: Nylon tube, PU tube
5. Alternative X2-Nickel plated surface treatment,without copper ions (e.g. KQL04-U02-X2)

**Thread height comparison table:**

Thread size	1/8"	1/4"	3/8"	1/2"
Height of R thread	7.5	10.5	11	14.2
Height of Universal thread	6	6	6	6



**Model & Specification**

**KQ2H Male straight**

Tube mm	Φ4	Φ6	Φ8	Φ10	Φ12	Φ16
Universal thread	1/8"	KQ2H04-U01	KQ2H06-U01	KQ2H08-U01	KQ2H10-U01	KQ2H12-U01
	1/4"	KQ2H04-U02	KQ2H06-U02	KQ2H08-U02	KQ2H10-U02	KQ2H12-U02
	3/8"		KQ2H06-U03	KQ2H08-U03	KQ2H10-U03	KQ2H12-U03
	1/2"			KQ2H08-U04	KQ2H10-U04	KQ2H12-U04

**KQ2L Male 90°elbow**

Tube mm	Φ4	Φ6	Φ8	Φ10	Φ12	Φ16
Universal thread	1/8"	KQ2L04-U01	KQ2L06-U01	KQ2L08-U01	KQ2L10-U01	KQ2L12-U01
	1/4"	KQ2L04-U02	KQ2L06-U02	KQ2L08-U02	KQ2L10-U02	KQ2L12-U02
	3/8"		KQ2L06-U03	KQ2L08-U03	KQ2L10-U03	KQ2L12-U03
	1/2"			KQ2L08-U04	KQ2L10-U04	KQ2L12-U04

**KQ2S Hex.socket head straight**

Tube mm	Φ4	Φ6	Φ8	Φ10	Φ12	Φ16
Universal thread	1/8"	KQ2S04-U01	KQ2S06-U01	KQ2S08-U01	KQ2S10-U01	KQ2S12-U01
	1/4"	KQ2S04-U02	KQ2S06-U02	KQ2S08-U02	KQ2S10-U02	KQ2S12-U02
	3/8"		KQ2S06-U03	KQ2S08-U03	KQ2S10-U03	KQ2S12-U03
	1/2"			KQ2S08-U04	KQ2S10-U04	KQ2S12-U04

**KQ2T Male Tee branch**

Tube mm	Φ4	Φ6	Φ8	Φ10	Φ12	Φ16
Universal thread	1/8"	KQ2T04-U01	KQ2T06-U01	KQ2T08-U01	KQ2T10-U01	KQ2T12-U01
	1/4"	KQ2T04-U02	KQ2T06-U02	KQ2T08-U02	KQ2T10-U02	KQ2T12-U02
	3/8"		KQ2T06-U03	KQ2T08-U03	KQ2T10-U03	KQ2T12-U03
	1/2"			KQ2T08-U04	KQ2T10-U04	KQ2T12-U04

**KQ2U Male Y branch**

Tube mm	Φ4	Φ6	Φ8	Φ10	Φ12	Φ16
Universal thread	1/8"	KQ2U04-U01	KQ2U06-U01	KQ2U08-U01	KQ2U10-U01	KQ2U12-U01
	1/4"	KQ2U04-U02	KQ2U06-U02	KQ2U08-U02	KQ2U10-U02	KQ2U12-U02
	3/8"		KQ2U06-U03	KQ2U08-U03	KQ2U10-U03	KQ2U12-U03
	1/2"			KQ2U08-U04	KQ2U10-U04	KQ2U12-U04

**KQ2Y Male Tee branch**

Tube mm	Φ4	Φ6	Φ8	Φ10	Φ12	Φ16
Universal thread	1/8"	KQ2Y04-U01	KQ2Y06-U01	KQ2Y08-U01	KQ2Y10-U01	KQ2Y12-U01
	1/4"	KQ2Y04-U02	KQ2Y06-U02	KQ2Y08-U02	KQ2Y10-U02	KQ2Y12-U02
	3/8"		KQ2Y06-U03	KQ2Y08-U03	KQ2Y10-U03	KQ2Y12-U03
	1/2"			KQ2Y08-U04	KQ2Y10-U04	KQ2Y12-U04

**AS Speed controller**

Tube mm	Φ4	Φ6	Φ8	Φ10	Φ12
Universal thread	1/8"	AS2001F-U01-04	AS2001F-U01-06	AS2001F-U01-08	AS2001F-U01-10
	1/4"	AS2001F-U02-04	AS2001F-U02-06	AS2001F-U02-08	AS2001F-U02-10
	3/8"		AS3001F-U03-06	AS3001F-U03-08	AS3001F-U03-10
	1/2"				AS4001F-U04-10



**KQ series** black push-in tube fittings

**Characteristics**

- 1.Can be used for vacuum system
- 2.Black plastic material with anti-pollution
- 3.All standard thread with sealant
- 4.Applicable for
  - Machining workshop
  - The environment of each air piping system needs to be marked separately.

**Available model**

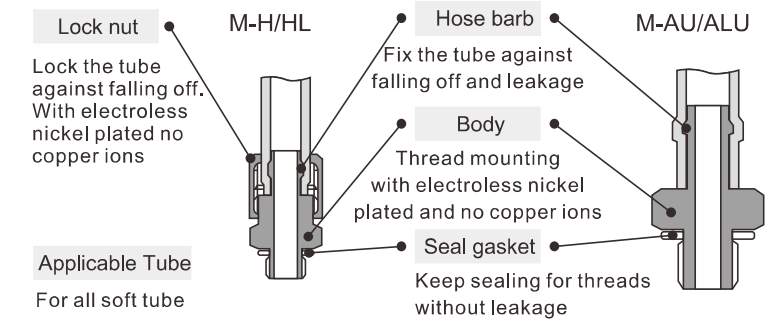
Male straight : KQH	Bulkhead elbow : KQLE	Universal male elbow : KQV	Delta union : KQD	Mini male straight : KJH
Straight union : KQH	Female elbow : KQLF	Universal female elbow : KQVF	Male delta union : KQD	Mini hex.socket head male straight : KJS
Reducing straight : KQH	Plug-in reducing elbow : KQL	Hex.socket head universal male elbow : KQVS	Branch union elbow : KQLU	Mini male elbow : KJL
Male elbow : KQL	Plug-in elbow : KQL	Double universal male elbow : KQVD	Male branch union elbow : KQLU	Mini female straight : KJF
Elbow union : KQL	Extended male elbow : KQW	Triple universal male elbow : KQVT	Male Y branch : KQU	Mini elbow : KJL
Hex.socket head male straight : KQS	Extended plug-in elbow : KQW	Branch universal male elbow : KQZ	Y branch : KQU	Mini straight : KJH
Bulkhead straight : KQE	Y branch KQU	Hex.socket head branch universal male elbow : KQZS	Reducing Y branch : KQU	Mini reducing straight : KJH
Female bulkhead straight : KQE	Extended plug-in Y branch : KQUW	Branch universal female elbow : KQZF	Male run Tee: KQY	Mini bulkhead straight : KJE
Female straight : KQF	Reducing plug-in Y branch : KQX	Double branch universal male elbow : KQZD	Reducing Tee branch : KQT	Mini Y branch : KJU
Tube cap : KQC	Double Y branch KQUD	Triple branch universal male elbow : KQZT	Cross fitting : KQTW	Mini delta union : KJT
Plug : KQP	Double male Y branch : KQUD	Tee branch : KQT	Reducing cross 1 : KQTX	Speed controller : AS**01F
Plug-in reducing : KQR	Double plug-in Y branch : KQXD	Male Tee branch : KQT	Reducing cross 2 : KQTY	Speed controller : AS**1F



**M series** micro fittings

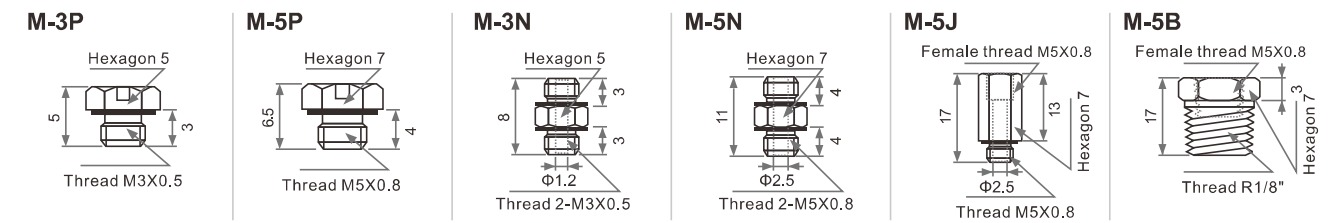


**Product structure**



Applicable Tube(O.D.)X(I.D.)  
 3:Φ3.18XΦ2.18、4:Φ4XΦ2.5、6:Φ6XΦ4  
 Connecting thread:M3X0.5、M5X0.8、R1/8  
 Working pressure range: 0~1.0MPa  
 Material:Brass with electroless nickel plated,so no copper ions.

**Dimension(mm)**



M-AU	Thread	Model	Tube	A	B	ΦC	Thread
M-3AU	M3X0.5	M-3AU-3	Φ3.18	9.5	4.5	1.2	M3X0.5
M-3AU	M3X0.5	M-3AU-4	Φ4	10	5	1.4	M3X0.5
M-5AU	M5X0.8	M-5AU-3	Φ3.18	11.5	4.5	1.6	M5X0.8
M-5AU	M5X0.8	M-5AU-4	Φ4	12	5	1.8	M5X0.8
M-5AU	M5X0.8	M-5AU-6	Φ6	14	7	2.5	M5X0.8

M-ALU	Model	Tube	A1	A2	B	ΦC	Thread
M-3ALU	M-3ALU-3	Φ3.18	9.5	9.5	4.5	1.2	M3X0.5
M-3ALU	M-3ALU-4	Φ4	9.5	10	5	1.6	M3X0.5
M-5ALU	M-5ALU-3	Φ3.18	12.5	12.5	4.5	1.6	M5X0.8
M-5ALU	M-5ALU-4	Φ4	12.5	13	5	1.8	M5X0.8
M-5ALU	M-5ALU-6	Φ6	12.5	15	7	2.5	M5X0.8

M-H	Model	Tube	A	B	ΦC	ΦE	F	S	Thread
M-5H	M-5H-4	Φ4	15.5	8.5	1.8	6.5	7	7	M5X0.8
M-5H	M-5H-6	Φ6	16.5	9.5	2.5	8.5	8	8	M5X0.8
M-01H	M-01H-4	Φ4	19.5	8.5	1.8	6.7	7	10	1/8"
M-01H	M-01H-6	Φ6	20.5	9.5	3	8.5	8	10	1/8"

M-HL	Model	Tube	A1	A2	B	ΦC	ΦE	F	Thread
M-5HL	M-5HL-4	Φ4	12.5	16.5	8.5	1.8	6.5	7	M5X0.8
M-5HL	M-5HL-6	Φ6	12.5	17.5	9.5	2.5	8.5	8	M5X0.8

**KG series** corrosion-resistant fittings

**Characteristics**

- 1.Can be used for vacuum system
- 2.Use SUS303 stainless steel instead of traditional brass
- 3.Apply to :  
Food machinery equipment, where may touch scouring water or saline water.  
No copper equipment, e.g.: CRT production line.  
Clean room
- 4.White body is easy to be distinguished.
- 5.All standard threads are with sealant

**KG2H Male straight**

Available color for cassette ● ● ● Refer to KQ2H for the dimension



Connecting Thread	Applicable Tube(mm)					
	Φ4	Φ6	Φ8	Φ10	Φ12	Φ16
M3x0.5	KG2H04-M3					
M5x0.8	KG2H04-M5	KG2H06-M5				
M6x1.0	KG2H04-M6	KG2H06-M6				
1/8"	KG2H04-01S	KG2H06-01S	KG2H08-01S	KG2H10-01S	KG2H12-01S	
1/4"	KG2H04-02S	KG2H06-02S	KG2H08-02S	KG2H10-02S	KG2H12-02S	
3/8"		KG2H06-03S	KG2H08-03S	KG2H10-03S	KG2H12-03S	KG2H16-03S
1/2"			KG2H08-04S	KG2H10-04S	KG2H12-04S	KG2H16-04S

**KG2S Hexagon socket head straight**

Available color for cassette ● ● ● Refer to KQ2S for the dimension



Connecting Thread	Applicable Tube(mm)					
	Φ4	Φ6	Φ8	Φ10	Φ12	Φ16
M3x0.5	KG2S04-M3					
M5x0.8	KG2S04-M5	KG2S06-M5				
M6x1.0	KG2S04-M6	KG2S06-M6				
1/8"	KG2S04-01S	KG2S06-01S	KG2S08-01S	KG2S10-01S	KG2S12-01S	
1/4"	KG2S04-02S	KG2S06-02S	KG2S08-02S	KG2S10-02S	KG2S12-02S	
3/8"		KG2S06-03S	KG2S08-03S	KG2S10-03S	KG2S12-03S	KG2S16-03S
1/2"			KG2S08-04S	KG2S10-04S	KG2S12-04S	KG2S16-04S

**KG2L Male elbow**

Available color for cassette ● ● ● Refer to KQ2L for the dimension

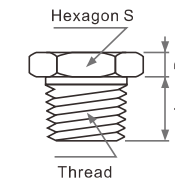


Connecting Thread	Applicable Tube(mm)					
	Φ4	Φ6	Φ8	Φ10	Φ12	Φ16
M3x0.5	KG2L04-M3					
M5x0.8	KG2L04-M5	KG2L06-M5				
M6x1.0	KG2L04-M6	KG2L06-M6				
1/8"	KG2L04-01S	KG2L06-01S	KG2L08-01S	KG2L10-01S	KG2L12-01S	
1/4"	KG2L04-02S	KG2L06-02S	KG2L08-02S	KG2L10-02S	KG2L12-02S	
3/8"		KG2L06-03S	KG2L08-03S	KG2L10-03S	KG2L12-03S	KG2L16-03S
1/2"			KG2L08-04S	KG2L10-04S	KG2L12-04S	KG2L16-04S

**Full copper series** (thickened) shoe machine

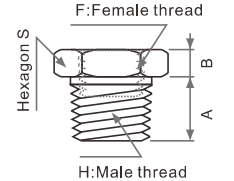
\*Available for customized products

**DT series plug**



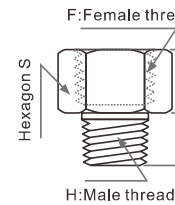
Model	Thread	A	B	S
DT-5	M5	4.5	3.5	8
DT-01S	1/8"	8	3	12
DT-02S	1/4"	12	3	14
DT-03S	3/8"	12	3	17
DT-04S	1/2"	14	4	22
DT-06S	3/4"	16	4	27

**H □ -F □ Reducer adapter 1**



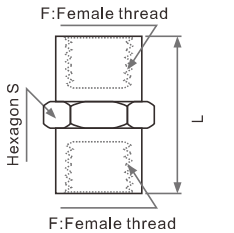
Model	H: Thread	F:Thread	A	B	S
H01S-F5	1/8"	M5	7	4	12
H02S-F01	1/4"	1/8"	10	5	17
H03S-F01	3/8"	1/8"	10	5	19
H03S-F02	3/8"	1/4"	10	5	19
H04S-F01	1/2"	1/8"	12	7	22
H04S-F02	1/2"	1/2"	12	7	22
H04S-F03	1/2"	3/4"	12	7	22

**H □ -F □ Reducer adapter 2**



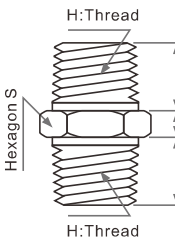
Model	H: Thread	F:Thread	A	B	S
H5-01	M5	1/8"	5	10	12
H01S-F02	1/8"	1/4"	7	13	17
H02S-F03	1/4"	3/8"	9	15	19
H03S-F04	3/8"	1/2"	11	15	24
H04S-F06	1/2"	3/4"	12	16	32

**F □ -F □ Female socket**



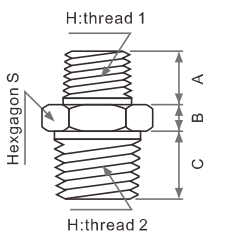
Model	H: Thread	L	S
F5-F5	M5	11	8
F01-F01	1/8"	15	14
F02-F02	1/4"	22	17
F03-F03	3/8"	24	22
F04-F04	1/2"	30	26

**H □ -H □ Double male nipple**



Model	H:Thread	A	B	S
H5-H5	M5	5	4	8
H01-H01S	1/8"	7	5	12
H02-H02S	1/4"	10	5	14
H03-H03S	3/8"	10	6	19
H04-H04S	1/2"	12	7	22
H06-H06S	1/2"	15	8	27

**H □ -H □ Reducing male nipple**



Model	H:Thread 1	H:Thread 2	A	B	C	S
H5-H01S	M5	1/8"	5	5	7	12
H01-H02S	1/8"	1/4"	7	5	10	14
H01-H03S	1/8"	3/8"	7	6	10	19
H02-H03S	1/4"	3/8"	10	6	10	19
H02-H04S	1/4"	1/2"	10	7	12	22
H03-H04S	3/8"	1/2"	12	7	12	22
H04-H06S	1/2"	3/4"	15	8	15	27